

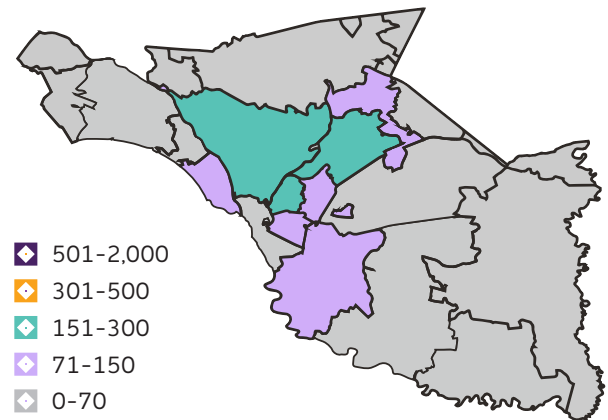
ALZHEIMER'S DISEASE & RELATED DEMENTIAS IN RICHLAND COUNTY, SC

ACCORDING TO THE SOUTH CAROLINA ALZHEIMER'S DISEASE REGISTRY:

- 5,969 individuals in Richland County were living with Alzheimer's Disease or Related Dementias (ADRD).
- Richland County has seen a 106% increase in documented cases since 2000.*
- Statewide, 122,699 South Carolinians were living with ADRD.

*This fact sheet reflects data from 2021, the most current year that complete data is available through the South Carolina Alzheimer's Disease Registry.

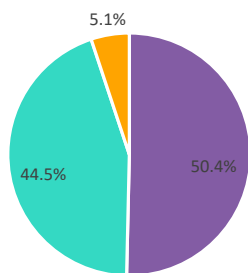
COUNTY MAP: CASES BY ZIP CODE†



†Values above reflect cases in an entire ZIP Code. Since some ZIP Codes cross county boundaries, only a portion of cases from shared ZIP Codes are included in the total cases for the county.

COUNTY CASES BY RACE

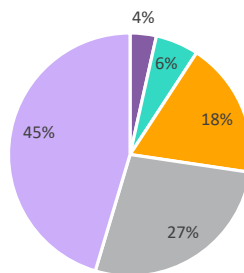
African Americans were 12% more likely to have ADRD than their non-Hispanic white counterparts.**



†Includes Asian, American Indian, Hispanic, and Unknown

COUNTY CASES BY AGE

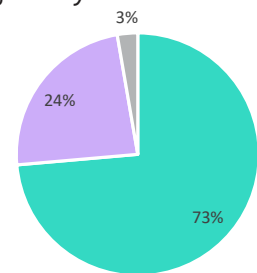
While most individuals with ADRD were 65 or older, 9.2% of county cases were under the age of 65.



Legend: <65 (4%), 65-74 (18%), 75-84 (27%), >85 (45%)

PLACE OF RESIDENCE

At time of diagnosis, most county residents lived in a community setting§ rather than in a skilled nursing facility.



§Community Settings may include Assisted Living environments.

**Statewide, African Americans in South Carolina were an average of 35% more likely to have ADRD than their non-Hispanic white counterparts.

Questions? Contact Taylor Wilson, Director of Government Affairs, Alzheimer's Association: twilson@alz.org or 803-315-0569.