

Dear Friend,

Most people think Alzheimer's is simple memory loss, when it is a degenerative disease that kills brain cells and eventually the person. It is the 7th leading cause of death in the United States. With no effective prevention or treatment methods, Alzheimer's disease has the power to bankrupt families, communities and our health care system.

Here's what you can do. Learn about Alzheimer's disease – its warning signs, who are at risk and what treatments are available. Connect with your local chapter... get involved.

[Click here](#) to Forward to a Friend.

Thank You,
Michelle | mchippas@alz.org



alzheimer's association

DONATE NOW

Central Ohio Chapter

www.alz.org/centralohio

Back by demand... **Dancing with the Stars Fall Gala**

Friday, October 9, 2009
7:00pm



The Renaissance Hotel
50 N. Third Street
Columbus, OH 43215

Presenting Sponsor:
OhioHealth

Tickets are available for \$250 per guest. To view individual ticket information please [click here](#).

For additional information, please contact Suzy Rudolph at (614) 442-2015 or srudolph@alz.org.

View the Live Auction item descriptions in preparation for bidding. [Live Auction descriptions](#) (PDF).

[Learn More >](#)

Volunteers Needed

The Alzheimer's Association Central Ohio Chapter has teamed up with The Ohio State University to conduct a **Study of the Diagnosis and Support for Memory Disorders**.



The purpose of this study is to examine the experiences of family caregivers during and following the diagnosis of a memory disorder. This information will help to improve the way in which medical professionals communicate with families.

To volunteer for this study, contact the researchers at The Ohio State University (614) 247-8963 or email Gibson.422@buckeyemail.osu.edu

Delaware County Memory Walk



Sunday, November 1, 2009
Polaris Fashion Place
Columbus, OH

Registration online:
memorywalk09.kintera.org/delaware
or call **1.800.272.3900**

Memory Walk is not just an event, it's an experience. Memory Walk is our way to engage people in the fight for their own history.

[Read more >](#)

Find us on Facebook



September 21st is World Alzheimer's Day, when Alzheimer organizations around the world work together to raise awareness of the disease.

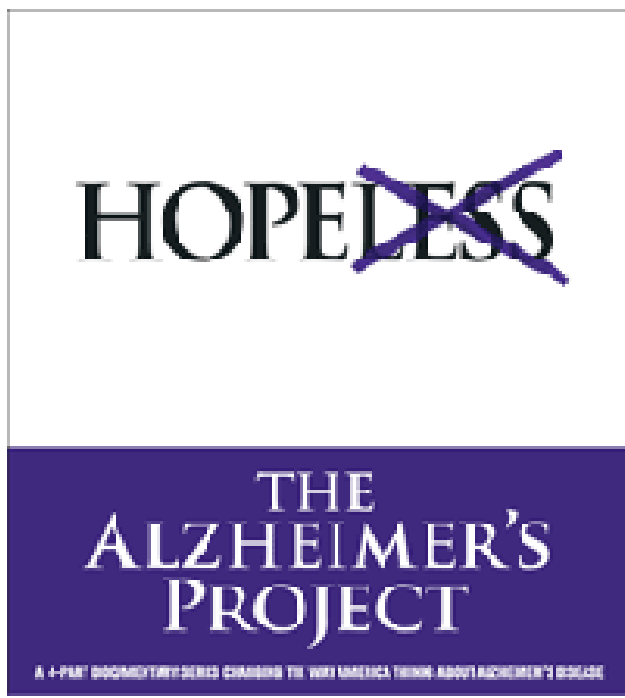
We invite you to join the Central Ohio Chapter for a viewing of HBO's "The Alzheimer's Project- Momentum in Science, Part 2" followed by a panel discussion

When: **September 21st, 2009**
Where: **The Siegel Center**
5975 East Broad St. Mt. Carmel
East Campus
Registration: **5:30 p.m.**
Program: **6 p.m. - 8 p.m.**

Experts from The Ohio State University include:

- Dr. Douglas Scharre of the Memory Disorders Clinic
- Dr. Jeffrey Kuret Molecular and Biochemistry Professor
- Dr. Michelle Bourgeois Speech and Hearing Science Professor

For More Information or To Register: [click here](#) or call 614-457-6003.



Symptoms of Alzheimer's May Come In Your 50s

Gene Study Shows Earlier Signs of Memory Loss, Hints at Earlier Intervention

By JOSEPH BROWNSTEIN
ABC News Medical Unit
July 16, 2009

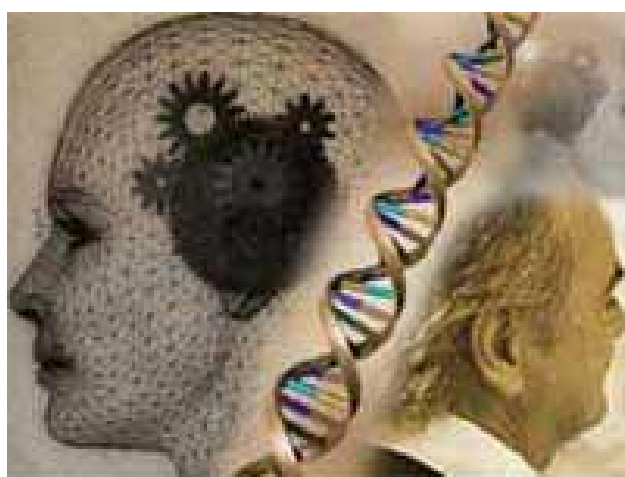


Photo Credit: ABC NEWS

For people with a common genetic variation, researchers have discovered signs of the possible onset of Alzheimer's before a patient would be clinically diagnosed by a doctor.

[Read More >](#)

Turn Experience with Alzheimer's Into Action

- Learn the 10 Warning Signs | [more >](#)
- Join a Support Group | [more >](#)
- Volunteer. Get engaged | [more >](#)
- Donate | [more >](#)

The Alzheimer's Association is the leading voluntary health organization in Alzheimer care, support and research. You are not alone in your struggles with Alzheimer's and related dementia diseases. Help is available 24/7/365 by calling 1.800.272.3900 and by visiting www.alz.org/centralohio.

This e-mail has been sent to you because our records indicate that you have elected to receive e-mail updates. If you no longer wish to receive e-mails regarding Alzheimer's Associations, please [click here](#).

Alzheimer's Association Central Ohio Chapter • 3380 Tremont Road • Columbus, Ohio 43221
614.457.6003 • 1.800.272.3900 • www.alz.org/centralohio

Alzheimer's Association, Central Ohio Chapter, receives support from Franklin County Senior Options, Central Ohio Area Agency on Aging, Council for Older Adults of Delaware County and the United Way of Central Ohio.