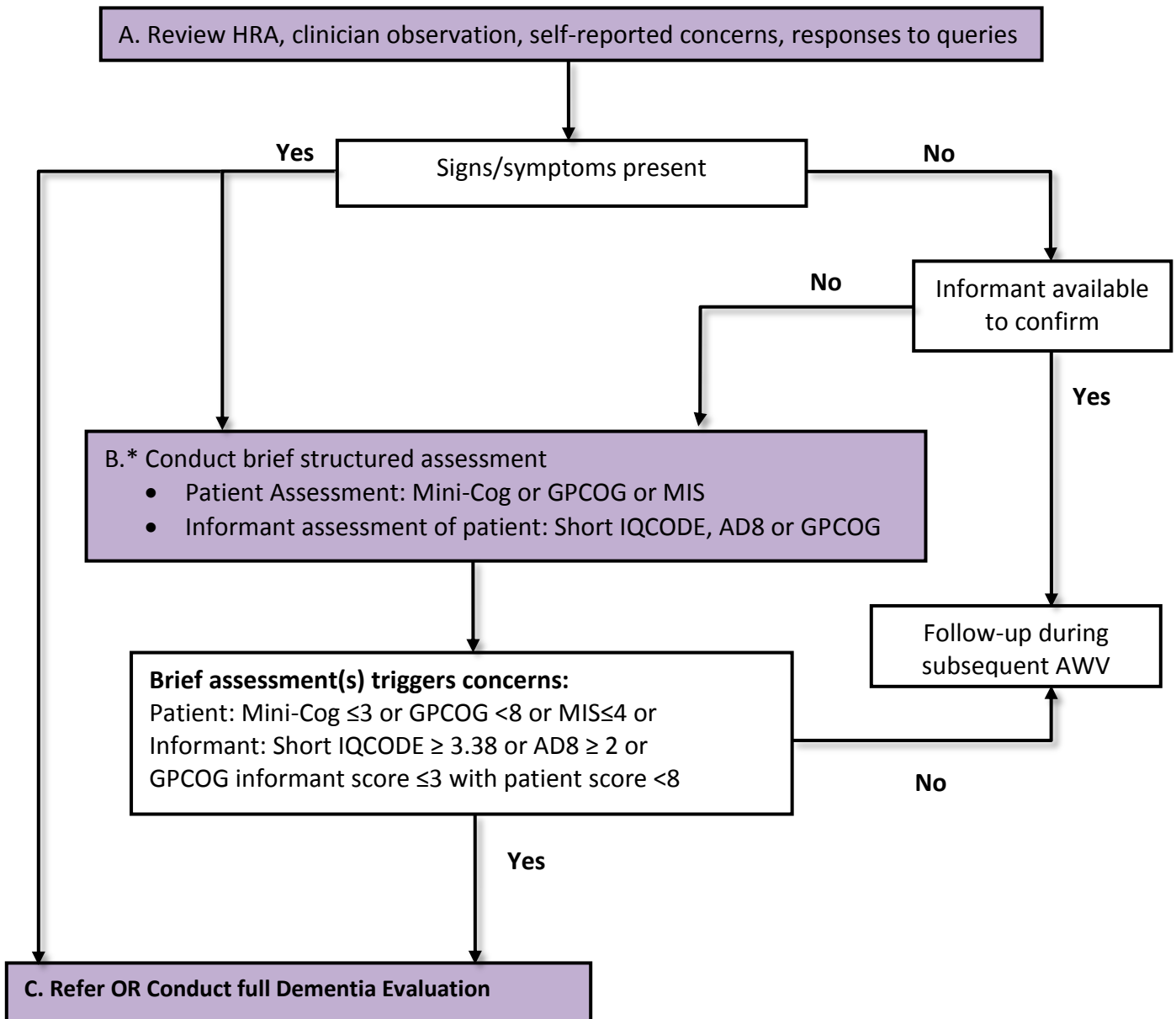


Alzheimer's Association Medicare Annual Wellness Visit Algorithm for Assessment of Cognition



* No one tool is recognized as the best brief assessment to determine if a full dementia evaluation is needed. Some providers repeat patient assessment with an alternate tool (eg, SLUMS, or MoCA) to confirm initial findings before referral or initiation of full dementia evaluation.

AWV = Annual Wellness Visit; GPCOG = General Practitioner Assessment of Cognition; HRA = Health Risk Assessment; MIS = Memory Impairment Screen; MMSE = Mini Mental Status Exam; MoCA = Montreal Cognitive Assessment; SLUMS = St. Louis University Mental Status Exam; Short IQCODE = short Informant Questionnaire on Cognitive Decline in the Elderly

Cordell CB, Borson S, Boustani M, Chodosh J, Reuben D, Verghese J, et al. Alzheimer's Association recommendations for operationalizing the detection of cognitive impairment during the Medicare Annual Wellness Visit in a primary care setting. *Alzheimers Dement.* 2012. In press.