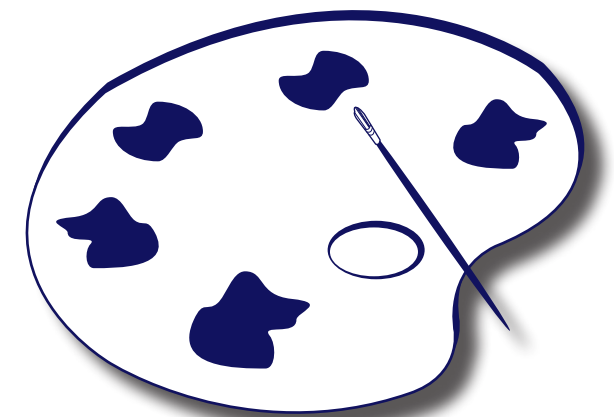


The Art of Dementia Care

2010 Dementia Education Conference

Wednesday, March 3, 2010
Park Inn Louisville East
Louisville, KY



"Mona Lisa & The Art of Dementia Care."

The Art of Dementia Care – Wednesday, March 3, 2010
2010 Dementia Education Conference
Park Inn Louisville East
Louisville, KY



This conference offers you...

- New, creative approaches to dementia care
- Plenary session on Pharmacological and Behavioral Approaches to Behaviors
- Networking with other professional caregivers
- Opportunities to question experts in a variety of care areas including end of life care, activities, collaboration in the care continuum, safety and working with challenging people!

You will come away refreshed and with new ideas for care!

Conference Agenda

8:00 a.m. – 8:30 a.m. General Registration & Continental Breakfast

8:30 a.m. – 10:00 a.m. Welcome & Keynote Presentation

Treatment of Problem Behaviors in Dementia - Greg Cooper, MD, PhD - University of Kentucky Sanders-Brown Center on Aging Alzheimer's Disease Center and Baptist Neurology

Behavioral symptoms in dementia can be among the most challenging aspects of care. Dr. Cooper will discuss these behavioral symptoms and examine both pharmacological and non-pharmacological approaches to treatment.

10:15 a.m. – 11:30 a.m. Breakout sessions

1. How to Deal with and Understand Challenging Families Davis Robinson, Ph.D. – Norton Hospital

As with any profession, human service professionals have ups and downs. However, what makes this profession different from other professions are the ranges of legitimate, expected, and difficult emotions displayed by those being cared for and their families. Because of these emotions, it is commonplace to revert to what has worked in the past, feel disrespected, and sometimes disregard these emotions, which can lead to confrontations. During these times, it is imperative to use fundamental communication skills and emphatically focus on patient and family needs during the challenging situations.

2. The Ethics of Truth-telling in Dementia Care Virginia Bell, MSW – Alzheimer's Association & David Troxel, MPH – Dementia Care Consultant

Families and professionals often debate the ethical ground for truth-telling in caregiving situations. Should the person be told the truth about his or her diagnosis? When, if ever, in dementia care are "little white lies" allowable? The presenters will offer case studies for discussion and make recommendations for effective communication in difficult situations.

3. Connecting Leaders: Fostering a Continuum of Care Panel: Scott Gibson, Connie Mefford, Vivian Bowman, Gayle Dickerson, Donna Frodge, Dolly Hester, Dana Moran, Cheryl Stout, Ken Urlage

The purpose of the panel discussion is to provide an opportunity for panelists to describe how their organizations have come together to build quality improvement communities to improve communication and address problems associated with continuity of patient care across multiple settings.

4. Creative Safety for Persons with Dementia Arthur Levesque, OTR/L, CLT– Peoplefirst Rehabilitation

This session will provide the participant with concrete and tangible tools designed to facilitate functional safety and promote quality of life in individuals who have been diagnosed with dementia. Topics and collaterals will include the following: normal aging, low vision, cognitive level specific task analysis & synthesis, falls prevention, environmental modifications to enhance safety, mitigation of deleterious behavior, etc.

11:45 a.m. – 1:30 p.m. Lunch & Presentation & Exhibits: Enhancing Memory: Creative Aging & The Brain

Dana Bradley, PhD – Western Kentucky University

Mental decline as you age appears to be largely due to altered connections among brain cells. But research has found that keeping the brain active seems to increase its vitality and may build its reserves of brain cells and connections. Dr. Bradley will share some ideas for aging creatively and maintaining brain health.

1:30 p.m. – 2:45 p.m. Breakout Sessions

1. The Boomers are Coming: Bingo Won't Cut it Anymore

Laura Williams & Becky Stapleton – Alzheimer's Association Best Friends Day Center

As a new generation comes into our arena of care, we are forced to think outside the box and get creative in planning meaningful activities. This workshop will provide numerous ideas for new, creative activities that can be applied in any care setting.

2. Training Staff on Caring Communication at the End of Life

Cathleen Kilmartin, RN-BC, ACHPN – Hosparus

This session will teach tips and techniques to empower staff to have caring communications with caregivers. Preparing Staff to have these discussions sooner rather than later results in improved quality indicators and satisfaction with end of life care.

3. Down Syndrome and Alzheimer's Disease: Diagnosis and Care Issues

Clarissa Rentz, MSN, APRN-BC – Alzheimer's Association Greater Cincinnati Chapter

It is known that the person with Down Syndrome who is aging may be affected by Alzheimer's disease. This presentation will briefly touch on the current knowledge regarding the association between Down Syndrome and Alzheimer's disease. The presentation will also address the differential diagnostic process and vocation, residential, family issues associated with the care of the person with Down Syndrome and probable Alzheimer's Disease.

4. How to Deal with Difficult Co-Workers Davis Robinson, PhD – Norton Healthcare

Is there someone in your office area that causes problems for you? Are there individuals that never see eye-to-eye with you? Do you find yourself avoiding others? If you answer yes to any of these questions, don't be surprised, because when working with others these encounters will occur. However, what you may not know is that person may be YOU! When people find it difficult to work with others, most do not reflect and say, "It may be me." Truly understanding your communication style and other's can lead to more productive encounters.

3:00 p.m. – 4:30 p.m. Virginia Bell Lectureship in Person-Centered Care -

Mona Lisa & The Art of Dementia Care –David Troxel, MPH

Virginia Bell Lectureship in Person-Centered Care



Mona Lisa & The Art of Dementia Care – David Troxel, MPH

Using examples from medical history, literature and the arts, David Troxel describes the development and history of person-centered care including the Best Friends philosophy of dementia care. The presentation will also discuss new developments and trends in dementia care and best practices.

About the presenter: David Troxel, MPH has become national and internationally known for his writing and teaching in the fields of Alzheimer's disease and long-term care. He has co-authored four influential books (most notably, *The Best Friends Approach to Alzheimer's Care*) on Alzheimer's care as well as numerous articles relating to Alzheimer's disease care and staff development and training. His latest book on activities was published in 2004. David received his Master's Degree in Public Health from UMDNJ, Robert Wood Johnson Medical School (formerly Rutgers Medical School) in 1986.

David served as Executive Director of the Santa Barbara Alzheimer's Association from 1994 to 2004. He is a past Executive Board member of the American Public Health Association and past member of the Ethics Advisory Panel for the US National Alzheimer's Association. He currently lives in Sacramento, California and works as a writer, speaker and long-term care consultant.



Registration Information

Registration Fee:

Registration includes continental breakfast, lunch and CEU fees.
Early Bird Registration (postmarked by February 12, 2010) \$95
Regular Registration (postmarked by February 22, 2010) \$110

Cancellations:

Cancellations received prior to the registration deadline of February 22, 2010 will receive a refund less a 20% processing fee. No refunds will be given after the registration deadline.

Continuing Education:

This program has been submitted to Hosparus (an approved Kentucky Board of Nursing Provider) for continuing education provider credit for the following disciplines:

- Nursing
- Social Work
- Nursing Home Administrator

The Kentucky Board of Nursing approval of an individual nursing continuing education provider does not constitute endorsement. *Participants must attend the entire day and submit a completed evaluation form to receive continuing education credits. No partial credit will be awarded.*

Location:

Park Inn Louisville East
1903 Embassy Square Boulevard
Louisville, KY 40299
502.499.6220

Hotel rooms available for the Alzheimer's Association Group Rate of \$89.95. Please call the hotel directly to make your reservations by February 17, 2010. Reservations received after February 17, 2010 will be based upon availability.

For more information call 1.800.272.3900