



**2006
Annual Report**

Alzheimer's Association
Greater Kentucky & Southern Indiana



alzheimer's  association™

the compassion to care, the leadership to conquer

Looking Forward

We passed our 25th Anniversary with great fanfare on our journey to fulfill our vision of a world without Alzheimer's disease. Yet with all our successes we still have a long journey to reach our vision.

Our ability to diagnose Alzheimer's will soon receive a major boost as dedicated scientists release their data on using PET and MRI as new tools for the medical profession in the fight against Alzheimer's disease.

New drugs are under study and our Association continues to be the world leader in private funding for research in seeking a cure. Our efforts in encouraging greater financial support for the National Institute of Health's mission of research into finding a cure for the disease are both necessary, and, we hope, successful as the federal government looks at budget issues.

As our chairman, Bill Probus, noted last year we have great hope for our future: Hope through science seeking methods of prevention and treatment; hope for the afflicted by focusing on one of our mission parameters of care and support; and hope for the caregivers through awareness and advocacy.

Yet, with all our success we still have much to do. The number of people with the disease will continue to increase in the short term as baby boomers "come of age". We still only have limited armament in our fight against the disease with only five drugs approved for use and even those have limited effect in terms of how many they help and how long.

Our partnership with the National Alzheimer's Association bodes well for future collaborative fundraising, but more funding is needed for research and programs and each of us must redouble our efforts in that arena for nothing else is as certain as failure in accomplishing our mission if we do not find a way to adequately fund the fight.

With your support, we will find new treatments, we will discover new ways to aid in prevention and we will cure Alzheimer's disease. Your partnership in those efforts and the support of the Greater Kentucky and Southern Indiana communities has enabled us to make major progress in reaching our vision of a world without Alzheimer's. We could not have come this far without you and because of your commitment to our vision and mission the future is both bright and exciting. Thank you for all you do.

R. Thomas Bodkin
Chairman, Board of Directors

Chapter Board of Directors

Chairman

Thomas Bodkin

Secretary

Scott Pitts

Members

Linda Blair
David Casey, MD
Janet Cerel
Helen Kientz

Robert Maddox
Nancy Orr-Rainey
Karen Newman
Shelly Prochaska

Richard Richter
Terry Smallwood
Laura Wigglesworth
Isabel Yates

Vice-Chair

Susan Pope

Treasurer

Scott Olinger

Advancing Research

Through the generosity of donors, the Greater Kentucky and Southern Indiana Chapter contributed directly to the Alzheimer's Association Research Grant Program. The Chapter also worked for increased federal funding for Alzheimer's research. A summary of recent advances in research can be viewed at our national website, http://www.alz.org/alzheimers_disease_research_ad.asp.

Enhancing Care and Raising Awareness

Through education and support programs, community and corporate partnerships and advocacy efforts, we touched the lives of thousands of people across Kentucky and Southern Indiana by:

- Offering 67 **Caregiver Support Groups** in 46 counties. Attendance totaled 2,408. Caregiver meetings provide a safe and supportive environment for family and friends to exchange information related to Alzheimer's disease.
- Offering a toll free telephone **Helpline** that assures around the clock connection and support. Language translation services are available in 144 languages. Last year the Chapter received 2,396 calls.
- Registering 106 people in the **Safe Return Program**, a national registry, that assists in the safe return of individuals with dementia who wander and become lost.
- Offering **Education and Training Programs** about Alzheimer's disease and associated issues for family caregivers, professionals and the general public.
 - 382 caregivers participated in 22 family caregiver programs
 - 374 persons participated in education videoconferences
 - 1,411 professionals participated in 68 professional education programs
 - 1,590 persons participated in 112 programs for the general public
- Providing **Exhibits** for 90 community events and mailing our **Newsletter** to 16,000 households
- Providing direct service to 78 participants at the **Best Friends Day Center** in Lexington, utilizing the internationally recognized dementia specific "best friends approach" to individualized care and therapeutic activities.
- Enhancing our **Chapter Website** (www.alz.org/KyIn) to provide local information conjunction with the National Association website (www.alz.org).
- Building our network of advocates who respond to **Public Policy** alerts by:
 - Communicating to Congress the urgent need for increased federal funding for Alzheimer's research. Advocates now total 2,183.
 - Sending a delegation of volunteers to Washington, D.C. to urge members of Congress to support Alzheimer's research, quality care issues, and to preserve and improve Medicaid and Medicare programs.
 - Working with state officials in Kentucky to implement a pilot nursing home dementia care training project to evaluate effectiveness of training; and in Indiana to implement a new model of delivery of dementia care training for care professionals.
 - Making our voices heard in our state capitols on issues of Medicaid and home and community services for persons with Alzheimer's and related dementias.



Raising Funds to Enhance Care, Raise Awareness and Support Research

Loyal donors, community partners, volunteers, and staff are responsible for the Chapter's success in advancing the Alzheimer's Association vision: ***a world without Alzheimer's disease***. Every person and every gift makes a difference in the fight to stop this devastating disease. We pause to celebrate our success. Together in fiscal year 2006, we:

- Raised awareness and \$575,385 through our **Memory Walk** in ten Kentucky and Southern Indiana communities to support local programs and Alzheimer's research.
- Received **Grant Funding** totaling \$45,196 to support local programs and services for persons with dementia, their caregivers and families.
- Raised awareness and \$58,611 through **Making Memories**, dinner and wine tasting events to support local programs and Alzheimer's research.
- Held **Amethyst Society** receptions to recognize and thank individuals and family foundations that contributed \$1,000 or more to support the Chapter's **Annual Giving Program**.
- Promoted the Association's mission and programs with assistance from funeral homes through the Chapter's **Memorial and Honorarium Programs** raising \$66,950 to support local services and Alzheimer's research.
- Collaborated with Community Health Charities to promote awareness about Alzheimer's and secure employee's support through **Workplace Campaigns** and other **Contributions from Organizations** raising \$155,000.
- Communicated with attorneys, financial planners and donors about **Planned Giving** opportunities that benefit the Alzheimer's Association.
- Joined with Alzheimer's Association chapters throughout the country to appeal to members of Congress to increase federal funding for research through our **Advocacy and Public Policy Program**. The federal allocation for Alzheimer's research totaled \$652 million dollars.

Chapter Staff

President/CEO
Linda Vanderhoff

Deborah Allgeier
Karen Bennett
Tonya Cox
Melinda Eaton
Fran Edwards
DeeAnna Esslinger

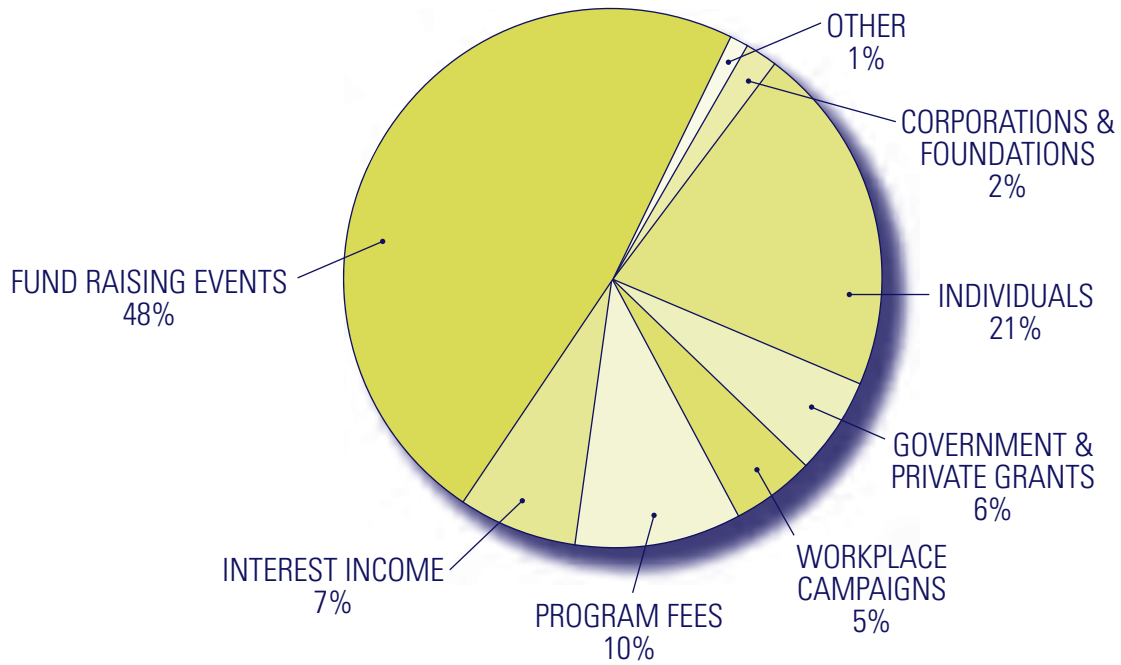
Elisa Carr-Freeman
Barbara Grossman
Carla Guthrie
Ellen Kershaw
Debbie Lacy-Goodman
Debi Longfellow

Bernetta Mabson
Aletha Malone
Allison Marcum
Jan Penick
Geri Ann Redmon
Shari Sherman

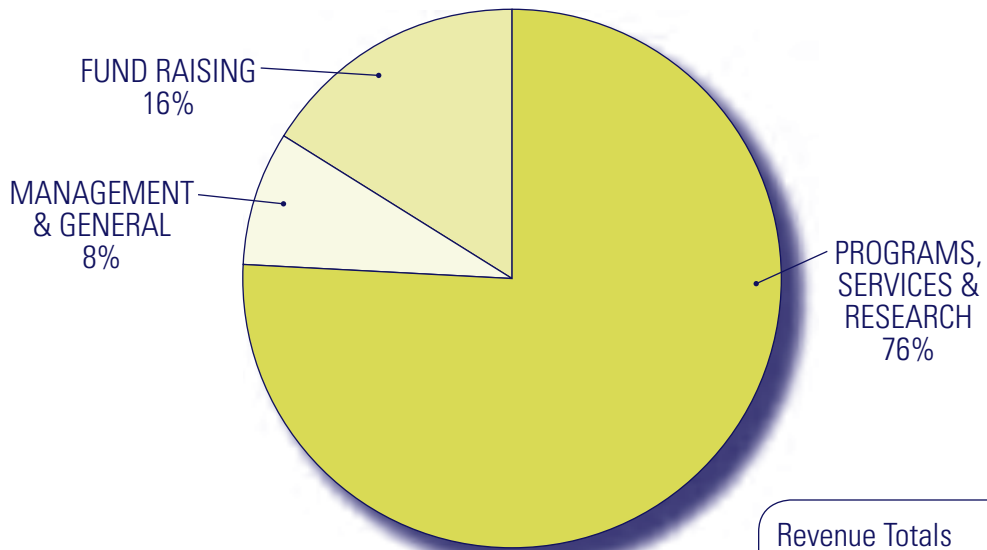
Mark Shircliffe
Judith Spooner
Rebecca Stapleton
April Stauffer
Lucy Sommers
Debbie Waters

Statement of Accountability to Our Sponsors

REVENUES



EXPENSES



Revenue Totals	\$ 1,253,485
Expense Totals	\$ 1,320,869
Year End Net Assets:	\$ 955,389

THANK YOU DONORS

We are extremely grateful for the generous help and support we have received from every one of our donors.

Corporations, Foundations, Individuals and Organizations

The following contributions of \$500 or more were received at the Alzheimer's Association between January 1, 2006 and December 31, 2006.

Aisin Automotive Casting, LLC
Ambulatory Surgery Center, LLC
Andrea Mansfield
Angelucci Company
Ann Heller
Arthur R. Salomon
Associates in Neurology, P.S.C.
Atria Elizabethtown
Atria Newburgh
Atria St. Matthews
Atria, Inc.
Audubon Dental Center
Ball Homes Inc.
Bamberger, Foreman, Oswald & Hahn, LLP
Barton House of Louisville
Becky Beanblossom
Belmont Village
Bluegrass Area Development District
Brenda K. Curtz
Brent Beanblossom
Brentwood Nursing & Rehabilitation
Brookside Senior Living
Brown-Forman Corporation
Bussing-Koch Foundation
C. Kelly Buckley
Caesars Indiana
Caretenders/Almost Family
Carolyn Porter
Casino Aztar
Catholic Diocese of Evansville
Chauncey Curtz
Christ the King Catholic Church
Christina Evers
Citizens Against Annexation of Vine Grove KY
Clark Bailey
Clark Memorial Hospital
Columbia Healthcare
Combined Federal Campaign
Community Health Charities of Kentucky
Craig T. Young
Crowe Chizek and Co. LLP
Crowe Chizek and Company
Crowe Chizek and Company LLC
CSM-Venture

Cumberland Valley National Bank & Trust Company
DAE. Industries
Daniel Pitino Foundation
Deaconess Hospital
Debbie Haaker
Deming, Malone, Livesay & Ostroff
Dennis Mcnatt
Diversicare Management Services
Dolores E. Womack
Don Gibson
Dorothy C. Joseph
Edith Hayes
Edward W. Love Foundation, Inc.
Eisai, Inc.
Elizabeth Zutt Trust
Episcopal Church Home
Estate of Haldon R. Pinkston, Jr.
Extendicare Foundation, Inc.
Fifth Third Bank
Forest Pharmaceuticals, Inc.
Foxhollow, Inc.
Franklin Asset Management Company
Fraternal Order of Eagles
Fred Butler
Fred Siegfriedt
Freedom Dodge Jeep Eagle
Frost Brown Todd LLC
Gary O. Inman
GE Foundation
Glen Ridge Health Campus
Good Samaritan Home
Gray Construction
Gregory Crum
Harding, Shymanski & Company
Harrah's Metropolis Casino-Human Resources Dept.
Health Professions Press
Helen Kientz
Heritage Center
Home Instead Senior Care
IBM Employee Services Center
Integra Bank Corp.
iPay Technologies
James A. Kovacs
James C. Griffin Trust

James E. Dorough
James R. Bartlett
James R. Fugitte
Janet C. Cerel
Jeremiah Suhl
Jerry B. Maney
Jessica Horne
Jimmy Steele
Joe Edwards Marketing
John Rice
Joseph W. Prather
Judy Kalmey
Judy Tincher
Karen Ellerbrook
Karen Newman
Karen Poulton
Keeneland Foundation
Keith Stucker
Kendall Arnett
Kentucky Utilities Company
Kindred Foundation
Kindred Healthcare Operating Inc.
Kings Daughters & Sons
Kingsbrook Lifecare Center
Koch Foundation
Koetter Construction Inc.
Laura Wigglesworth
Laurel Heights
Lexington Diagnostics Center and Open MRI
Lexington Medical Society Foundation
Lincoln Hills Healthcare and Rehabilitation Center
Linda Blair
Linda L. Crant
Linda Vanderhoff
LogistiCare Solutions
London Rotary Foundation
Lonna R. Lanier-Fountain
Lori Moore
Lucille Feast
Mark Taylor
Marymount Medical Center
Masonic Homes of Kentucky, Inc.
McBride Fund
Medco Center of Paducah
Michael Miller



Michael Rainey
Michelle T. Prochaska
Morning Pointe Ridge Assisted Living
Morningside of Paducah
Multifamily Housing Conference
Mulzer Foundation
Myrtle Wells
Nancy Orr-Rainey
Nazareth Home
New Lexington Clinic, PSC
Norma J. Savage
Oakmont Manor Intermediate Care
Oakwood Healthcare Center
Old National Bancorp
Olympia Homes
Omnicare
Our Lady of Bellefonte Hospital
Owensboro Medical Health System
Paducah Centre for Health and Rehab
Pain Management Center of Paducah

Amethyst Society *Membership includes individuals and organizations whose cumulative cash gifts total \$1,000 or more in the 2006 calendar year.*

Ann Heller
Atria, Inc.
Becky & Brent Beanblossom
Catholic Diocese of Evansville
Combined Federal Campaign

Community Health Charities of Kentucky
Craig T. Young
Dolores E. Womack
Dorothy C. Joseph

Edward W. Love Foundation, Inc.
Elizabeth Zutt Trust
Extendicare Foundation, Inc.
Forest Pharmaceuticals, Inc.
Fraternal Order of Eagles

GE Foundation
Harrah's Metropolis Casinto
James R. Bartlett
James R. Fugitte
Jan & Jerry Cerel



Parrot Heads of Lower Ohio Valley Club	Sally's Garden at Masonic Home of Louisville	The Community Foundation of Louisville Depository, Inc.	Woodland Oaks Health Care
Patricia Jackson	Sarah M. Landrum	The Hofgesang Foundation	Woodland Terrace Health Care Facility
Patricia Koch	Schwab Fund for Charitable Giving	The Integrity Foundation	Woodlands Convalescent Center
Patricia L. Corlett	Scobee Funeral Home	The Lafayette & Lexington Country Place	Yum! Brands Foundation Inc.
Pfizer Inc.	Scott Olinger	The Marshall Charitable Foundation	Zell Klein
Phyllis A. Hagan	Search Associates	The Porcini Children's Foundation	Ziemer, Stayman, Weitzel & Shoulders, LLP
Pilot Club of Jeffersonville	Sharon McWilliams	The Steilberg Foundation	
Pools Plus, Inc.	Shirley J. Farmer	Theodore G. Tempel	
Practical Care & Elder Care Solutions	Siegmund C. Reinach	Timothy Kutz	
Process Machinery Charitable Foundation	Solarbron Pointe, Inc.	Toyota Motor Manufacturing Indiana, Inc.	
Quantrell Cadillac Inc.	Southern Foods	TrinSoft, LLC	
R J Corman Railroad Group, LLC	Sportsdrome Speedway, Inc.	United Way of Gibson County	
Raymond M. Lehnert	St. Marys Health System	University of Louisville Hospital	
Rich Richter	St. Matthews Manor	V.V. Cooke Foundation	
Richard H. Starke	State Employees' Community Campaign	Vectren Foundation, Inc.	
Richard Rosenberg	Stephen M. Rice	Virginia M. Bell	
Richmond Place	Stock Yards Bank and Trust Company	W.T. Congleton Co.	
Riverbend	Superior Care Home	Wachovia Foundation	
Robert Knapp	Susan E. Fister	Wal-Mart Foundation	
Robert Maddox	Susan J. Pope	Wellington Parc of Owensboro	
Robert T. Bodkin	Suzanne Adams	Wellington Parc of Paducah	
Rockcastle Health & Rehabilitation Center, Inc.	Swope Auto Center	WellPoint Associate Giving Campaign	
Rose Ann Howard	Tates Creek High School	West Side Nut Club	
Rotary Club of St. Matthews	Ted M. Routt	West Towne Pharmacy	
Rudd Equipment Co.	Teetersville Baptist Church	Whayne Supply Company	
Russell D. Ragland	Terri D. Humes	William A. Bramer, Sr. Plumbing, Inc.	
Ruth Hunt Candy Company	Terry L. Smallwood		
S & S Tire and Auto Service Centers	The Arthur J. Gallagher Foundation		
S. L. Guthrie	The Bluegrass Parrot Head Club		

Founder's Society

The Founder's Society was created to recognize those who have made a lifetime commitment to the Alzheimer's Association through estate planning.

Helen Belleville	DeeAnna Esslinger	Henry L. Reynolds	Ray Shelton
Richard C. Brown	Louiza McCarty	Don L. Richardson	Linda Vanderhoff
Betty M. Decker	Jane Newton	Marilyn Schilling	Maureen Williams

We have made every effort to acknowledge contributions and spell names correctly. If we have inadvertently omitted or misspelled your name, please accept our apologies and report the error by calling 502-451-4266.

Jeremiah Suhl	Lexington Medical Society Foundation	Conference	Robert Maddox	The Integrity Foundation
Jimmy Steele	Linda Blair	Nancy Orr-Rainey	Robert T. Bodkin	The Marshall Charitable Foundation
Judy Tincher	Linda L. Crant	Parrot Heads Local Ohio Valley Club	Ruth Hunt Candy Company	The Steilberg Foundation
Karen Ellerbrook	Linda Vanderhoff	Patricia L. Corlett	Susan J. Pope	Virginia Bell
Karen Newman	McBride Fund	Process Machinery	Tates Creek High School	Wal Mart Foundation
Karen Poulton	Michelle T. Prochaska	Charitable Foundation	Ted M. Routt	WellPoint Associate Giving Campaign
Kindred Foundation	Multi-Family Housing	Raymond M. Lehnert	Terry L. Smallwood	
Laura Wigglesworth			The Hofgesang Foundation	

MISSION

To eliminate Alzheimer's disease through the advancement of research; to provide and enhance care and support for all affected; and to reduce the risk of dementia through the promotion of brain health.

VISION

A world without Alzheimer's

www.alz.org/KyIn

caring. concerned. connected.

1-800-272-3900

We're here to help you 24 hours a day, 7 days a week

Greater Kentucky and Southern Indiana Chapter Office Locations:

LOUISVILLE OFFICE

3703 Taylorsville Road, Suite 102

Louisville, KY 40220

Phone 502-451-4266

Fax 502-456-2701

Helpline: 800-272-3900

LEXINGTON OFFICE

1065 Dove Run Road

Lexington, KY 40502

Phone 859-266-5283

Fax 859-268-4764

Helpline: 800-272-3900

EVANSVILLE OFFICE

4770 Covert Avenue, Suite 211

Evansville, IN 47714

Phone 812-475-1012

Fax 812-475-1033

Helpline: 800-272-3900