

Partners in progress

Milestones in Alzheimer's Association philanthropy and science

ZENITH
SOCIETY
alzheimer's association



Thanks to the generosity of our philanthropic partners, the Alzheimer's Association is the nonprofit with the highest impact in Alzheimer's research worldwide. We have played a role in almost every major development in Alzheimer's science.

1981

Jerome Stone and others make charitable gifts totaling \$200,000, enabling the Association to award its first research grants in 1982. Early grantees included Dennis Selkoe, M.D., who has since become one of the world's pre-eminent Alzheimer's scientists.



1985

The Grover Hermann Foundation donates \$250,000 — the Association's largest research gift to date. Late 1980s grantees included Dr. Karen Hsiao Ashe, whose team was the first to genetically engineer mice to develop an Alzheimer's-like disease — ushering in a new era of laboratory science.

1990

Mrs. George Berlinger, Ruth Saler Blank, Peter Buchanan, Benjamin B. Green-Field Foundation, Victor Potamkin, Mr. and Mrs. Burton Resnick, and the Stone Family all pledge gifts of \$1 million or more for research — launching

the Association's Zenith Society. Since then Zenith's "venture philanthropy" has enabled scientists to secure an additional \$1 billion in funding for their Alzheimer's research studies.

1997

The T.L.L. Temple Foundation makes its first \$2.5 million gift to the Association — ultimately investing \$10 million total and funding 40 Temple Discovery Awards. One of these awards supports the research that leads to the use of PET scans to see beta-amyloid deposits in the living brain — a game-changing breakthrough in disease detection and monitoring.

"Had the Alzheimer's Association not been willing to fund our early, high-risk, high-potential exploration, this work might not have reached fruition. Now, more than ever, this is the kind of progressive research that needs Association support."
—William Klunk, M.D., Ph.D.
University of Pittsburgh

2004

The Association uses philanthropic funds to fast-track the addition of amyloid PET scans to a nationwide brain imaging study — transforming understanding of pre-symptomatic Alzheimer's and expediting FDA approval of the revolutionary diagnostic technology by at least five years.

2007

Donors including **Stan and Dotty Thurston** support an initiative to address the critical challenge of volunteer recruitment and retention in Alzheimer's clinical trials, helping launch Alzheimer's Association's TrialMatch®. Today more than 225 promising clinical studies are being conducted at 700 trials sites across the United States.

2008

A gift from **Dave and Dana Dornsife** helps launch the Global Biomarker Standardization Consortium, which developed an internationally accepted method for detecting and measuring beta-amyloid in cerebral spinal fluid — invaluable for developing and comparing the effectiveness of Alzheimer's treatments around the world.



2015

GHR Foundation partners with the Association and FBRI to invest \$10 million to expand a clinical trial testing whether drugs can prevent or delay dementia symptoms in people at increased genetic risk of developing Alzheimer's at older ages.

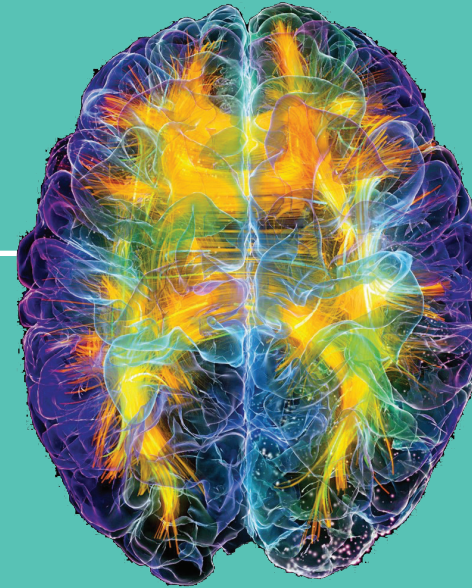
"The Alzheimer's Association plays a critical role in bringing together researchers, philanthropists, industry experts and advocates. We repeatedly have been able to work through the Association to collaboratively fund innovative research."
—Fred Miller
GHR Foundation

2014

A small cohort of donors enables the Association to invest \$8 million to launch Longitudinal Evaluation of Amyloid Risk and Neurodegeneration (LEARN), a first-of-its-kind study to identify the earliest signs of Alzheimer's and its risk factors. Their investment also adds cutting-edge tau PET imaging to a companion trial studying people with amyloid deposits in their brains.

2014

Sigma Kappa Sorority pledges \$1 million to support research focused on women and Alzheimer's disease. The **Gelfand Family / The Judy Fund, Sarah Losinger, Carol-Ann O'Mack** and others complete funding for this special initiative.



2013

The Argyros Foundation and the **Zenith Society** commit \$2.5 million to launch the Global Alzheimer's Association Interactive Network (GAAIN) — an online gateway to a cloud-based collection of Alzheimer's disease research data and sophisticated analytical tools.

2012

With funding from the Part the Cloud initiative, the Association partners with the Brin Wojcicki Foundation to invest \$2 million so researchers can obtain whole genome sequences of more than 800 individuals with Alzheimer's — the largest number of people with a single disease to ever be sequenced.

2012

A challenge gift from **Mike and Barbara Urbut** inspires a small group of donors to give a total of \$4.2 million to start a groundbreaking drug trial 18 years ahead of schedule. Their philanthropy leverages an additional \$26 million federal investment in the Dominantly Inherited Alzheimer Network Trials Unit (DIAN-TU).

2011

Jim Prugh and Diane Fatheree make a generous gift that enables the Alzheimer's Association to help launch the International Genomics of Alzheimer's Project — which soon revealed 20 genetic variations associated with increased risk of Alzheimer's.



2015

The Anne and Henry Zarrow Foundation invests \$5 million in the Alzheimer's Association Zenith Fellows Awards — among the most prestigious dementia research grants in the world — the largest gift to the program to date.

2015

A lead gift from **Dick and Marianne Kipper** enables the Association to maximize the potential of a pioneering study of the role of the vascular system in Alzheimer's disease initiation and progression. **The Jeanne N. Hunter Alzheimer's Research Fund** later fulfills the Association's commitment to the project.

2016

Leadership gifts from **John and Crystal Beuerlein, Edward Jones and Mary Barton Smith** enable the Association to invest \$4.3 million to add new drug candidates to the DIAN-TU study — potentially speeding up the identification of disease-modifying interventions. With other donors, they make additional gifts in 2017 to enable DIAN-TU researchers to increase the dosage of one of the experimental drugs being tested.



2016

Ned Goodnow, (pictured), **the Kahlert Family Foundation, Dennis Mullen** and the **Pine Family Foundation** give \$1.85 million to support a pioneering clinical trial of combination therapy to treat Alzheimer's disease.



2016

Founded and chaired by **Mikey Hoag**, the Part the Cloud gala raises \$10.8 million for the Association's Global Research Program. Part the Cloud breaks that record two years later — bringing its total number of research grants funded to 29.

2017

With investments from supporters including the **Fred A. and Barbara M. Erb Family Foundation** and **Cheryl Gross**, the Association commits \$10 million to help launch the first clinical trial to test an experimental drug in people as young as 50 who are at risk of developing Alzheimer's at older ages.



2018

Zenith Society members **Jeanne and Jim Hunter, Larry and Lynda Jodsaas, Vicky Patel, Joan and Paul Rubschlager** and **Mary Barton Smith** provide \$5 million in lead funding for the Association-led U.S. POINTER study, which will test how a multidimensional lifestyle intervention may protect cognitive function in older adults at increased risk of cognitive decline.

2018

The Alzheimer's Association doubles its annual investment in research since 2014 thanks to donors who gave nearly \$110 million via the first phase of the *Step Up the Pace* initiative. We will double our investment again by 2023.

Partnerships between scientists, philanthropists and others lead to an effective treatment and prevention for Alzheimer's disease — achieving a key goal of the 2012 National Plan to Address Alzheimer's Disease.

2025