

## ■ BREAKOUT SESSIONS

### BREAKOUT SESSION ONE

**101 – Diabetes and Dementia as a Cluster Condition among American Indian People**

*J. Neil Henderson, Ph.D.*

*Kristen Jacklin, Ph.D.*

**102 – Innovations in Safety and Technology for Living with Dementia**

*Ann Forrest Clark, OTR/L, CDRS, LDI*

*Arshia Khan, Ph.D.*

*Danish Imtiaz*

**103 – Understanding & Responding to Dementia Related Behaviors**

*Kendra Lund, LSW*

### BREAKOUT SESSION TWO

**201 – Healthy Living for your Brain & Body: Tips from the latest research**

*Kendra Lund, LSW*

**202 – Memory Loss and Dementia: An African American and Health Equity Lens**

*Robbin Frazier*

**203 – Update on Medications to Treat Dementia Disorders**

*Karen MS Bastianelli, PharmD, BCACP*

### BREAKOUT SESSION THREE

**301 – The Arts and Dementia Care**

*Natalie Hest, MT-BC*

*Karen Turner, ATR-BC, LPC*

**302 – Legal & Financial Basics after a Diagnosis**

*Suzanne M. Blank*

*Kristin Parendo*

**303 – The Caregiver's Journey to Emotional Wellness**

*Karina Krosbakken, MSW, LGSW*

*Jenna Pogorels, MSW, LICSW*

alzheimer's association®

Minnesota-North Dakota Chapter  
525 S Lake Avenue, Suite 214  
Duluth, MN 55802

[alz.org/mnnd](http://alz.org/mnnd)

**24/7 Helpline**  
1.800.272.3900

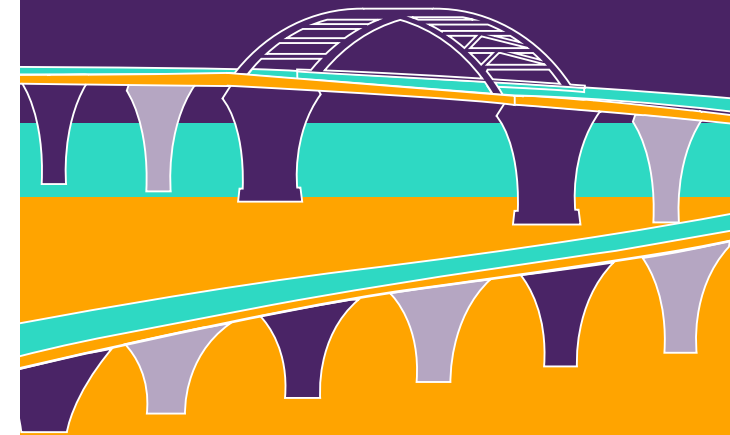


#EndALZ

alzheimer's association®

# TWIN PORTS

## DEMENTIA CONFERENCE



**July 31, 2018**

Kirby Student Center  
University of Minnesota–Duluth

# TWIN PORTS

## DEMENTIA CONFERENCE

July 31, 2018

Kirby Student Center  
University of Minnesota-Duluth

REGISTRATION OPENS JUNE 4, 2018

### REGISTER

Online: [alz.org/mnnd](http://alz.org/mnnd)  
Phone: 218.722.1713

### RATES

GENERAL – \$35  
PROFESSIONALS \* – \$75

\* A Certificate of Attendance is available.

### WHO SHOULD ATTEND?

- Caregivers, families and friends
- Professionals and students
- People with mild cognitive impairment or early dementia\*

\* Attending with a support partner is recommended.



### SCHEDULE

7:15-8:00	Check-in / Exhibitors / Breakfast
8:00-8:15	Opening Remarks Sue Spalding, CEO Alzheimer's Association Minnesota-North Dakota
8:15-9:15	<b>Keynote:</b> <i>Dementia in Indigenous Populations: Cultural Safety and a Path for Health Equity</i>
9:15-9:30	Break / Exhibitors
9:30-10:30	<b>Breakout Session One</b>
10:30-10:45	Break / Exhibitors
10:45-11:45	<b>Breakout Session Two</b>
11:45-1:00	Lunch / Exhibitors
1:00-2:00	<b>Breakout Session Three</b>
2:00-2:15	Break / Exhibitors
2:15-3:15	<b>Panel Discussion:</b> <i>Dementia in the Northland: What is being done to address care and support?</i>
3:15-3:30	Closing Remarks / Call to Action Alzheimer's Association Minnesota-North Dakota

Register online and view session descriptions at [alz.org/mnnd](http://alz.org/mnnd).

### KEYNOTE PRESENTATIONS

#### MORNING KEYNOTE

#### **Dementia in Indigenous Populations: Cultural Safety and a Path for Health Equity**

*Kristen Jacklin, Ph.D.*

Compared to majority populations, Indigenous peoples are disproportionately and uniquely impacted by dementia and other related chronic diseases. This presentation will review findings from research on Indigenous experiences and perceptions of dementia and the socio-political and historical context in which dementia is being experienced. Recent knowledge translation and exchange efforts to create a culturally safe model of dementia care appropriate for Indigenous populations including culturally specific health promotion materials will be presented.

#### PANEL DISCUSSION

#### **Dementia in the Northland: What is being done to address care and support?**

*Facilitated by Baihly Warfield - WDIO/WIRT reporter*

Local healthcare experts will come together for a panel discussion on dementia in the Northland and how healthcare systems are working to address this growing concern in our communities. Local community resources will also be on hand to share what services are available to those living with dementia, their caregivers, friends, and family members. Panelists to include representatives from Essentia Health, St. Luke's, Senior LinkAge Line, Douglas County Aging & Disability Resource Center and the Alzheimer's Association.

