

EDUCATION SERIES

COMMUNITY HEALTH WORKERS

FRIDAY, AUGUST 22, 2025

1:00 P.M. - 2:00 P.M. CST

10 WARNING SIGNS OF ALZHEIMER'S

Describe typical age-related changes in memory, thinking, and behavior. Recognize common warning signs of Alzheimer's disease and dementia. Learn about the ten steps to approach a loved one with memory concerns and the resources available through the Alzheimer's Association.

[REGISTER HERE](#)



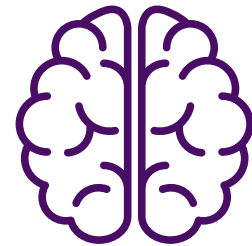
FRIDAY, OCTOBER 4, 2025

1:00 P.M. - 2:00 P.M. CST

LIVING WITH ALZHEIMER'S DISEASE EARLY-ONSET

This program includes information, tools, and strategies for addressing the unique issues that often accompany a diagnosis of Alzheimer's disease and related early-onset dementia. Early-onset is a person 65 years of age or younger when symptoms first appear

[REGISTER HERE:](#)



FRIDAY, SEPTEMBER 19, 2025

1:00 P.M. - 2:00 P.M. CST

HISPANIC HERITAGE MONTH HOW TO REDUCE THE RISK OF COGNITIVE DECLINE

During Hispanic Heritage Month, we celebrate Hispanic American champions but also raise awareness about this group's increased risk of Alzheimer's disease and ways to reduce cognitive decline. Learn the Alzheimer's Association's five tips to help reduce the risk of cognitive decline and resources to share with your community.

[REGISTER HERE:](#)

**1 CE approved by DSHS
for Community Health
Workers for each class.
All programs are via Zoom**