

Benefiting the
ALZHEIMER'S  **ASSOCIATION®**

THE BEACON OF HOPE *gala*

CO-CHAIRS
CURTIS & AMY FRANCOIS
JOHN & LINDA TRACY

HONORING
DAVID PAYNE, CHAIRMAN
PAYNECREST ELECTRIC

APRIL 25th, 2026

THE RITZ - CARLTON, ST. LOUIS

STLALZGALA26.GIVESMART.COM

BEACON OF HOPE GALA

PAST CHAIRS

Robert and Ayumi Cullen, 2025
Ken and Melissa Cella, 2024
Sen. Brian Williams and
Dr. Lindsey Schuessler, 2024
Jeff and Lotta Fox, 2023
Sen. Roy and Abby Blunt, 2023

PAST HONOREES

Dr. David Holtzman, 2025
John and Linda Tracy, 2024
Jim and Stacey Weddle, 2023

GREATER MISSOURI CHAPTER BOARD OF DIRECTORS

Emily Pitts, Chair
Jason Bean
John Beuerlein
Todd Berta
Joey Blomker
Maureen Bryan
Yvette Burke
Danny Chadakhtzian
Grace Davis
Michael Donnelly
Kevin Hardage

Steve Johnston
Tijuana Julian
Matt Mikula
Marcia Rauwerdink
Wm. Maurice Redden, MD
Suzanne Schindler, MD, PhD
Allen Serfas
Lindsey Shockley
Senator Brian Williams
Jeff Wist

Director Emeritus
Joanne Knight
John Morris, MD

Ed Clay, Regional Vice President, CFRE

ALZHEIMER'S  ASSOCIATION®

Greater Missouri Chapter
11433 Olde Cabin Rd, #100
St. Louis, MO 63141

THE BEACON OF HOPE *gala*

Alzheimer's is more than just memory loss — it is a progressive and fatal disease. Currently, more than 7 million Americans are living with Alzheimer's and 12 million provide unpaid care for them. Locally, the disease continues to devastate our families, finances and future.

In Missouri, there are:

- » 122,000 people living with Alzheimer's.
- » 226,000 people who care for them.
- » These caregivers provided 354M hours of unpaid care valued at \$9.5B.



For more information, visit alz.org/facts

WHY SUPPORT THE BEACON OF HOPE GALA & THE ALZHEIMER'S ASSOCIATION?

The Beacon of Hope Gala is an annual event that brings together corporate and philanthropic leadership from the Greater Missouri area to celebrate the leading role they take part in by advancing early detection, risk reductions & treatments that offer hope for a cure for Alzheimer's Disease. This premier event raises awareness and funds to support our vision of a world without Alzheimer's and all other dementia.

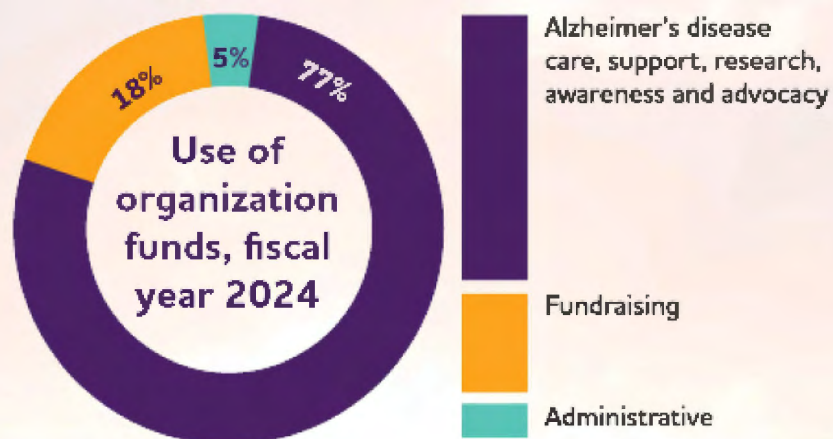
The Alzheimer's Association is the world's leading organization raising funds & fostering awareness to:

- Accelerate Research
- Engage Communities
- Advance Public Policy
- Support People & Families

The first survivor is out there.

Your support represents the hope that makes all of the difference.

WHERE DO MY DONATIONS GO?



*National Alzheimer's Association reports

THE BEACON OF HOPE *gala*

PATRON PARTNER OPPORTUNITIES

With significant medical advancements on the horizon, there has never been a more urgent and monumental time to serve as a Dinner Committee Member for the Alzheimer's Association Gala in St. Louis.

Your efforts raise vital funds and elevate awareness towards the full mission of Alzheimer's Association's support, education, advocacy and research efforts locally.

Beacon of Hope Diamond Patron

\$100,000

Event Benefits*

- One table of ten in premium seating placement at the Beacon of Hope Gala
- Logo/Listing scrolling on large screens in ballroom with opportunity for pre-recorded 30-second welcome video message
- Verbal recognition from Emcee as Diamond Patron from stage
- Logo/Listing on front cover of evening's program
- A member on either the auction or event planning committee (please nominate with commitment form)

Marketing Benefits

- Logo/Listing prominently featured as a Diamond Patron on the Beacon of Hope invitation, provided commitment made by January 12th, 2026
- Logo/Listing recognition on the Beacon of Hope webpage
- Two digital ads announcing the partnership, co-branded with the partner and the Alzheimer's Association to run at time of commitment and week of event

Additional Benefits

- Six invitations to the Catalyst for a Cure Cocktail Reception in Feb/March
- Logo/Listing on digital signage at the Catalyst for a Cure Cocktail Reception
- Four invitations to a post-event celebration hosted by the Beacon of Hope Honorees
- Tailored educational opportunity for employees and/or clients
- Exclusive invitation to webinars/events hosted by the Alzheimer's Association

*Customization available by request

PATRON PARTNER OPPORTUNITIES

Beacon of Hope Platinum Patron

\$50,000

Event Benefits

- One table of ten in preferred seating placement at the Beacon of Hope Gala
- Logo/Listing scrolling on large screens in ballroom
- Verbal recognition from Emcee as Platinum Patron from stage
- Logo/Listing on front cover of evening's program
- A member on either the auction or event planning committee (please nominate with commitment form)

Marketing Benefits

- Logo/Listing prominently featured as a Platinum Patron on the Beacon of Hope invitation, provided commitment made by January 12th, 2026
- Logo/Listing recognition on the Beacon of Hope webpage
- One digital ad announcing the partnership, co-branded with the partner and the Alzheimer's Association to run week of event

Additional Benefits

- Four invitations to the Catalyst for a Cure Cocktail Reception in Feb/March
- Logo/Listing on digital signage at the Catalyst for a Cure Cocktail Reception
- Two invitations to a post-event celebration hosted by the Beacon of Hope Honorees
- Tailored educational opportunity for employees and/or clients
- Exclusive invitation to webinars/events hosted by the Alzheimer's Association

PATRON PARTNER OPPORTUNITIES

Beacon of Hope Gold Patron

\$25,000

Event Benefits

- One table of ten in quality seating placement at the Beacon of Hope Gala
- Logo/Listing scrolling on large screens in ballroom
- Verbal recognition from Emcee as Gold Patron from stage
- Logo/Listing on front cover of evening's program
- A member on either the auction or event planning committee (please nominate with commitment form)

Marketing Benefits

- Logo/Listing prominently featured as a Gold Patron on the Beacon of Hope invitation, provided commitment made by January 12th, 2026
- Logo/Listing recognition on the Beacon of Hope webpage

Additional Benefits

- Two invitations to the Catalyst for a Cure Cocktail Reception in Feb/March
- Two invitations to a post-event celebration hosted by the Beacon of Hope Honorees
- Tailored educational opportunity for employees and/or clients
- Exclusive invitation to webinars/events hosted by the Alzheimer's Association

"The Alzheimer's Association is viewed as an international leader when it comes to advancing research, setting clinical care guidelines, providing comprehensive support for individuals and families affected by Alzheimer disease, and working towards a world free of all dementias."

-Dr. David Holtzman, 2025 Beacon of Hope Honoree

Director, Charles F. and Joanne Knight
Alzheimer's Disease Research Center



PATRON PARTNER OPPORTUNITIES

Beacon of Hope Silver Patron

\$10,000

Event Benefits

- One table of ten at the Beacon of Hope Gala
- Listing of Patron Partnership from stage

Marketing Benefits

- Listing recognition on the Beacon of Hope webpage
- Listing in event program

Additional Benefits

- Two invitations to the Catalyst for a Cure Cocktail Reception in Feb/March
- Tailored educational opportunity for employees and/or clients
- Exclusive invitation to webinars/events hosted by the Alzheimer's Association

Beacon of Hope Bronze Patron

\$5,000

Event Benefits

- One table of ten at the Beacon of Hope Gala
- Listing of Patron Partnership from stage

Marketing Benefits

- Listing recognition on the Beacon of Hope webpage
- Listing in event program

Additional Benefits

- Tailored educational opportunity for employees and/or clients
- Exclusive invitation to webinars/events hosted by the Alzheimer's Association

2026 Beacon of Hope Gala

benefiting the Alzheimer's Association - Greater Missouri Chapter

SATURDAY, APRIL 25, 2026

THE BALLROOM AT THE RITZ-CARLTON | CLAYTON, MO

PATRON INFORMATION:

NAME(S) _____
(AS TO BE DISPLAYED)

ADDRESS _____

CITY / STATE / ZIP _____

PHONE _____ EMAIL _____

PATRON PARTNERSHIP COMMITMENT:

◆ DIAMOND \$100,000

◆ PLATINUM \$50,000

◆ GOLD \$25,000

◆ SILVER \$10,000

◆ BRONZE \$5,000

◆ I would like to make a 2-year commitment to secure my
2027 Beacon of Hope Partnership at the 2026 Patron Partner Level

PAYMENT INFORMATION:

◆ CHECK INCLUDED PAYABLE TO 'ALZHEIMER'S ASSOCIATION'

◆ PLEASE INVOICE ME

ATTENDANCE:

◆ YES, I (we) PLAN TO ATTEND GALA AND HOST OUR TABLE OF 10

◆ REGRETFULLY, I CANNOT COMMIT TO HOSTING A TABLE THIS YEAR

◆ Please accept the above commitment as a donation in my absence.

If your Patron Partnership benefits include a member on the Beacon of Hope Gala Committee,
please include their name and email here: _____

Please return by mail or email to:

Alzheimer's Association | RE: Gala | 11433 Olde Cabin Rd, #100 | Creve Coeur, MO, 63141

Shannon Bodenschatz: 314-952-0357

Email: shbodenschatz@alz.org

THE BEACON OF HOPE *gala*

THANK YOU TO OUR 2025 PATRON PARTNERS

DIAMOND PATRON

John & Crystal Beuerlein

PLATINUM PATRON

Edward Jones

GOLD PATRON

Emerson

Daugherty Family Foundation

Merry & James Mosbacher

Penny Pennington & Michael Fidler

SILVER PATRON

Dan & Connie Burkhardt

Joe & Lyn Castellano

David Chubak

Dot Foods

Mcknight Place Assisted Living & Memory Care

Parc Provence

John & Linda Tracy

Washington University

BRONZE PATRON

Armstrong Teasdale

Dr. Randall Bateman

Jason & Angela Bean

Dr. Tammie Benzinger

Brian & Amy Buckley

John & Crystal Beuerlein

Dr. Carlos Cruchaga

Robert & Ayumi Cullen

Michael Donnelly

Drury Hotels

EISAI

Graybar

Michael & Jo Marie Hejna

Dr. David & Tracy Holtzman

Steven & Bonnie Johnston

Knight ADRC

Heather & Matt Mikula

Moneta

Dr. John Morris

Emily & Richard Pitts

Allen & Sally Serfas

Simmons Bank

Hon. Ann & Ray Wagner, Jr