



# 2025 YEAR IN REVIEW

MASSACHUSETTS/NEW HAMPSHIRE CHAPTER





## MA/NH CHAPTER BOARD OF DIRECTORS

Rob Baldassarre, *Vice Chair*  
Kerry Dennis  
Marty Donohue  
Amber Evans  
Betsy Groves  
Edmarie Guzman-Velez, PhD  
Doug Hano  
Kathy Harvard  
Jean Morse Jones  
Rich Linton  
Deb Mazza-Scanlon  
Stuart McLeod  
Michael McManama

Kim Memmesheimer  
Hector Montesino  
Joe Montminy  
Crista Martinez Padua, *Clerk*  
Jeremy Perisho  
Dan Press, MD  
Kevin Reynolds  
Julie Rivers  
Joe Salerno, *Chair*  
Carleton Simpson  
Judith Thermidor  
Romina Wilmot

## EXECUTIVE STAFF

Ginny Hanbridge, *CEO, MA/NH Chapter & New England Regional Leader*  
Susan Antkowiak, *Vice President, Programs & Services*  
Chelsea Gordon, *Director of Public Policy*  
Heather Maloney, *Senior Director, Communications*  
Jayne Paragona, *Vice President, Development*

We are proud to present our 2025 Year in Review, highlighting the significant progress we've made in the fight against Alzheimer's disease and all other dementia over the past year. Together, our dedicated volunteers, board members, community partners, public policy advocates and staff have provided invaluable support for the nearly 162,000 individuals living with this disease in Massachusetts and New Hampshire.

Researchers continue to make progress in the areas of prevention and diagnostics, with many new advances in the pipeline. In May, the FDA approved the first blood test to aid in the diagnosis of Alzheimer's disease, which we hope will make it easier for more individuals to receive an accurate diagnosis earlier. We continue to fuel critical progress in dementia science, investing in promising research that is tackling the disease from multiple angles – including over \$23.7 million in active funding awarded to local researchers.

Over the past year, we have served more than 30,000 individuals who have accessed our breadth of education programs and support groups, both in-person and online, and Dementia Care Coordination support, all at no cost to families. We continue to expand the range of programs and services we offer to ensure care and support for individuals living with Alzheimer's disease, their families, and healthcare professionals, including a new program offering free continuing education credits to professionals in the field.

Thanks to the generosity of our supporters, this year we raised over \$19.6 million to continue funding research and care and support programs in local communities across our two states. Our advocacy efforts resulted in increased federal resources for research and caregiver support, plus additional local funding to expand awareness initiatives and our Dementia Care Coordination program (DCC).

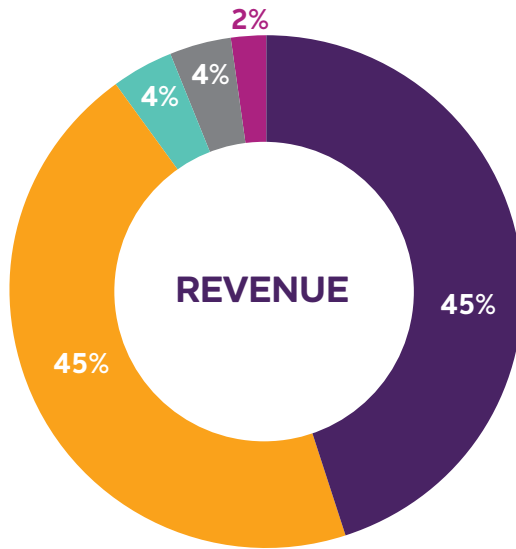


We continue to grow our diversity and inclusion initiatives, reaching new communities and strengthening our volunteer network. This year, we expanded our outreach to underserved areas, forming new partnerships with community leaders and grassroots organizations, with a focus on the Black, LatinX and Haitian communities.

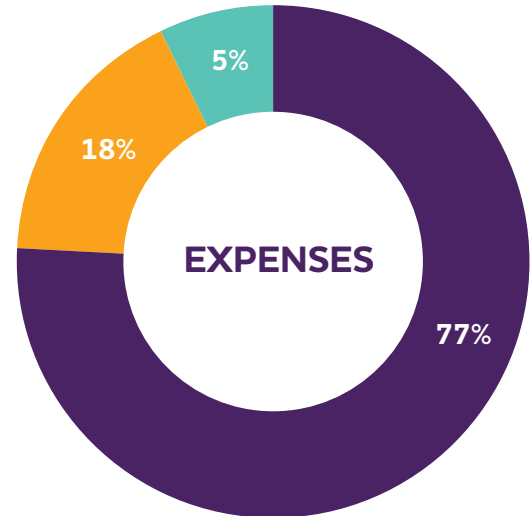
None of this would be possible without your unwavering support, and we are deeply grateful for your continued commitment.

*Joe Salerno, Chair, MA/NH Chapter Board of Directors*  
*Ginny Hanbridge, CEO, MA/NH Chapter and*  
*New England Regional Leader*

Our local Massachusetts/New Hampshire Chapter total revenues for FY25 (July 1, 2024 through June 30, 2025) were **\$20,914,959**. Total expenditures were **\$18,903,275** with **77%** going directly to Alzheimer's care, support, research, awareness and advocacy.



- Special Events
- Individual & Corporate Contributions
- Corporate & Foundation Support
- Educational Programs, Training Fees & Government Grants
- Memorials & Tributes



- Alzheimer's Care, Support, Research, Awareness & Advocacy
- Fundraising
- Management & General

## BBB WISE GIVING ALLIANCE

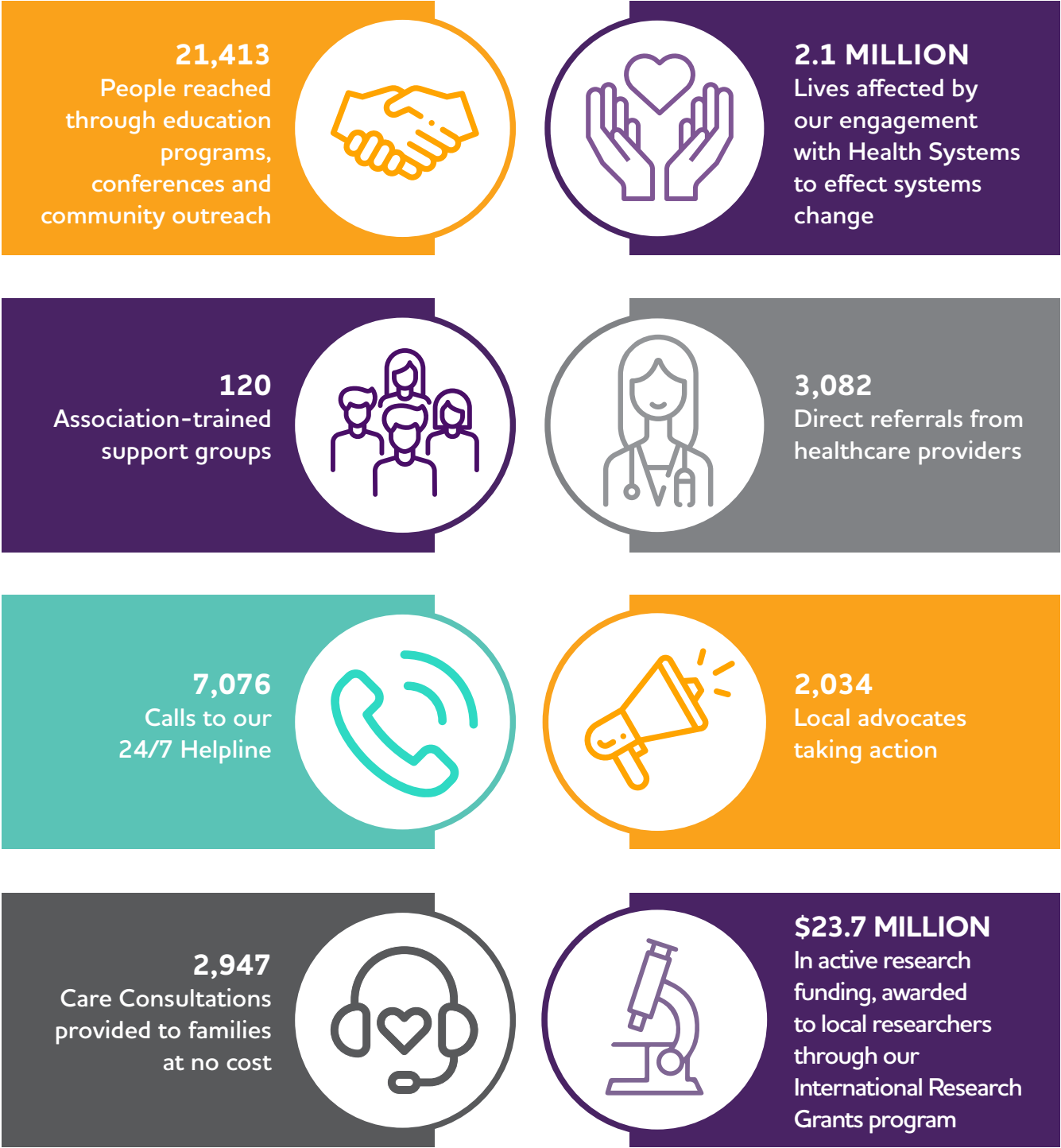
The Alzheimer's Association exceeds relevant watchdog standards in its allocation of donor dollars. According to the **Better Business Bureau Wise Giving Alliance**, nonprofit organizations should spend at least 65% of total expenses directly on program activities, with remaining funds going to administrative and fundraising expenses.

*The Massachusetts/New Hampshire Chapter was proud to merge with other chapters across the United States to form one unified and nationwide organization effective July 1, 2016. Due to the merger, audited financials are now released on a consolidated basis for the entire merged organization only. These most recent audited financial statements are available at [www.alz.org/about/annual-report](http://www.alz.org/about/annual-report). Local results are unaudited.*



As the world’s leading voluntary health organization in Alzheimer’s care, support and research, we are committed to serving the 162,000 people living with Alzheimer’s in Massachusetts and New Hampshire. We also offer care and support services for more than 338,000 family and friends caring for someone with Alzheimer’s or another dementia. This year, we were in every community through education programs, support groups, and our 24/7 Helpline. No one should face this disease alone—help is just a phone call away.

DURING THE PAST YEAR...



**D**ementia Care Coordination is an innovative model developed by the Alzheimer's Association MA/NH Chapter to support individuals living with dementia and their caregivers. Rooted in a successful study conducted in partnership with the U.S. Department of Veterans Affairs, the program fosters coordination among healthcare providers and payers to ensure timely, personalized support for families navigating dementia care.

In FY25, Dementia Care Coordination received over 3,000 referrals, connecting caregivers to expert guidance and resources. Each referred caregiver received proactive outreach from a highly trained Dementia Care Consultant, offering free care consultations via phone, video, or in-person meetings. Care consultations are tailored to individual needs and may include:

- Emotional support and coping strategies
- Education about dementia and disease progression
- Communication techniques for interacting with individuals living with dementia
- Referrals to Alzheimer's Association services and community resources

Caregivers are offered six months of follow-up support, and referring partners receive a summary of recommendations for inclusion in the patient's medical record. Since its inception in 2013, the program has served more than 22,000 families across New England.

Dementia Care Coordination continues to grow, with over 40 active partner organizations across New England. Long-standing partners include:

- Blue Cross Blue Shield of Massachusetts
- Beth Israel Deaconess Medical Center
- Boston VA Medical Center
- Boston Medical Center
- Brigham and Women's Hospital
- UMass Memorial Hospital
- Baystate Medical Center
- Point32Health

In 2025, Whittier Street Community Health Center, the Neurology Department at Concord Hospital (New Hampshire), Valley Springs, and Neurology



Center of New England joined Dementia Care Coordination.

The Alzheimer's Association MA/NH Chapter remains deeply committed to ensuring that Dementia Care Coordination reaches communities that are disproportionately affected by dementia and face systemic barriers to care. These include individuals from diverse racial, ethnic, and linguistic backgrounds, as well as those living in socioeconomically disadvantaged or medically underserved areas. The program has built strong partnerships with organizations that serve populations at higher risk for developing dementia and with limited access to resources. These include:



- Four Senior Care Options (SCO) plans serving individuals dually eligible for Medicare and Medicaid
- Two PACE programs supporting MassHealth-eligible elders
- Seven Federally Qualified Health Centers (FQHCs) providing care regardless of ability to pay
- Cambridge Health Alliance's House Calls program, serving exclusively homebound elders

To meet the linguistic and cultural needs of these communities, the MA/NH Chapter employs two bilingual Dementia Care Consultants—one fluent in Spanish and the other in Haitian-Creole—and utilizes an interpreter service supporting over 200 languages. Referrals for Spanish and Haitian-Creole-speaking caregivers have

remained steady, reflecting the program's responsiveness to community needs.

The Commonwealth of Massachusetts has recognized the program's value by continuing its annual funding of \$300,000. Equally vital to the success and longevity of Dementia Care Coordination is the steadfast support from donors and philanthropic foundations. Their long-term commitment has enabled the program to grow, innovate, and reach thousands of families with compassionate, expert care. This sustained investment ensures that caregivers across New England—especially those in underserved communities—receive the guidance and resources they need to navigate the challenges of dementia.



**T**he Alzheimer's Association 24/7 Helpline is available around the clock to support individuals affected by Alzheimer's or other forms of dementia, as well as their loved ones. Staffed by knowledgeable professionals, this free and confidential service offers guidance and answers to a wide range of questions related to dementia. Common areas of support include:

- Information about memory loss, Alzheimer's disease and dementia
- How to understand and respond to dementia-related behaviors
- Communication techniques
- What to do after you or someone you know receives a diagnosis
- Treatment options
- Care planning, including finding home care or residential care
- Managing caregiver stress
- Addressing safety concerns
- Legal and financial planning

The 24/7 Helpline can also help you find education programs and support groups in your community.

Whether you're living with Alzheimer's or another form of dementia, or supporting someone who is, help from the Alzheimer's Association is always within reach. You can connect with us by phone, email, or live chat—anytime, day or night.

ALZHEIMER'S ASSOCIATION®  
**24/7 HELPLINE**  
**800.272.3900**

You don't need to wait for a crisis to reach out. We're here whenever you need someone to talk to. And thanks to our interpreter service, support is available in over 200 languages.

In FY25, families in Massachusetts and New Hampshire made 7,076 calls to the 24/7 Helpline. Research shows that even one conversation with our team can lead to better mental health, improved access to resources, and clearer action plans for caregivers. Here's how one caregiver from our chapter network described their experience with the Helpline program:

*After getting to consult with a care consultant, I felt lighter! The guidance I received was outstanding. I got more support and counsel in one meeting than I have in the past year.*

One call really does make a difference.





**T**he Alzheimer's Association remains steadfast in its vision of a world without Alzheimer's and all other dementia. While we work toward that goal, we are committed to empowering individuals living with dementia and their caregivers with the resources, support, and guidance they need to navigate their journey with confidence. Throughout FY25, we offered services both virtually and in-person, including:

- 24/7 Helpline (800.272.3900), providing around-the-clock support every day of the year
- Care Consultations offering personalized, confidential guidance and resources
- Support Groups fostering connection and understanding in a safe, facilitated environment
- Education programs tailored for individuals living with dementia, caregivers, healthcare professionals, and the broader community

By the close of the fiscal year, over 30,000 individuals took advantage of our services, at no cost to them - more than 21,400 of whom were unduplicated. This impact would not be possible without the dedication of our volunteers, whose tireless efforts continue to expand our reach and meet the growing demand for services and support. We are deeply grateful for their commitment and compassion.

So much of our impact is made possible through meaningful collaborations with community



organizations. While we can't highlight every partnership here, we're proud to share a few examples that reflect the breadth and depth of our work:

- **Boston Public Health Commission (BOLD Initiative):** Together, we advanced public health strategies to better support individuals impacted by dementia, with a focus on equity and access in underserved communities.
- **AARP Partnership for Alzheimer's & Brain Awareness Month:** We co-hosted a series of Brain Healthy Living programs featuring expert dietitians and presented *Ask the Expert: Preventing and Treating Cognitive Decline* presented by a leading specialist and subject matter expert from Beth Israel Deaconess Medical Center. And we hosted *Caregiver Conversations: Journey of Hope* and *Navigating the Dementia Care Journey*, offering practical strategies and heartfelt stories from caregivers and experts.
- **Specialized Trainings for Professional Audiences:** Our offerings included *Challenges of Dual Diagnosis* for over 300 professionals; bimonthly Person-Centered Dementia Care training sessions in a Train-the-Trainer format, and a dementia care planning toolkit session for nearly 120 professionals in partnership with members of the Governor's Advisory Council on Alzheimer's and Dementia
- **Unique Programs and Forums:** Nearly 600 individuals living with early-stage dementia and their care partners attended *Living Well After the Diagnosis*, an empowering half-day program featuring expert guidance and peer insights; and over 350 attendees joined an educational session on Differentiating Dementias led by leading clinicians from Mass General Brigham, Yale, and Westchester Medical Center.

These collaborations exemplify our shared commitment to improving lives and building a more dementia-friendly future.

**Alzheimer's disease and other dementias disproportionately affect communities of color and underserved populations. Older Black Americans are twice as likely to develop these conditions compared to older white Americans, and older Hispanic Americans face a one-and-a-half times greater risk. Women represent nearly two-thirds of those living with Alzheimer's or dementia. Many individuals in underserved communities lack access to essential education, support, treatments, and services.**

In response, the Alzheimer's Association is deepening its commitment to health equity by partnering with trusted community organizations and leaders who share our mission to eliminate barriers and ensure that all individuals—regardless of race, ethnicity, gender, or socioeconomic status—receive the care and support they deserve.

This year, the Alzheimer's Association Massachusetts/New Hampshire Chapter collaborated with 118 community organizations serving diverse and underserved populations across both states. These partnerships enabled a wide range of outreach activities, including health fairs, media engagements, community forums, and educational programs—all designed to raise awareness about Alzheimer's, dementia, and brain health.

While the full scope of our work is too extensive to detail, the following highlights showcase the depth and impact of our efforts:

- Roxbury YMCA & Age Strong: Dr. Carl Hill, Chief Diversity, Equity & Inclusion Officer at the Alzheimer's Association, presented *Twice the Risk: Dementia's Impact on Communities of Color*, followed by a community discussion in Roxbury, MA.
- Boston Rhythm Riders & Vine Street Center: Partnered with the Dance Line Organization for a vibrant morning of learning, dancing, food, and community connection.
- Whitney Center, Jackson, NH: Delivered *Understanding Alzheimer's and Dementia* at a rural community center.
- Portsmouth, NH PRIDE: Participated for the seventh consecutive year.
- Greater Worcester Alzheimer's Partnership & Dementia Friendly Worcester: Hosted a professional education event featuring a panel on reaching diverse populations.
- Age Span, Lawrence Mayor's Health Task Force & Lawrence COA: Co-hosted the annual Latino Caregiver Event in Lawrence, MA with Spanish-language programming, live music, and interactive activities.
- Harbor Health PACE, Brockton, MA: Provided Haitian-Creole language education to personal care attendants.
- Urban League Foster Grandparents, Springfield, MA: Delivered an educational program tailored to older adults.
- Springfield Adult Day Health Programs: Presented *Ten Warning Signs of Alzheimer's* in both Spanish and Vietnamese.
- Friends of Indian Senior Citizens: Offered education programs at lunch events in Worcester, Burlington, and Westford, MA.







Our Diversity, Equity & Inclusion (DEI) Committee continues to grow and thrive. Now chaired by Romina Wilmot, founder of MyHealthFair.com, the committee includes representatives from organizations such as the Philippine Nurses Association of New England, Inquilinos Boricuas en Acción, Friends of Indian Senior Citizens, Jewish Family & Children's Services, and Age Strong. Together, they help promote programs, identify new outreach opportunities, and strengthen community connections. A highlight of the year was a networking event at our Newton, MA office featuring *Everyday Boston*, a nonprofit that fosters connection across social and economic divides through storytelling—an inspiring reminder of the power of shared experiences in building inclusive communities.

In the coming year, we look forward to building on this year's progress to further deepen our relationships with diverse communities and expand access to education, care, and support.







**The Alzheimer's Association played a pivotal role in advancing research, science, and treatment for Alzheimer's disease, highlighted by major developments unveiled at the 2025 Alzheimer's Association International Conference (AAIC).**

One of the most impactful announcements was regarding U.S. POINTER, a two-year clinical trial examining whether a combination of lifestyle interventions may prevent or delay cognitive decline for those at risk. Results showed that structured programs involving exercise, nutrition, cognitive engagement and monitoring other health factors significantly improved memory and thinking in older adults at risk for

cognitive decline. The Alzheimer's Association announced a commitment to develop implementation strategies following these promising results.

The Association also released its first clinical practice guidelines for blood-based biomarker tests, offering clinicians a standardized approach to using these tests for diagnosing Alzheimer's. These tests are less invasive and more accessible than traditional methods like PET scans or lumbar punctures, and they represent a major step toward earlier and more equitable diagnosis.

The Association also introduced ALZPro, a hub offering the latest clinical guidelines, education and training, research publications and practical tools

for researchers, clinicians and dementia care providers. Built to empower all dementia professionals, ALZPro delivers timely, relevant resources to advance evidence-informed, person-centered care.

The MA/NH Chapter was busy bringing the latest information on Alzheimer's and dementia science, research and treatment to local communities through the delivery of education programs. Some of these programs featured national and local leaders in the field, including Dr. Dan Press, Chief of the Division of Cognitive Neurology at Beth Israel Deaconess Medical Center, and Dr. Clare Sexton, Alzheimer's Association Senior Director of Scientific Programs and Outreach.

**The focus of the Health Systems initiative is meaningful engagement with Health Systems at an enterprise level to implement sustainable policies and processes to improve access to high-quality dementia care. The Health Systems work has four main goals:**

- Improve health outcomes
- Enhance the patient and caregiver experience
- Reduce the burden on clinicians
- Effectively manage the cost of care

In order to meet these goals, a national team of Health Systems Directors serve as consultants and work with leadership at key health systems to



identify barriers, address care disruptors, increase clinician knowledge, and improve access to care. We do this with a portfolio of products, including:

- Guidance on implementing or creating a Dementia Care Navigation Model based on existing models
- Consultation on insurance payment models, including the Centers for Medicaid and Medicare Services GUIDE (Guiding an Improved Dementia Experience) Model
- Providing dementia education to primary care practices through our 12-session Alzheimer's and Dementia ECHO (Extension for Community Healthcare Outcomes) Program, a learning and guided practice model
- Consulting on the Geriatric Emergency Department certification through the American College of Emergency Physicians
- Dementia Operations Plan consultation, designed to improve inpatient care for people living with dementia who are receiving inpatient or Emergency Department care
- Dementia Care Coordination caregiver support model (only available in New England)
- Guidance on treatment implementation, including consultation on the use of the ALZ-NET patient registry

The Health Systems work is measured by the number of lives that are affected by adoption of the processes and products listed above; that is, the overall reach of a program, not the actual number of patients. In FY25, there were 2.2 million unduplicated lives affected by the work throughout New England.

Health Systems in Massachusetts and New Hampshire with which we have worked closely this year include:

- Mass General Brigham Health
- Baystate Health
- UMass Memorial Health
- Beth Israel Lahey Health
- Dartmouth (fka Dartmouth Hitchcock) Health
- Concord (NH) Regional Health

**We'd like to thank the many companies and private foundations that contribute so generously to our mission and share our vision of a world without Alzheimer's and all other dementia.**

### **\$250,000+**

Commonwealth of Massachusetts  
Essex County Community Foundation

### **\$100,000 - \$249,999**

MPG Corporation  
Point32Health Companies  
The TJX Foundation, Inc.

### **\$50,000 - \$99,999**

Biogen  
Bank Of America Foundation  
Blue Cross Blue Shield of Massachusetts  
Blue Cross Blue Shield of Rhode Island  
BMW of Peabody  
Eisai Inc  
Gate City Casino  
Norfolk County Commissioners' Office  
UBS Business Solutions US, LLC  
The Herb Chambers Companies

### **\$25,000 - \$49,999**

Benchmark Senior Living LLC  
Capital Group Companies  
Empower  
Goldman Sachs Asset Management  
Hartford Provisions Companies  
Johnson & Johnson  
Lantheus  
LCB Senior Living  
Meridian Investments, Inc.  
New Balance Foundation  
Seacoast Women's Giving Circle

### **\$10,000 - \$24,999**

Alegeus  
Alnylam US, Inc.  
American Century Investments  
Apollo Global Management  
Arbors Gives Back  
Belfort Group  
BlackRock Inc.  
BNY Charitable  
Boston Foundation  
Philanthropic Initiative  
Boston Marine Society  
Bridgeview  
IT Consulting & Staffing  
Bristol Myers Squibb  
Broadridge Financial Solutions  
Brown & Brown Insurance  
Catholic Health Foundation of Greater Boston  
Cognito Therapeutics

CVS Health  
Deloitte  
Eastern Bank-Cambridge Trust  
Embrace Home Care & Health Services  
Faber Daeufer & Itrato PC  
Franklin-Templeton  
Hamilton Company Charitable Foundation  
Hilliards Chocolates LLC  
Inmusic Brands, Inc.  
Ipswich Investment Management Co. Inc.  
Merck  
MFS Investment Management  
Pegasystems, Inc.  
PwC  
Qualcomm Foundation  
RiverWoods  
Safety Insurance Charitable Foundation Inc.  
Senior Whole Health by Molina Healthcare  
SGA  
T. Rowe Price  
Tortimaki Foundation  
Turkey Trot For The Memory, Inc.  
UKG Inc.  
UnitedHealthcare  
Vanguard Charitable



## **LANTHEUS**

In June, Lantheus invited the Massachusetts/ New Hampshire Chapter to be the beneficiary of their annual charity golf tournament, where over 180 golfers helped to raise funds and awareness for Alzheimer's and all other dementia. Together with their employees, vendors, and friends, Lantheus raised over \$210,000 for our mission! Lantheus will continue their commitment by participating in the 2025 Greater Boston Walk to End Alzheimer's and serving as the Promise Garden Sponsor.



## PURPLE PUMP-UP FOR ALZHEIMER'S

Seventeen Rapid Refill convenience and Garrett's Family Market locations throughout Massachusetts, New Hampshire, and Rhode Island held a five-week campaign where customers made donations in the stores and at the gas pumps. In addition, Volta Oil made a matching gift, and for two days, five cents for every gallon of gas pumped was donated to the Association. Now in its 14th year, Purple Pump-Up for Alzheimer's is the largest convenience store cause-marketing campaign for the Alzheimer's Association nationwide, raising \$129,087 in 2025!



### \$5,000- \$9,999

AARP

Abbvie Inc

Advisors Charitable Gift Fund

A Hand Up Foundation

AgeSpan

AllianceBernstein

Arbella Insurance Foundation

Artisan at Hudson

AYCO Charitable Foundation

Bald Hill Builders

Barbato Construction Co., Inc.

Bay State Federal Savings

Charitable Foundation

Baystate Health, Inc

Boston Athletic Association

Boston Evening Clinic

Foundation, Inc

Boston Scientific Corporation

Bridges By Epoch

Brooksby Village, Inc.

Cape Cod Aggregates Corp.

Castinetti Realty Group

CFGH Holdings

Chinburg

City Therapeutics

Coca-Cola

Consigli Construction

Core-Mark International, Inc.

Covington & Burling

Dell

Demoulas Foundation

EMCOR Services Northeast

Eversource Energy

Foundation, Inc.

Exeter Area General Federation of

Women's Club

Ernst & Young

General Environmental Services

Grimes King Foundation for the

Elderly, Inc.

Harmony Homes By the Bay

Independent Pipe And

Supply Corporation

J. Calnan & Associates, Inc.

John Hancock Financial

Services, Inc.

Johnson O'Hare Co., Inc.

Koopman Lumber

KPMG

Lathrop Community, Inc.

LC Anderson, Inc

Life Molecular Imaging

Lindon Ponds

Lundbeck

Mass General Brigham Health Plan

Mechanics Corporative Bank

MMS Holding Inc.

National Philanthropic Trust

Nancy Conger Weldon

Charity Foundation

New England Clean Energy, Inc.

Next Step Healthcare LLC

North Shore Bank

Northbridge Companies

Novo Holdings

Organogenesis

Paul Macrina Electrical

Pentucket Bank

Polar Beverages

Powers Law Group LLC

Proofpoint

Prudential

Quanterix

Rubin and Rudman LLP

SanaClis

SBLI Charitable Foundation, Inc.

Sentinel Group

Shell Oil Company

Sunrise Senior Living

Systems Engineering Services

Corporation

Tandem Bagel

Target Corporation

The Newbury of Brookline

The Penates Foundation

The Point Group

Uncommon Charitable Impact

Vendetti Motors Inc

Vigil Neuroscience

Walgreen Co.

Welch Senior Living

White Mountains Capital, LLC

**Over the last year, our public policy team advocated for those living with Alzheimer's and dementia, and their families, in Massachusetts and New Hampshire.**

## MASSACHUSETTS PUBLIC POLICY & ADVOCACY

Despite the anticipated increase in prevalence of Alzheimer's in Massachusetts, there is hope with advancing research and the first FDA-approved treatments. In January, we introduced a legislative agenda that aims to prepare the Commonwealth for this new era of treatment. Our top priority legislation, *An Act to improve care and prepare for the new era of Alzheimer's and dementia*, would ensure families have access to the services they need and the Commonwealth is better prepared to respond to this public health crisis. In addition, our advocates also supported *An Act relative to patient access to biomarker testing to provide appropriate therapy*, which would require appropriate insurance coverage for biomarker testing to support the early diagnosis of Alzheimer's and other dementias.

Our 2025 Massachusetts Advocacy Day was held on February 26, 2025 at the Massachusetts State House. We were grateful to be joined by 136 advocates, an increase of 65% over the previous year. Our advocates shared their stories and asked for support of our legislation in 113 meetings with legislative offices. During the morning programming, we heard from early stage advocate Dan Hogan, as well as former CEO Jim Wessler. In addition, we honored Representative Tom Stanley and



Senator Patricia Jehlen for their dedication to those living with Alzheimer's. Later in the morning, Representative Danielle Gregoire, Representative Meghan Kilcoyne and Senator Jake Oliveira provided remarks on their legislation. To close out the initial program, we held a panel discussion on the current state of Alzheimer's in Massachusetts before our advocates headed out to meet with legislators.

We were successful in our advocacy efforts to secure \$300,000 for Dementia Care Coordination and \$250,000 for Alzheimer's public awareness efforts in the final Massachusetts Fiscal Year 2026 state budget. This critical funding will increase awareness of Alzheimer's warning signs and resources and provide direct support services to family caregivers and patients.



## NEW HAMPSHIRE PUBLIC POLICY & ADVOCACY

This year we successfully advocated for increasing the funding for the state's Caregiver Respite Grant Program. We were able to obtain an additional \$100,000 annually for the program in the state's budget, which means the state allocated over \$800,000 for the biennium to directly support New Hampshire caregivers and their loved ones living with the disease. We also increased our collaboration with the EMS personnel community with the passage of SB 202.

On March 12, 2025, we hosted our annual Advocacy Day in New Hampshire. Throughout the course of the day, we held impactful meetings with high ranking members of the House and Senate, including



the Speaker of the House and the Senate Minority Leader. We also hosted a luncheon for our legislative champions. Finally, we closed out the day by meeting with newly elected Governor Ayotte, who proclaimed March 12, 2025 NH Alzheimer's Association Advocacy Day!

## FEDERAL ADVANCEMENT

In June of this year, we traveled to Washington, D.C. for the annual AIM Advocacy Forum. This year we had 36 advocates attend, including six early stage advocates and their care partners. During one session, New Hampshire advocates Kerry Dennis and Leah Farley shared the inspiring story of their friendship through their diagnosis on the main stage. We ended Forum with our Hill day, where we met with 15 congressional offices to discuss our current federal priorities, including increasing Alzheimer's research funding, providing training for primary care providers and other priorities.

During the course of the year, we continued to have meetings with our congressional delegations in Massachusetts and New Hampshire to ensure that Congress continues to help us accelerate progress for Alzheimer's and dementia, not halt it.

Without the tireless dedication of our hundreds of advocates across Massachusetts and New Hampshire, we would not be able to achieve the remarkable progress we have made on the state and national levels. With their incredible work, we are one step closer to our vision of a world without Alzheimer's and all other dementia. You can learn more about our work at [AlzAdvocacyMANH.org](https://AlzAdvocacyMANH.org).



## MA/NH ADVOCATES CO-CHAIR AIM ADVOCACY FORUM

The 2025 Forum was an exceptionally amazing experience this year, as our advocates Leah Farley and Hector Montesino were the 2025 AIM Advocacy Forum Co-Chairs! They did an outstanding job leading over 1,000 advocates through a deeply impactful program of inspiring panels and speakers. They each shared their stories of how Alzheimer's has irrevocably impacted their lives; Leah with her own diagnosis while still in her 50s, and Hector with his abuela being the driving force behind his passion for our mission. Leah and Hector shared how they found meaning and purpose in their advocacy, and energized everyone at Forum to continue on our fight for a world without Alzheimer's and all other dementia!





**T**he 13th Annual Hope on the Harbor gala was a tremendous success! More than 430 guests joined us for an unforgettable evening as we celebrated continued progress in the “new era of treatment”—momentum that was made possible by generous supporters and fundraising events like this one.

The 2025 Executive Leadership Committee was chaired by Marty Donohue, Founding Partner at Full Contact, Rob Baldassarre, former Partner at KPMG, and Rich Linton, President & COO of Empower. This year’s event honored The Pardus Family for their steadfast commitment to raising funds and running the Boston Marathon as part of Team End ALZ. We also honored UBS as our corporate honoree for the company’s ongoing support of The Washburn Challenge, an event hosted by board member and UBS employee Stuart McLeod as part of the Alzheimer’s Association’s The Longest Day program.

A standout moment of the evening was a performance by *The Voice* star and country music artist Jay Allen. Jay shared the story of his mother’s journey with Younger-Onset Alzheimer’s and sang his song “Blank Stares” that he wrote in her honor.

We also heard remarks from the Binder/Packer Family, who graciously supported this event at the \$100,000 level.

We are incredibly grateful to the volunteer committees whose time, energy, and passion made this event possible. To our sponsors and attendees, thank you as well! Your generosity helped us to raise over \$1.2 million to advance our mission and support our vision of a world without Alzheimer’s and all other dementia.





Please **SAVE THE DATE**  
for our 2026 Hope on the Harbor  
event on  
**WEDNESDAY, MAY 20**  
at The Renaissance Boston Seaport.  
To learn more about joining one of  
the committees for our 2026 gala or  
becoming a sponsor, please  
reach out to Adrienne Ross at  
[alross@alz.org](mailto:alross@alz.org).

### 2025 EXECUTIVE LEADERSHIP COMMITTEE

Rob Baldassarre, Co-Chair	Mark Livingston
Marty Donohue, Co-Chair	Ryan McEniff
Rich Linton, Co-Chair	Stuart McLeod
Stephen Clarke	Hector Montesino
Amber Evans	Greg Moodie
Jodie Goff	Andy Orth
Barry Greene	Joe Salerno
Paul Kraft	John Stadtler
Jackie Lewis	John Sullivan
Melody Libby	

### 2025 HOST COMMITTEE

Victoria Calcagno	Debbi Logan
Laura Caso	Innessa Manning
Morgan Curtis	Jeremy Perisho
Chris Leibman	Deb Silberstein

### 2025 AUCTION COMMITTEE

Christina Hennessey, Co-Chair	Gabi Lowe
Nadine Ritchie, Co-Chair	Jasmine O'Brien
Morgan Curtis	Afton Pavletic
Janet Huettelman	Lori Pontes
Holly Linton	Arline Tchaprastian
Marisa Lockhart	Michele Tibbert
	Peter Zammer



# CONCERN & AWARENESS

*Our Communications team is charged with bringing the Alzheimer's Association's work to cities and towns across Massachusetts and New Hampshire. Utilizing both traditional and social media, we help educate the public about Alzheimer's and dementia while increasing awareness of the Association and our mission.*



## SPEAKING OF ALZHEIMER'S

Presented by the New England Region  
of the Alzheimer's Association

ALZHEIMER'S ASSOCIATION

Speaking of Alzheimer's is a new podcast produced by the New England Chapters of the Alzheimer's Association. Twice a month, we share stories of people connected to Alzheimer's or dementia in order to foster a community of understanding and support.

**OVER 29,000 TOTAL PLAYS**



@alzheimersmanh



@alzmanh

## EARNED MEDIA IMPRESSIONS

**Over 21.1M**

## CHAPTER WEBSITE VIEWS

**Over 97,000**



**830**

**SOCIAL MEDIA POSTS**



**72**

**UNIQUE STORY PLACEMENTS**



**500**

**GRAPHIC DESIGN  
PIECES CREATED**



**S**upport through family foundations and individual gifts provide valuable resources for the Massachusetts/ New Hampshire Chapter. Hundreds of individuals, families and family foundations gave generously this year to move our mission forward through care and support, advocacy and research. We are deeply grateful to each and every donor for their commitment and kindness throughout the year.

### **\$25,000+**

Donna & Art Appel  
Binder/Packer Family via the  
Harold Casty Family Trust  
Renee & Michael Carrel  
Pamela & Jeffrey Choney  
E & L Campbell Family  
Foundation  
Eisenberg Family Trust  
Beth & Richard Fentin  
AnneMarie & Mark Freitas  
JacBel Foundation  
Jeanne Krieger  
Leif D. Jacobsen  
Holly & Rich Linton  
Suzanne & David Lissy  
Innessa Manning &  
Karthik Ramanathan  
Chris Meyer  
Carol & John Moriarty  
Peter Nikolakopoulos  
Carol O'Neil  
Parker Family Foundation  
Richard & Ann J. Prouty  
Foundation, Bank of America,  
N.A., Co-Trustee  
Paula & Arthur Rabe  
Richard Schilder  
Bruce Rogoff  
Reynolds & Pamela Smith  
Foundation  
Warren Waugh

### **\$10,000 - \$24,999**

Patricia & Bruce Bartlett  
Jeffrey M. Berry  
Robert J. Bettacchi  
Boucher & Lakin Families  
Brooks Brown  
Wesley Card  
James Cataldo  
Suzi & Dwight Churchill  
Stephen Columbia  
Marc Costantini  
David Cotter  
Davis Family Charitable  
Foundation  
Jean Donaghy  
Debbie Early  
Alexis Egan  
Anne & Chad Gifford  
Cynthia Gompers  
Matthew Graber  
Green Family Charitable  
Foundation  
Beth Greenspan & Wayne Owen  
Jacqueline Grenache  
Shana & Hugh Griffiths  
Peter Grua  
Steven Harrold  
Kathleen & Robert Henderson  
Hyman & Shirley Hill Foundation  
Kahn Family Charitable  
Foundation  
Bernice Kuca  
Denise Lavoie  
Dr. Teresa Lavoie  
Steven Lavoie  
Dr. Suzanne Lavoie  
Margaret Law  
Christopher Ludwig  
Malcolm MacNaught  
Robert Martin  
Jerry Mcdermott  
John Mcdowell  
Chris Meyer  
James Moran  
Bob Morrison  
Kenneth A. Najarian  
Carole & Raymond Noveck  
Matt O'Connor  
Katia & Andy Orth  
Pardus Family  
Hetal Patel

Sunny Patel  
Vincent F. Petroni  
John Pirotte  
Geoffery Rehnert  
Charlene Renfrow  
Clare & Gerard Richer  
Anne-Marie & Jim Ross  
Martha Salmon  
Barbara Scolnick  
Maureen Shea-Seifert &  
Robert Seifert  
Adam J. Slifka  
Daniel Souw  
Mr. & Mrs. Richard Spillane  
Alexa Squitieri  
Matt Steele  
Carolyn & Harry Stoller  
Timothy Taussig  
Lee Tesconi  
The Adi & Jerry Greenberg  
Foundation  
The Charlesview Foundation  
Jennifer Tzitzon  
Van Siclen Family Foundation  
Gabe Vincenzo  
Warren Alpert Foundation  
Margaret Yeh  
Sarah Zelley

### **\$5,000 - \$9,999**

American Endowment  
Foundation  
Deborah & Amory Aldrich  
Martha & Rayce Anselmo  
John Arakelian  
Beth Athanasoulas  
Philip Barr  
Jeffrey Bergholtz  
Rebecca & Paul Blanchfield  
Ralph A. Bolognese  
Katrine Bosley  
Denise Brookhouse  
Stephanie Carnahan  
Susan Caruso  
Alison M. Chase  
Steven Clark  
Leo Coffey  
Madeline Coffin  
Ed Cornellier  
Bob Covino  
Morgan Curtis

## VOLUNTEER SPOTLIGHT

# Sebra Barcuis



Sebra Barcuis served as her mother's caregiver until her passing in 2021; she now gives back to the Alzheimer's Association by serving as a volunteer educator, advocate, and support group facilitator. "The Alzheimer's Association provided personal education and support to me as a

caregiver throughout my mother's journey, and I want to do the same to educate and empower caregivers and people living with dementia," she says. Sebra, a nurse, calls the Association "Hope in Action", saying "It is so rewarding because I love learning and sharing information, and can genuinely speak from my experience to empower, educate and support others."

Carol Deane  
Ira Deutsch  
Maureen Dibble  
Rachel Dibner  
Deidre Donohue  
Melissa Downs  
Margaret English  
Louis & Lou Falcone  
Sarah & Michael Fentin  
James Fitzgerald  
Michael Foley  
Taylor Lynn Galland  
Joseph Giannetti  
Jodie & Todd Goff  
Brian Goffinet  
Ken Goodrich  
Lane Goss  
Jordan Green  
Richard B. Hardy  
Richard Hiersteiner  
Ron Homan  
David Jones

Jana M. Kaplan  
Wyatt Khosrowshahi  
Lee Larkin  
Leibman Family  
Richard Lewis  
Linde Family Foundation  
Shelley & Derrell Lipman  
Muffin & Peter Lindenmeyer  
Rich Linton  
Paul Macrina  
Brian A. Mahler  
Dana Mccollum  
Mary McDonald  
Kelly McGarr  
Stuart McLeod  
William McLeod  
Vin McMahon  
Melissa Moon  
Steven Myers  
Patrick Morley  
Lay L. Ong  
Jeffrey Piantedosi

Derek Pratt  
Robbin Price  
Justin Pritchard  
Laura Radko  
Phyllis Reynolds  
Jonathan Rich  
Richard Lubin Family Foundation  
Jennifer Robinson  
Linda Ronan  
Marilyn & Leon Rosenberg  
Philip Roy  
Jake Ruby  
Missy & Joe Salerno  
Sargent Family  
Gail & Ryan  
Bill Schmicker  
Spencer Schwartz  
William Sempolinski  
Venita Shirley  
Arthur W. Shores  
Patricia Simmons  
Mary Speare  
Spier Family Foundation  
Susan Stewart  
Charles Sullivan  
John Sweet  
The Daniel Hogan Charitable  
Foundation  
The Joseph & Anna C. Dias, Jr.  
Foundation  
Susan Primm Thel  
Sebastian Trousil  
Brent Vaughan  
Sue Watjen  
Eileen & Kevin White  
Sandra Wilfand  
Greg Wilson  
Max Winograd

### **\$1,000 - \$4,999**

Norman L. Abram  
Michael Abrams  
Benjamin Adner  
Paula Agrusa  
Leslie Alden  
Kyle Alexander  
Kristen D. Allaire  
Kristine Allard  
Joseph Allen  
Deborah Allinson  
Kimberlee Allison

Joseph Alvarado  
Josie Amendola  
Kristin Anagnost  
Deborah Andwood  
Amy Ansen  
Ruth Archer  
Ron Ardizzzone  
Emily Ares  
Patrick Arey  
Andrew Aronson  
Deborah Babson  
Kathleen Bacon  
Patrick Baird  
Terry Baker

Rob Baldassarre  
Eleanor Ball

Emily Ball  
Nannie Balliette

Carolyn Banks  
Joseph Baptista

Ted Bardasz  
Philip Barr

Alana Barrett  
Kevin Barrett

Corrine Barry  
Sarah Barton

Kerri M. Bean  
Chris Beisler

Thomas S. Bell  
Adam Belmore

Penny L. Bentley  
Grace Benveniste

Kelly Berardi

Berkshire Taconic Community  
Foundation

Joel Berman

Scott Berman

Nate Bertone

Patricia Bettger

Beverly & Les Blicher

Servjeet Bhachu

Mike Binder

Ellen Biren

Andrew Black

Roderick H. Blackburn

Kevin J. Blake

Mary Blanchette

Brian Blomerth

Wayne Bloom

Joshua Bock

Michi Boddupalli

Brenda Boelens  
Paul Bohmiller  
Nathalie Boily  
Karen Bommart  
Elsa Bondlow  
Kevin Boova  
Paul Botana-Gumbs  
Caroline Boyd  
Lisa Bradley  
Deborah & John Bratshi  
Patti Bray  
Lori Brennan

April Broderick  
Romkaew & Karl Broehm  
Thomas Brooks  
Elaine Brouillard  
Anthony Broullire  
Daniel Brown  
Arthur Brown  
Amber Brown  
Stephanie Bruno  
John Buccigross  
Nancy Buck  
Dr. Andrew Budson

---

## VOLUNTEER SPOTLIGHT

# Katherine O'Malley

When Katherine O'Malley's grandmother, Esther, was diagnosed with Alzheimer's, Katherine watched her mom Karen take care of Esther over the course of the disease. Soon, Katherine started volunteering for the Alzheimer's Association as a way to turn her grief, sadness and anger into positive change. "My



volunteer work has provided an outlet to help others, connected me with new friends, and linked me to a community that is working towards the same goal: finding a cure to Alzheimer's and all dementia," she says. "The Association has really meant the world to my whole family, including my mom, my sister, Emily, and my partner, Jessica, who participate in advocacy work and the Walk to End Alzheimer's with me in memory of our loved ones." Her passion carries over to her professional life as well: Katherine has worked on a number of research studies related to Alzheimer's and dementia in the Greater Boston area. "The Alzheimer's Association has given me great purpose and great friendships, and a roadmap for how to make a positive impact in the world."

---



Donald Bulens  
Laura Buonopane  
Denise Burbank  
Chris Burke  
James Burke  
Margaret & Michael Butler  
Tom Byers  
Kathryn Cade  
Corey Calla  
Mckenzie Callaghan  
Thomas Callahan  
John F. Calvi  
Michael Camara  
Clay Campbell  
Louis M. Caputo

Edward Carberry  
Amy S. Carmusin  
Santo Carnabuci  
Leslie Carr  
Jane Carr  
Andy Carter  
Lorraine Casey  
Adam Caslow  
Lori Cassorla  
Iris Castro  
Catherine Fitzgibbons  
Michael Cerasuolo  
George Chaisson  
Dr. Vincent Chan  
Nina Chao

Kevin Chapman  
Melissa Chicoine  
Lauren Chin  
Kathy Chiverton  
Ruth Clark  
Lindsey Clark  
Robert Clark  
Jill Cohen  
Ellen Cohen  
Heather Collins  
Breida Collins  
Helen Connell  
Timothy Connelly  
Hilary Connery  
Brian Connolly  
Brian Considine  
Lorraine Conway  
Joshua Coombes  
Karen Corbosiero  
Marcia M. Corey  
Charlee Corra  
Elizabeth K. Corriveau  
Mary Cowell  
Lori Cowles  
Linsley Coyle  
Erika Craven  
Michelle Credit  
Alex Cribbes  
John Cronin  
Ariel Cudkowicz  
Robert Culver  
James Cummings  
Katie Curran  
Michael Curran  
Don Curtis  
Robert Cushman  
Eric D'Alessandro  
Rebecca D'Amour  
Stephen Daly  
Deirdre Dam  
Voula & Peter Danas  
Alexis Dandreta  
Diane Daren  
Beatrice Dasher  
Jeff Davis  
Michael Davis  
Patricia Day  
Karen Day  
Janice Dayton  
Sandra Dejong  
Michelle Demeo

---

## VOLUNTEER SPOTLIGHT

# Shivani Munjal



Shivani Munjal serves as a long-distance caregiver for her mother, who has dementia. “Walking this journey with my siblings, we often felt lost and unsure of where to turn for help,” she says. “As a child, you never imagine your parents losing the ability to do simple daily tasks, like brushing their teeth. That experience

deeply shaped me.” She now volunteers as a community educator, which is her way of giving back and helping others. “My work with the Association has impacted me profoundly. It has given me greater insight into what families go through as they care for an aging loved one, and it has deepened my empathy for their challenges,” she says. Her goal is to provide support for families—support that she knows is desperately needed. “I know firsthand the toll caregiving can take on a family. That’s why it’s so meaningful to empower people with local resources and to remind them that they are not alone.”

John Demeritt  
Charles Denault  
Brenda Denby  
Mark Dence  
Alan Dern  
Richard Destrempe  
Sarah Deveau  
Tucker Devoe  
Paul Dewey  
Michelle Dias  
Alessandra Diaute  
Tim Dibble  
Edward Dickson  
Susan Dieterle  
Joseph A. Dinarello  
William E. Dinn  
Sheri Disney  
Hugh Doherty  
Brian Doherty  
Maura Donahue  
Karen Donahue  
Vj Donnelly  
Jenny Doros  
Mary & Jeremy Douglass  
Paul Douglass  
Nicholas DuBiago  
Deborah Dubois  
Maureen Ducey  
Craig Duglin  
Susan Duhaime  
Walter Dwyer  
Stuart Edelman  
Evans Edwards  
Lawrence Elawit  
Bruce Emerson  
Sam English  
Bruce Epstein  
Michael Eramo  
Essex County Community  
Foundation  
Marianne Evangelou  
John Evans  
Beth Evans  
Beth Everett  
Kenneth Farmer  
Robert Farrell, Jr.  
Jessica Fazzio  
Maurice Feinstein  
Eric Feldhake  
Olga Feldman  
Deirdre Fenick

Mark Ferguson  
John Ferrara  
Martin Ferrarini  
Marilyn Finch  
David Finley  
Tim Fisher  
Janice Fiske  
Deirdre FitzGerald  
Leslie Fitzgerald  
Catherine Fitzsimmons  
Richard Fleiss  
Katie Florence  
Tabatha Flores & John Hebert  
Patrick Folan  
Judith Foley  
John Foley  
Todd Fonner  
Ellen Ford  
Elizabeth Ford  
David Foss  
Albert Foster  
William Foster  
Ann Fragala  
Michael Francione  
Linda Frasch  
David Fredrick  
Kenneth Froewiss  
John Furse  
David Gacioch  
Jonathan Gaines  
Michael Galasso  
Philip Galati  
Chris Galland  
John Galloway  
Sharon Galpin  
Carl Garcia  
Peter J. Garrett  
Ken Gear  
Richard Gedney  
Timothy Gehlmann  
Nicolas Gennetti  
Sofie Gentner  
Jean George  
Dave Gettleman  
Hillary Ghitelman  
Jack Ghublikian  
Juliet Giangregorio  
Tracey Gilbert  
Robert Gilligan  
David J. Girouard  
Amanda Giroux

Jason Glass  
Christopher Glennon  
Jim Glickman  
Peter Goedecke  
Peter Goodwin  
Gordon-Hering Family Fund  
Kyle Gorman  
Gabriele Goszcz  
James Grace  
Margaret Grady  
Thomas Grape  
Karen Gray  
Emma Greenman  
Jane & Gary Greenstein  
Navdeep Grewal  
Katherine Gross  
Hannah Grove  
David Gruber  
Ann Guilbeau  
Sharon Gunn  
Tom Gunning  
Susan Gustin  
James Guthmann  
Richard Haak  
Alice Hageman  
Dan Haley  
Jean E. Hall  
Cynthia Hamblett  
Lindsay Hamel  
Tom Hamilton  
Christina Handorff  
Michael Hanley  
Patrick Harold  
Kathleen Harrington  
Ann Harrington  
Ellen Harris  
Eric Harrold  
Jeanne Hart  
Peter Hayes  
Dorsy Hayes  
Brian Healy  
Coni Hebden  
James Heffernan  
David Hegarty  
Jeffrey Heidt  
John Henry  
Robert Henry  
Susan C. Hering  
Jose Hernandez  
David Herrick  
Richard Hiersteiner

---

## VOLUNTEER SPOTLIGHT

# Steve Harrold



Steve Harrold of Newburyport, MA has been the top fundraiser for the Ride to End ALZ New England for the last two years. As a cancer survivor, Steve appreciates that 90% of the funds raised from the Ride go directly to Alzheimer's and dementia research. "I owe

my successful battle with cancer to great advancements in cancer treatment made possible through science and funded research," he says. "Alzheimer's and dementia-related diseases are poised to be an even more significant public health issue in the future as we all continue to age and live longer. Now is the time to invest in research to drive prevention and treatment to meet the moment."

With a dear friend who just received an Alzheimer's diagnosis, Steve is grateful for all that the Alzheimer's Association offers. "The Alzheimer's Association is a strong, consistent voice for patients, families, caretakers, researchers, physicians, and legislators, to advance the goal of preventing and treating this terrible disease," he says. "I stand in awe of the strength of so many who work so hard and give so much of themselves to end Alzheimer's disease."

---

Hillis Family Foundation  
Michael Hoffman  
Jane Hoffman  
Stephanie Hoffmann  
Brian Hogan  
Dan Hogan  
Emily Holzman  
Steven Horowitz  
Linda Hottin  
Carla Howell  
Jennifer Hozempa  
Phillip Hsu

Karl R. Hudson  
Warren Hudson  
Julie Hughes  
Ruth Hurwitz  
Angelo Ingaharro  
Brayden Iturrondo  
Martha Izzi  
Michael Jabuka  
Barry Jacobson  
Tara Jalbert  
Anita Jamieson  
Mimi Jigarjian

Jean Morse Jones  
Ryan Jordan  
John Joseph  
Colby Junge  
Sally & James Kaloyanides  
Jody Kaminsky  
Vallop Kanjanapone  
Peter Kapinos  
Zaven Kaprielian  
Jill & Stephen Karp  
Russell Kassatly  
Marc Katz  
Bernard Katz  
Karen Kearns  
Hilary Keates  
William Keegan  
Steven Kelly  
William F. Kennedy  
Christopher Kennedy  
Joseph T. Kenney  
Richard Kenney  
Zeus Kerravala  
Kevin F. Kiley  
Bradford Kimball  
Brian King  
Linda & Jeffrey King  
Brian Kinney  
Joyce Ann Kirk  
Myra Klahr  
Micah Knapp  
Gayle Koehler  
Curtis Koger  
Scott Kokones  
Katie Korngold  
Christine Korsgaard  
Claire Kovacs  
Charles Kozubal  
Paul Kraft  
Josh Kraft  
Karen Krag & Joel Schwartz  
Kathryn Kraus  
Randy Krauss  
Jeanne K. Krieger  
David Krivelow  
Dirk Kuyper  
Kerry Lafleur  
Joseph Lafratta  
Phillip Lakin  
Marcia & Paul Lambert  
Cheryl Landry  
Robert Lankford



Bianca Lapham  
Josee Laplante & John Lynch  
Richard Larowe  
Nancy Larrabee  
Susan Lausier  
Elaine Lavoie  
James Lawrie  
Judy Lawson  
Matthew Leary  
John Leathers  
Donna LeBlanc  
Dr. Cynthia A Lemere  
Eileen Lennon  
Ruth Leo  
John J. Lepore  
Christine D. Leslie  
Margarita & Brian Lessard  
Nina Lessing  
Stacey Lester  
Richard Leventhal  
Adam Leventhal  
Barbara & Bob Levine  
Lauren Levine  
Kenneth Levis  
Valerie Levy  
Ben Lewis  
Jackie Lewis  
Ellen Light  
Donald Little  
Joie Liu  
Jay Locke  
Larry Longo  
James Longo  
Mary Loughlin  
Brian Loughran  
Lisa Louis  
David Lubin  
Chris Ludwig  
Sheila Lukehart  
Nancy Lukitsh  
Yvette Luyten  
Lori Luzzo  
Blair Lyne  
Patrick Maccurtain  
Anne MacDonald  
Jan Machnik  
Deborah & William Maclachlan  
Duncan Macqueen  
Joe Mamayek  
Christina Madaus  
Kenneth Madden

Emily Magrosky  
Jennifer Maher  
Joe Mahoney  
Shelagh Mahoney  
Maryann Mahood  
Rodd Malitsky  
David Mallon  
Lauren Malone  
Gordon Mandeville  
Kathleen Manna  
Rick Manuels  
Olivia Marasca  
Kristine Marbourg  
Barry Margolin  
Jane Martin

Tina Martin  
Charlotte Martin  
Crista Martinez Padua  
Kelsey Martins  
Ian Martins  
Jean Massa  
Eric Masterson  
Charles Mayhew  
Ann Maysek  
Karen Mazer  
Deborah Mazza-Scanlon  
Marty Mazzella  
Thomas G. Mcauliffe  
Catherine Mcbrine  
Paul McCabe

---

## VOLUNTEER SPOTLIGHT

# John Ziemba

I lost my wife, Lorrie, to Alzheimer's in November 2022. I had the privilege of being her primary caregiver and was able to fulfill her wishes by keeping her at home through the final chapter of her life. The Alzheimer's Association was instrumental during that time—offering guidance,



information, and support when I needed it most.

In the spring of 2023, I began getting involved with the Alzheimer's Association. Initially, I hoped that sharing just a page or two of our story might help move legislation to benefit those suffering from this disease, as well as the caregivers who walk alongside them. What I didn't expect was how much the Alzheimer's Association—and the people I've met through it—would help me in my own time of grief.

I've come to see even more clearly just how blessed I've been: to have married my high school sweetheart, and to have kept that vow—till death do us part. The Alzheimer's Association has reminded me of that blessing. And I am grateful.

Jeanne F McCann  
Elizabeth McCarron  
Claire McCarthy  
Gerald McCue  
Meghan McDonald  
A.J. McDonald  
Ross McDonald  
Kathleen D. McFadden  
Franklin McFarlan  
David McGinley  
Laura McGonagle  
Mary Ann McGrain  
Amanda McGovern  
Jeffrey Mcharg  
John L. Mchugh Foundation  
Marybeth Mcinnis  
Rachelle Mckay

Greg Eric Mckechnie  
Anne Mckenna  
James Mckeone  
Dr. Donald G. McLaren  
Richard McLaughry  
Julie McLaughlin  
Colleen McLaughlin  
John Mcmanama  
Mackenzie Mcpike  
Raymond Medeiros  
Maureen Meech  
James Meehan  
Jennifer Mehigan  
Lynn Meldock  
Raquel Mello  
Lynn Meltzer  
Diane Merrick

Michael Merrigan  
Paul Merrill  
Mary Katherine Metcalfe  
Bradley Michael Meyer  
Giancarlo Micozzi  
Joanie P. Middleton  
Linda Miller  
Kim Milliken  
Meridith Mitchell  
Tom Mleczo  
AJ Mleczo Griswold  
Debra Moll  
Tamara Monesmith  
Leonard Monfredo  
Hector R. Montesino  
Nora E. Moreno Cargie  
Mark Morrison  
Steven Moskowitz  
Richard Moussette  
Timothy Moynihan  
Matthew Mozur  
Charles Mraz  
Lynne Mucciarone  
Patrick Mullin  
Mary Mullin  
Kathy Mumma  
James Munkres  
Steve Murphy  
Michael Murphy  
Mary Ann Murphy  
Maureen Murphy  
Carolyn Murray  
Maureen Murray  
Sean Murray  
Amy C. Naimi  
Ken A. Najarian  
Daniel Najarian  
Deborah Lynn Nall  
Christine Nash  
Tim Nash  
Frank Neely  
Maura Neely  
Jim Negro  
Karen Nestor  
Diane Neuse  
Nancy Newman  
Stuart Newman  
Katharine Nicholson  
John Niewola  
John Noonan  
Emmy Norris

---

## VOLUNTEER SPOTLIGHT

# Shirley Conway



Shirley Conway has spent a lot of time in the world of Alzheimer's and dementia, both as a Gerontological Registered Nurse, and as a caregiver for her father. Once she retired, she channeled her passion for educating professionals, individuals and families experiencing Alzheimer's

into a new purpose: volunteering as a community educator, delivering the same programs that she had utilized both personally and professionally. "Over the last several years, volunteering with the MAVNH Chapter has been extremely rewarding—I know that I have helped many who are facing dementia, and I am supported by fabulous leaders who share my passion," she says. "As the foremost organization addressing the dementia knowledge gap, as well as the leader in research to find a cure, I am proud to offer Alzheimer's Association programs in varied settings and to facilitate collaborative partnerships with other organizations."

---

David Nuss  
Stephen O'Brien  
Patricia O'Brien  
Matthew P O'Connor  
Vania O'Connor  
Robert O'Connor  
Marlene O'Donnell  
Mary Jane O'Donnell  
Bill O'Malley  
Ann Oaks  
Nicole O'Callaghan  
Ellen O'Connell  
Francis Odette  
William Oldfield  
Harold Ollin  
Dave Olson  
Dale Oneill  
Robert Ortense  
Julie Ostrander  
David Overmyer  
Molly Palmacci  
Jennifer Papay  
Denise Parent  
John Pariseau  
David Pascucci  
Tom Pasquarella  
Nikita Patel  
Sue Patterson  
Richard Patterson  
Susan Pederzani  
Arthur Peisner  
Michelle Pelham  
Jennifer Peppe  
Yehuda Pepper  
Susan Pereira  
Christopher Pereira  
Abigail Perry  
Michael Perusse  
Gail Peterson  
Chris Petty  
John Pfeiffer  
Anna B. Pier  
Thomas Pierce  
Richard Piltch  
Deborah Pinho  
Dianne Pink  
Christine Plette  
Brian Poirier  
Kevin Pojasek  
Klaus Polttila  
Alan Popp

Kevin Potter  
Charles Pratt  
Patricia Preziosa  
Melissa & Jonathan Price  
Robert Quinn  
David Quint  
Richard Raczkowski  
Jason Rae  
Andrew Ralich  
Jennifer Ramsey  
James Rao  
Judith Rauchwarger  
Azim Rawji  
Daniel Ray  
Caroline Razzaboni  
Ken Read-Brown  
Diana Reeves  
Thomas Remillard  
Virginia & Janet Reppucci  
Kevin Reynolds  
Mike Reynaert  
Travis Rhodes  
Diane M Riccio  
Chris Rice  
Jenna Rice  
Ann T. Riley  
Denis Ritchie  
Sheila Rittenberg  
William Rivell  
Julie Rivers  
Robbins Nest Foundation  
Todd Robertson  
Marjorie Roche  
Rick E. Roche, Jr.  
Anne Romney  
Timothy Rooney  
Charles Roover  
David Roover  
Ruth Roper  
Becky & Robert Rosenbaum  
Bruce Rosen  
Sydell Rosen  
Benjamin Rosenkranz  
Adrienne & Andy Ross  
Richard Rossi  
Carl Rubin  
Wade Rubinstein  
Mike Ruby  
Lissa Rudnick  
James Russell  
Gregory Rutledge

Mary & John Ryan  
Bruce I. Sachs  
Janie Salani  
Ali R. Salehi  
Jon Saltonstall  
Maurice Samuels  
Frank Sandy  
Domenic Sanfilippo  
John Santos  
Joe Saueressig  
Christine Savage  
Charles Sawyer  
Stephanie Sawyer  
David Scarbro  
Mary Scarlata-Rowe  
Michael Schaefer  
Michael Scheer  
Steve Scherneck  
Glen Schneider  
Ron Schneider  
Peter Schortmann  
Kathryn Schrock  
Carrie Schroen  
Judith Schumacher  
Sandra Schumacher  
Katherine Scott  
Sarah Scott  
Paul Scully  
Pamela Sedler  
Charles Senatore  
Sheara & Jeffrey Seigal  
William Shaffer  
Barbara W. Shapiro  
Eric Sharp  
Brenda Sharton  
Thomas Sheehan  
Colleen & John Sheehy  
Sherbrooke Family  
Ken R. Shulman  
Craig Shurtleff  
Elsa & Stanley Sidel  
Samy Sidhom  
Joyce Sielewicz  
Richard Singer  
Keomanikhone Sitthirath  
Patricia Skilling  
Allison Skinner  
Stephen Skinner  
Amy Slavik  
Charles Slife  
John Slyconish



---



---

## CORPORATE SPOTLIGHT

# Lantheus



Cheryl Ball was drawn to this work for deeply personal reasons. Two years ago, after countless signs and ruling out other causes, her father, Dave, was diagnosed with Alzheimer's. "Watching the disease strip my father of the characteristics that make him unique and wonderful has been devastating," she says. "His battle fueled my determination to support others impacted by this disease." Sadly, Cheryl's dad has since passed away, making this work even more personal. Cheryl's company, Lantheus, has now jumped on board as a corporate partner of the MA/NH Chapter. "Partnering with the Alzheimer's Association was a natural choice because their mission aligns with our purpose to find and follow diseases like Alzheimer's to deliver better patient outcomes," she says. Lantheus donated the proceeds from their 30th Annual Golf Tournament to the Association (see page 12), and they served as the Promise Garden Sponsor at the 2025 Greater Boston Walk to End Alzheimer's. But that is just the beginning. "The Alzheimer's Association is a true partner that provides resources and a sense of belonging when families need it most," she says. "We're only getting started."

Elizabeth Spiller  
Molly Spindler  
Bernadine Spivey  
Charles Spurr  
John Spurr  
Lisa Stagner  
Cynthia Stanitis-Dade  
Kurt Steele  
Sharon Stehman  
Carol Steinman  
Campbell Steward  
Nancy Stewart  
Jessica Stout  
Greg Stpierre  
Susan & Jeremy Strong  
Paul Stuka  
Ellen Sturtevant  
Miriam Stutman  
Krystina Stykowski  
Leanne Sullivan  
John Sullivan  
Joanne Sullivan  
Christine Sullivan  
Sheryl Swankin  
Jodi Sweeney  
Kathryn Sweeney  
Ashlee Sypek  
Tim Sypko  
Shawn Szturma  
Kyle Tager  
Lillian Tam  
Eliza Tan  
Carolyn Taranto  
Peter Tardie  
Matthew Taylor  
Thomas Taylor  
John Teal  
Elaine Teeters  
Molly Teets  
John Tegan  
Pete Thatch  
The Charles Robert Gens Foundation  
The David & Philippa Zelman  
Family Foundation  
The Paul & Edith Babson Foundation  
The Schwarzkopf Family Foundation  
Elizabeth Theran  
David Therrien  
Barbara & Greg Thompson  
Matthew Tiano  
Michaune Tillman

Katie Smith  
Donna Smith  
Gerard Smith  
Michael Smith  
Peter Smith  
Gil Solomon

John Sotir  
Renee Soucy  
Michael Speciner  
Richard Spellman  
Lee Spence  
Marilyn Spencer

Jane Timken  
Joanne Tinmouth  
Jake Toomey  
Steve Torres  
Christian Tosi  
Kevin Tow  
Melinda Treadwell  
Maria Trevisan  
Christine Triessl  
Bill Triessl  
Tony Troilo  
Peter Troost  
Bruce Trull  
Gloria Tsai  
Kathy Ann Tucker  
John Tucker  
Will Turani  
Richard D. Urell  
Roger N. Urell  
Jeff Urquhart  
Dave Usher  
Camille Valentine  
Ed Venckauskas  
Jennifer Vey  
David Vidoni  
Desirree Vierra  
Gina Vigliotta-Reece  
Mark Vila  
Hollis Von  
Cai Von Rumohr  
Keri Wagner  
Karen Wakefield  
David Walde  
Helena Walker  
Amanda Walker  
Richard Wallis  
Karen Walsh  
Brendan Walsh  
Peter Walter  
William Waters  
Joan Waters  
Steven Webb  
Ann Webster  
Brenda Weinstein  
Anne Weiss  
Donna M. Weiss  
Patrick Welch  
Kent Weldon  
Tobias Welo  
Kristie-Lee Wendler  
Susan Goodman & Jim Wessler

Garret Weston  
Lauren Whatley  
Meg & Michael Whitlock  
Daniel White  
Jennifer White  
Bill Wightman  
William Wilder  
Valeri Williams  
Tina Wilson  
Margaret Wilson  
Ann Marie Worth

Fen Wu  
Elizabeth Wuori  
Patricia Yates  
Richard Yieh  
Susan Zawalich  
Margaret Ziering  
Deborah Zolna  
Kim Zook

---

## VOLUNTEER SPOTLIGHT

# Alana Barrett

Alana Barrett supports the Alzheimer's Association in honor of her Mom, Vanessa, who is living with Alzheimer's disease. She has run the Boston Marathon and participated in 48 Peaks, and is committed to the Association and its mission. "I first got involved because I was seeking connection,



community and a way to meet others who truly understood the emotional and practical challenges of loving someone with Alzheimer's. Over time, my involvement has grown into a passion," she says. Alana credits the Association with getting her family through the challenges that the disease often brings. "The Alzheimer's Association has been nothing short of a lifeline for me and my family. From offering resources and education to creating a network of support, they've helped me navigate a devastating and confusing disease." Alana plans to continue her fundraising in tribute to her mom, who she describes as her best friend and role model. "I've learned how powerful community can be when we come together for a shared cause. Most importantly, it has allowed me to channel my grief into action, transforming love for my mom into something that can help others."

---

**O**ur Team End ALZ program offers the opportunity to participate in the historic Boston Marathon® as a proud member of the Bank of America Boston Marathon Official Charity Program, as well as the Asics Falmouth Road Race, a Cape Cod summer tradition. Team End ALZ athletes run in honor of loved ones with the mission of bringing us one mile closer to a cure for Alzheimer's and all other dementia.

Our 40 Boston Marathon runners enjoyed perfect weather this past Patriots Day and crossed the famous finish line on Boylston Street on April 21st! This small but mighty team raised an impressive \$551,850! Our Falmouth Road Race runners completed the 7-mile race on Cape Cod on August 17th in hot and humid salty air!. Our team of 61 runners raised over \$209,000 for our chapter, a new fundraising record for this team!

We continue to be inspired by our Team End ALZ athletes, training through the coldest of winter mornings or stickiest of summer days all while fundraising to significant levels. In 2025, 101 runners raised over \$761,000 and we could not be more proud and thankful for their leadership and passion to support our mission.



## TEAM END ALZ TOP PARTICIPANTS

### \$70,000+

Danielle Vargo

### \$25,000+

Amy Drelick  
Marlene O'Donnell

### \$20,000+

Alana Barrett  
Matt O'Connor

### \$15,000+

Maggie Chiappetta-Uberti  
Drew Curtis  
Neil Doherty  
Debbie Early  
Eric Feldhake  
Donna Lajoie

Kathy Mumma  
Erik Strzempko  
Lewis Wheeler

### \$10,000+

Jillian Lyons  
Ashlee Sypek  
Emily Ball  
Andrew DeAngelo  
Jaimie Donaghey  
Jenny Hallstroem  
John Hartnett  
Brian Howell  
Jane Lizotte  
Doug MacLean  
Jennifer Maher  
Sarah McKeen Wessel  
MaryKate Nelligan

David Olson  
Martin Squier  
Jessica Stout

### \$5,000+

Devon Angelini  
Tory Barton  
Melanie Carroll  
Mike Carroll  
Ryan Collins  
Chris Connery  
Grace Levin  
Lauren Malone  
Colleen McLaughlin  
David Theran  
Jake Toomey  
Lili Zhang





## \$2,500+

David Arkowitz  
Steven Blais  
Erin Bryan  
Billy Coakley  
Mary Lou Coakley  
Paul Coakley  
Amy Conley  
Victoria Cronin  
Molly Dion  
Johnny DiRe  
Rachel Dunn  
Katie Fitzgerald  
Bobby Fitzpatrick  
Deb Fitzpatrick  
Jackie Fitzpatrick  
James Fitzpatrick  
Michael Fitzpatrick

Marie Hardiman  
Jim Hughes  
Jillian Kelly  
Julia Kermond  
Lorraine Kermond  
Michael McNally  
Jillian Parrelli  
Melody Smith  
Jenna Vona  
Luke Welch  
Gayle Wholley

## \$1,500+

Nolan Anderson  
George Barton  
Jaclyn Bown Lavers  
Kelly Clinton  
Isabelle Deinstadt

Cassidy Dekreon  
Dave DeStefano  
Helice Gillis  
Marissa Gordon  
Ryan Hatfield  
Erika Hayes  
Richard Hjulstrom  
Mikayla Kennedy  
Scott Kennedy  
Sarah Livingston  
Safdar Medina  
Alissa Milewski  
Edward Miller  
Allie O'Hara  
Aaron Perlroth  
Catherine Putney  
Trina Riley  
Larissa Siedzik  
Tim Wessel

**The Ride to End ALZ New England is the Alzheimer's Association's newest million-dollar event! Congratulations and thank you to all our riders and volunteers for their continued support and dedication to reaching this significant achievement!**

The Ride to End ALZ New England is a fully-supported cycling event in June, offering 100-, 62- or 30-mile scenic

coastal routes, starting and finishing at Hampton Beach State Park in Hampton, NH. This year marked the 29th annual Ride and it was a day for the record books! On June 14, 509 riders on 94 teams joined together for an inspiring, albeit soggy, day of cycling to support Alzheimer's research. Through picturesque New England towns and more than a dozen miles of coastal views, riders kept the momentum going through the rain and celebrated at the finish line

with a barbecue, live music and refreshing dips in the ocean! The Ride also had 70 virtual cyclists hit the roads, trails, and paths in their local communities. Together, 579 riders and more than 125 volunteers raised \$1,041,604, making this the highest fundraising year in the history of the event, and surpassing the \$1 million milestone for the first time!

*90% of all proceeds raised directly support research for further treatments and, ultimately, a cure*



## TOP FUNDRAISING TEAMS

**\$50,000+**

Team M.O.M.  
Team Purple

**\$25,000+**

Cutters  
North Shore Cyclists  
Sully's Buddies  
Team Noonan/Barbato

**\$20,000+**

North Shore Cyclists  
Team Be Good

**\$15,000+**

P.O.P. Ryders  
Robbin's Riders

**\$10,000+**

Grampy & Nana's Riders  
Linda's Legion  
Men's Caregiver Group  
Michelle's Gang  
Midlife Crisis and JC&A  
Papa's Weasels  
Relax & Smile  
Team Bike-A-Soreass

**\$5,000+**

A Ride Down Memory Lane  
Bellicchi's Classic Biscotti

City Cyclists  
Don's Riders  
Mary Rita  
Memento  
Memory Lane Riders  
MIT Lincoln Laboratory  
New England Clean Energy Inc.  
Over the Hill Gang  
Pedaling for a Cure  
PR Riders  
Shirley's Meatballs  
Sisters Journey to Remember  
Team Eisai  
Team Hope  
Vidz Kidz  
Wessler's Wheels





## TOP FUNDRAISING INDIVIDUALS

### \$50,000+

Steven Harrold

### \$25,000+

Michael Dern

### \$15,000+

Robbin Price  
Anne Romney

### \$10,000+

Rita Cramer  
Patrick Hatch  
Kurt Hudson  
Bernice Kuca  
Paul Kussell  
Bob Ryan

### \$5,000+

Larry Alford  
Kevin Chapman  
Michael Crowther  
Alex Desrochers  
Andrew Dunberg  
Michelle Goodwin  
Meghan Hatch  
Tom Keegan  
Andy Kindig  
Randy Krauss  
Scott MacDonald  
Stacey Marshall-Williams  
Doug McCartney  
Alistair McKnight  
Mark O'Brien

Andrew Rabinowitz  
Mark Sheridan  
Paul Sullivan

### \$2,500+

Bill Allen  
John Antonelli  
Kathleen Bellicchi  
Joel Berman  
Jon Bicknell  
Gregory Boudreau  
Joshua Bowman  
Kelly Boyne  
Judith Cahill  
Joseph Carey  
Andrew Clark  
Susan Crawford  
Kenneth Crooks  
David Desrochers  
Helen Desrochers  
Sheila Doherty  
Tom Durkin  
Daniel Ellowitz  
Jack Faer  
Kathleen Fitzpatrick  
Jonathan Forman  
Paul Geary  
Natali Gingrasfield  
Shelley Goldfarb  
Dan Green  
Daniel Hatch  
Lisa Ikerd  
Vanessa Iorlano  
John Isaac  
Jim Kelley

Jeff King  
Gary Koeppel  
Annette Kokubo  
Doug Levy  
Anne-Marie McCormick  
Leah McGinley  
Kevin Monk  
Elise Morgan  
Melissa Mullaney  
Jeff Myer  
Ellen O'Connell  
Patrick O'Malley  
Jennifer O'Sullivan  
Henrik Owenmark  
Lauren Owenmark  
Keren Paquette  
Jeffrey Paquette  
Grafton Pease  
Thomas Reid  
Susan Richardson  
Marie Roy  
Glen Sargent  
Cheryl Schmidt  
Thomas Sheehan  
Ken Shulman  
Peter Stokloza  
Kathy Tucker  
Jill Vooyo  
Jeff Wagner  
Andy Weltman  
Jay Welz  
James Wessler  
Ann Whaley-Tobin  
Gina Whipple



**The Longest Day is the signature do-it-yourself fundraising event for the Alzheimer's Association, providing participants the opportunity and resources to host their own fundraising event with friends and family, or to participate in an activity they love to honor someone they love affected by dementia.**

On the longest day of the year—the summer solstice—we collectively honor those facing dementia, remember those we've lost, and celebrate our year-round efforts to raise vital funding and awareness to support our mission. This year, 296 events and activities took place across the chapter, **raising over \$1,316,000**, our most successful year yet! We proudly continue to lead

the country as the top fundraising chapter for the 14th year in a row. We could not be more proud and grateful for this amazing community and the impact being made on our mission. From hiking, kayaking, motorcycle rides, pickleball, water balloon fights, fishing, beach yoga, barbecues, bake sales, yard sales, cornhole tournaments, auctions and so much more, we sincerely appreciate the passion, creativity and dedication of our Longest Day participants.

Our **48 Peaks** hikers once again turned the White Mountains purple by climbing the 48 4,000-footers of New Hampshire as part of The Longest Day event. This year over 387 hikers on 115 teams raised over \$214,000!



## TOP FUNDRAISING TEAMS & GROUPS

### \$450,000+

Bluefin Blowout  
(team ranked #1 nationally)

### \$250,000+

The Washburn Challenge  
(group ranked #3 nationally)

### \$200,000+

48 Peaks  
(group ranked #6 nationally)

### \$25,000+

Bruyettes to END ALZ  
Order of the Eastern Star, Grand -  
Chapter of Massachusetts  
SISU  
Team Sarah to END ALZ  
Washburn Founders to END ALZ

### \$15,000+

A Family Affair  
Acing Alzheimer's  
Best Paddler's in Town (BPIT)  
BNY Wealth  
Cape Cod Alzstars  
Lexington Goes Purple  
NH Hot DogZ for ALZ  
UBS: The BPIT to End ALZ

### \$10,000+

FTI MA  
Good Kids Ending ALZ  
Pub Cup Challenge

Sally's Resathon  
Team Charter of Danvers  
The Buonopane Girls

### \$5,000+

Barnstable Pickleball  
Bay Riders to End ALZ  
Cape Squad to END ALZ  
Care Managers for a Cause  
DiVito Realty  
Duffy Team  
Go Sy Go  
Holly Badgers  
Kick Alz in the Balz  
Longest Day Superfans  
Mah Jongg for Memories  
Worcester and Dover  
O'Maras to END ALZ  
Sanfilippo Family  
Shack Pack  
Snail Pace for 50 First Dates  
Steve King  
Team Jack  
Team Needham Bank  
The Bluff Gang to END ALZ  
The Rowers  
Turtles to End ALZ  
Wilderness Wanderers

### \$2,500+

4K4Carolina  
Adventures with Floki  
Avita of Newburyport  
Bluebird Summit H1Kers

Crawford Nachos  
Harry's Hike  
Italian Social Club Alzheimer's  
Bocce Tournament  
Journey Before Destination (EMS)  
Kar's Crew to End ALZ  
Langdon Place of Nashua  
Larry the Log  
Laurie & Polly's English Channel Swim  
Luv On A Mountain  
Mahj Charge!  
McAbee & Woods, Merrill Lynch  
Wealth Management  
Meng's Memories  
Papa's Pals  
Plaques and Tangles/Roots and Rocks  
Powerback Rehab To You  
Purple Riders and Kayakers  
SLASR Podcast 48 Peaks Team  
Sum(m)it Up  
Team Harrington  
Team RunRaisers  
Team Wachusett  
The Algebra Queen  
The Cottages of Dartmouth  
The Lightkeepers  
The Lucky Ones  
The Renny Classic  
The Ride for DAD  
Trail Trodders  
Unconditional Adventurers  
Unstoppable Dedham Dynamites  
WanderNH  
Wellfleet Kettle Ponds & Beach Relay





---

## SOLSTICE CHAMPIONS

Individuals who raised \$1,600+ representing the 16 hours of daylight on the summer solstice.

### \$30,000+

Stuart McLeod

### \$15,000+

Molly Ross  
Jonathan Squitieri

### \$10,000+

Michael Curran  
Catherine Daley  
John Hughes

### \$5,000+

Joseph Aceto  
Lydia Borenstein  
Laura Buonopane  
Jennifer Chamberlain  
Scott Forler  
Stephen King  
Paul Lamarre  
Lynn Meltzer  
Gwen Morgan  
Alison & James O'Mara  
Nicholas Pappas  
Samuel Paul  
Jennifer Pilcher  
Domenic Sanfilippo  
Kit Schlosky

Patty Smith  
Bill Stewart  
Andrew & Ginny Wright

### \$1,600+

Andy Alcosser  
Jennifer Ashworth  
Bob Bergin  
Chris Bignell  
Alana Bresnahan  
Susan Brienza Gordon  
Meghan Brookes  
David & Shari Ly Brown  
David Brown  
Kai C.  
Andrea Carey  
Lorraine & Lionel Carle  
Ben Carlson  
Laurie Craigen  
Linda Daichman  
Spencer Dow  
James Ducey  
Bob & Dawn Dumais  
Gregory Durbin  
Linda Durbin  
Claudia Eaton  
Andy Eick  
Judy Eide

Jennifer French  
Martha Gangemi  
Tiffany Giannato Deberardinis  
Sheri Glover  
Jessica Haroutunian  
Paul Harrington  
Cindy Hession  
Michelle Hirsch-Solis  
Jennifer Hoadley  
Joseph Jussaume  
Mandy Jarominski  
Cassandra Kenney  
Margie Kiley  
Michelle King  
Bernice Kuca  
Val & Pete Maio  
Casey Mckeen  
Karen McLeod  
Laurance Miller  
Adam Mintz  
Christine Morrissey  
Tandee Newman  
Avita of Newburyport  
Brittany O'Loughlin  
Claire O'Malley  
Mark Petronio  
PetronioKidsAndPlusOnes  
Melissa Puls  
Hadley Ramsay  
Joshua Riley  
Melissa Rushford  
Diane Santimore  
Darryl Solomon  
Kathleen Thomson  
Alison Thornton  
Stacey Urciuoli  
Deanna Vincent  
David Weigert  
Gregg Weiskerger  
Sylvia White  
Chris Wilson  
Jamie Wolfe  
Margaret Wong  
Mike Young









**T**his year, nearly 14,000 people joined our Walk to End Alzheimer's events in 13 locations throughout Massachusetts and New Hampshire. The Walk to End Alzheimer's is the world's largest event to raise awareness and funds for Alzheimer's care, support and research, and we are incredibly grateful to each participant, volunteer and sponsor who made this year a huge success. Together we raised an outstanding \$4,581,125!

## TEAMS \$20,000+

Clarks for a Cure  
 Dansfans  
 Deb Mazza-Scanlon  
 Family & Friends  
 Don't Stop Believing  
 Glorious Sandypants Strider  
 Greater Boston Walk Team for  
 Harvard Pilgrim Health Care  
 and Tufts Health Plan, Point  
 32Health Companies  
 Kirsten's Crusaders  
 Phyllis And Her Badass Gang  
 PwC Boston  
 Team Andy  
 Team Green Street  
 Team Kendal at Hanover

Team Yia Yia  
 The Residence at Silver Square  
 Worcester Walk Team for  
 Harvard Pilgrim Health Care  
 and Tufts Health Plan,  
 Point32Health companies

## TEAMS \$10,000-\$19,999

Adams Community Bank  
 Alnylam Pharmaceuticals  
 Andover Walk Team Page for  
 Harvard Pilgrim Health Care  
 and Tufts Health Plan,  
 Point32Health companies  
 Arbors Gives Back  
 Arline's Army



Atria Merrimack Place  
 Brightview Wakefield Warriors  
 Derick's Walkers  
 Elaine's Campaign  
 ESWA  
 Foxborough Walk Team for  
     Harvard Pilgrim Health Care  
     and Tufts Health Plan,  
     Point32Health companies  
 Grammie's Groupies  
 Hearts & Heroes  
 Hoffman's Hodgepodge  
 JHC on the Move  
 Joe's JEMs  
 Josie's Journey  
 Judy's Brigade  
 Kay's Krew  
 Lantheus  
 LCB Senior Living -  
     The Residence at Riverbend  
 LCCA Team Highlands on the Hill  
 L'chaim to Judi  
 Lori's Team  
 Marchin' with Mackie  
 Memory Fighters  
 MIT Lincoln Laboratory  
 Murphsminions  
 NAI Glickman Kovago & Jacobs  
 One Stop Liquors  
 Paula's Posse  
 Riverwoods  
 Seniors Helping Seniors of  
     Greater Boston & Metrowest  
 Sigma Kappa Delta Chapter  
 Spider's web  
 Team Bill  
 Team Donna Resten  
 Team Joba  
 Team Mary  
 Team MHB  
 Team Michelle  
 Team Stuka  
 Team Virginia  
 The Alzheimer's Avengers  
 The Forget-Me-Nots  
 The Memorables  
 The Silver Foxes & Seyfarth Boston  
 The Villagers  
 UKG  
 Upper Valley ROW to End ALZ

---

## VOLUNTEER SPOTLIGHT

# Zaven Kaprielian

Zaven Kaprielian is a  
 neuroscientist—but he was  
 also the primary caregiver  
 for his father, who had  
 dementia. He passed away in  
 2010. “I volunteer in honor  
 of my dad, and because I  
 want to be on the front  
 lines of the fight to rid  
 the world of Alzheimer’s  
 disease,” he says. “I view the



Association as the first line of defense against Alzheimer’s  
 and very much appreciate all that the Association has done  
 for me and my dad when he was fighting the disease, and  
 countless others.” Zaven wears many hats, serving on the  
 executive leadership committee of the Greater Boston  
 Walk to End Alzheimer’s, and becoming a new member of  
 the MA/NH Chapter’s Board of Directors. “I feel that I am  
 part of a team on a single-minded mission to rid the world  
 of Alzheimer’s and other dementias. Simply put, my work  
 with the Association has provided me with a true sense of  
 purpose in my life.”

---

## TEAMS

### \$5,000-\$9,999

AgeSpan Spirit  
 Aliada Therapeutics  
 American House  
 Artis of Reading  
 ASNCM Unforgettables  
 Autodesk Boston AWN  
 BEEP  
 Briarwood Continuing Care  
     Retirement Community  
 Bridges by EPOCH at Andover  
 Bridges of Lexington  
 Bridges of Sudbury  
 Bridges of Westwood  
 Captain Jack's Crew  
 Cathy's Cool Cats

Central NH Walk Team for  
     Harvard Pilgrim Health Care,  
     a Point32Health company  
 Charlie's Angels  
 Chatty Kathy's  
 Clancy Family  
 Clear Guidance  
 Concezio's Crusaders  
 Considine Crew  
 Cota's Crew  
 Courtney Family & Friends  
 Courtyard Strong  
 Cresa Partners Boston  
 David's Angels  
 Dedham Savings - Here for  
     the Journey  
 Deng Hillback Team



---

## VOLUNTEER SPOTLIGHT

# Paul Derrickson



Paul Derrickson's mother lived with Alzheimer's for nearly ten years, and his father-in-law also had the disease. He also experienced a close friend's battle with Younger-Onset Alzheimer's and supported his family throughout his illness. All of this pushed Paul into action.

"I began volunteering with

the Alzheimer's Association because I wanted to give more of my time to a meaningful cause, and the Association had been an incredible source of support during my mother's illness," he says. Paul delivers education programs, while also volunteering at the Association's Massachusetts Advocacy Day, and participating in the Walk to End Alzheimer's. "To me, the Alzheimer's Association represents compassion, hope, and support. It is an organization that steps in to help families during some of their most difficult moments, offering guidance and resources, all at no cost," he says. Paul is reaping the benefits as well. "After my community education presentations, my wife often says, 'your cup has been filled,' and she's right. I return from these events uplifted, having met wonderful people, shared empowering information, and helped others take steps toward healthier lives. There's truly nothing more rewarding than that."

---

Edward Jones Tabbouleh Express  
Edward Jones Team O.T.T.  
Every Mile a Memory  
Fall River Walk Team for Harvard  
Pilgrim Health Care and  
Tufts Health Plan,  
Point32Health companies  
Fitzy's Followers  
Forestdale Fighters  
Goal Getter End ALZ  
Good Memories

Gram's Gang  
Grandma Marie  
Great Minds  
Hebrew SeniorLife  
HX Angels  
Jack Conway, Realtor  
Katz's Kittens  
Laura's angels  
LCB Home Office- The Budding  
Wildflowers  
Leah's Village

Leen's Family Fighters  
Legacy Care Law Firm at DeBruyckere  
Law Offices  
Making Memories  
Manor On The Hill  
Martin Family  
Mazz's Making Memories  
Miles for Memories\*  
Mom's Memory Matters  
Nermal's Knuckleheads  
Newton Community  
Newton Senior Center  
Pepe's Parade  
Pete's Warriors  
Plymouth Walk Team for Harvard  
Pilgrim Health Care and Tufts  
Health Plan, Point32Health  
companies  
Point32Health colleague mini-golf  
tournament  
Radding Family  
Residence at Pearl Street  
Rita's Shamrocks  
SentinelCares  
Sheela Agarwal's Walk for  
Alzheimer's  
Sweet Gloria  
Team Barrows  
Team Borowski  
Team Bristol County Business  
Connect  
Team Burnett  
Team Dodds



Team Donohue  
 Team Feiner  
 Team Fink/Wassarman  
 Team John Hancock/Manulife  
 Team MCU  
 Team Mike  
 Team Nudge  
 Team Phil  
 Team Ryan  
 Team Safety Insurance  
 Team Sally Lou  
 Team Shawsheen  
 Team Thatcher  
 Team TJX3N  
 Team Tobes  
 Team Tose  
 Team Tracy  
 Team Wellington Management  
 The A(bbvie) Team  
 The Forget Me Nots NH  
 The Forget-Me-Not Kids  
 The Last Wave  
 The Loomis Communities  
 The Residence at Salem Woods  
 Traditions of Dedham  
 Tri Town Team  
 Truly Brule  
 Tucker's Troopers  
 Walk for the Weeze  
 Walt's WALK  
 Wine-Sense Andover  
 Woo Walkers



## VOLUNTEER SPOTLIGHT

# Rich Linton

Rich Linton's father-in-law was diagnosed with Alzheimer's in his late 70s. The last two to three years of his life were a difficult and stressful time, both for him and for those around him.

"As a family, we were not prepared for the devastating effects this disease has on those impacted, or the



caregivers and extended family," Rich says. Through his company, Empower, he was introduced to the Alzheimer's Association and *Hope on the Harbor*. "At my first *Hope on the Harbor* gala, I was impressed by the collective emotional energy in the room and the talent and leadership on display by the small but mighty Alzheimer's staff," he says. "As I became more involved, I found the depth and commitment of our volunteers to be a differentiator from other philanthropic organizations I had experienced." Rich now serves as a co-chair of the *Hope on the Harbor* Executive Leadership Committee and is a member of the MA/NH Chapter's Board of Directors. "The Alzheimer's Association is fighting for those in need. Not just the afflicted, but the ecosystem of caregivers, researchers, and medical professionals that work in this arena," he says. "And, If I'm being candid, I'm a bit competitive, so I like serving a mission where we can make an impact, put up some big numbers, and truly show progress."





## Massachusetts/New Hampshire Chapter

### **CHAPTER HEADQUARTERS:**

320 Nevada St, Suite 201  
Newton, MA 02460  
617.868.6718

### **24/7 HELPLINE**

800.272.3900  
[alz.org/MANH](https://www.alz.org/MANH)

### **CHAPTER OFFICES:**

#### **Central & Western Massachusetts**

100 N Parkway, Suite 105  
Worcester, MA 01605  
508.799.2386

#### **New Hampshire**

15 Constitution Drive, Suite 1G  
Bedford, NH 03110  
603.606.6590