

May 2025

Special Edition: 2025 Alzheimer's Disease Facts and Figures

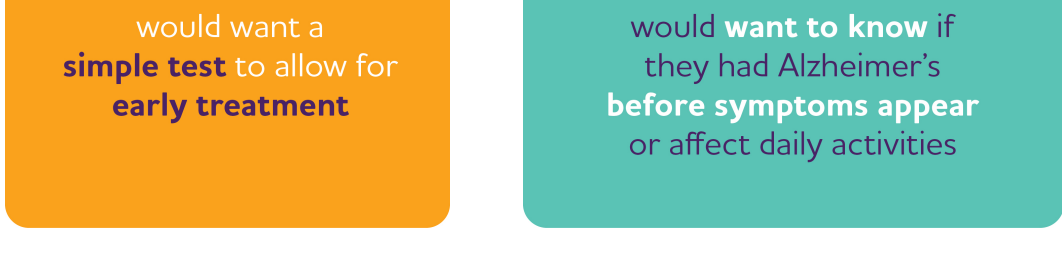
Last week, the Alzheimer's Association® released the 2025 [Alzheimer's Disease Facts and Figures](#), an annual report offering a comprehensive look at national and state-level trends in prevalence, mortality, cost of care and caregiving burden.

- ✓ [Special Report: American Perspectives on Early Detection of Alzheimer's Disease in the Era of Treatment](#)
- ✓ [Key Findings: Prevalence, cost, mortality and caregiver burden](#)
- ✓ [State Data: Key statistics detailing the impact of Alzheimer's in each state](#)
- ✓ [Tools for Action: HBI Road Map and BRFSS data to guide a public health response](#)



Special Report: American Perspectives on Early Detection of Alzheimer's Disease in the Era of Treatment

Early detection of chronic diseases is an essential public health goal. This year's *Alzheimer's Disease Facts and Figures* special report reveals that Americans support early detection of Alzheimer's. In a nationwide survey of adults age 45 and older, a majority of Americans want to know early if they have Alzheimer's, and want to have access to testing and treatment:



- Nearly 4 in 5 Americans (79%) would want to know if they had Alzheimer's disease before having symptoms or before symptoms interfere with daily activities
- 9 in 10 would take a simple test, such as a blood biomarker test, to enable early detection and early treatment
- 92% would be interested in taking a medication to slow disease progression

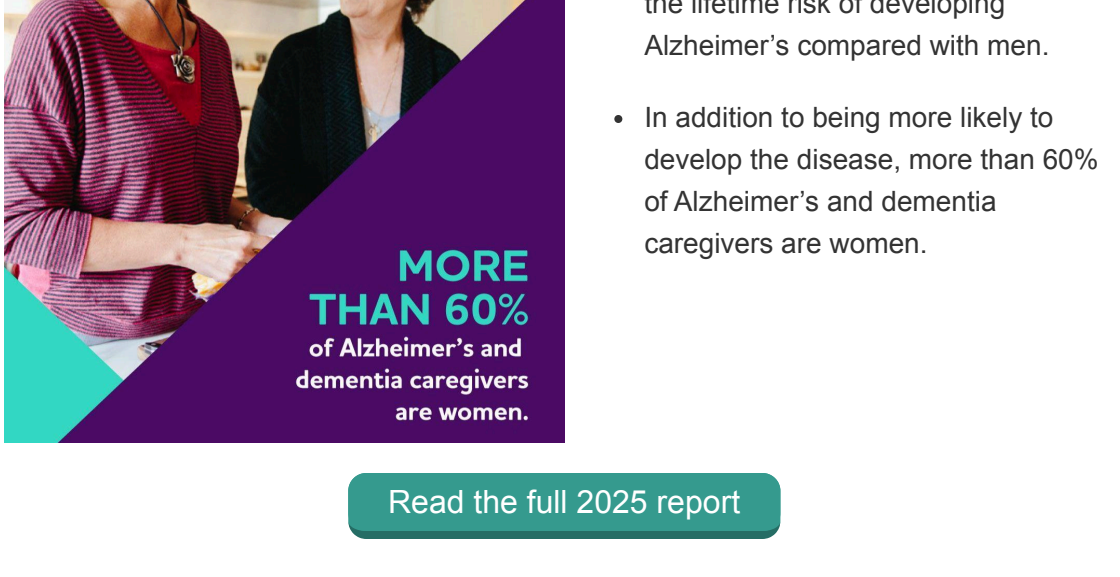
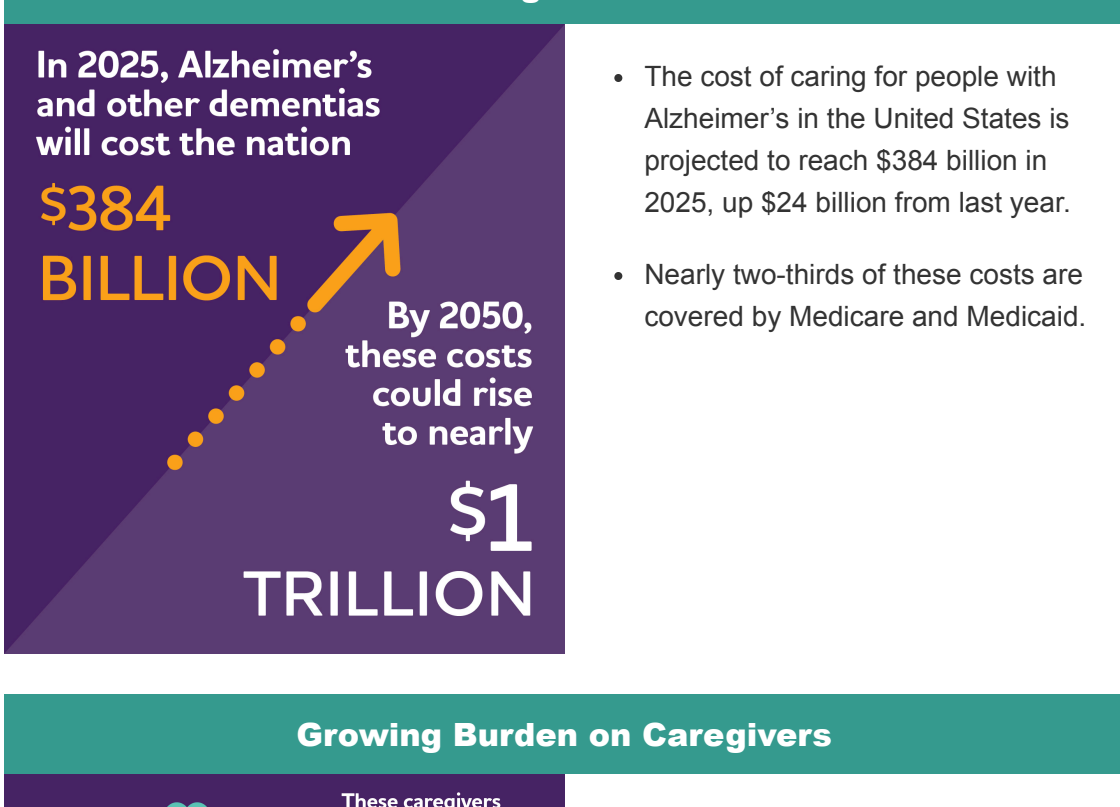
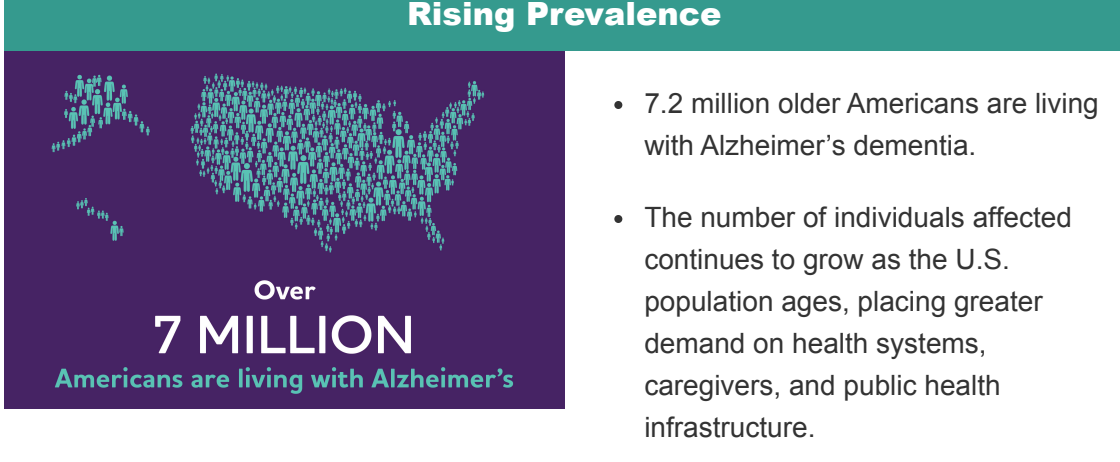
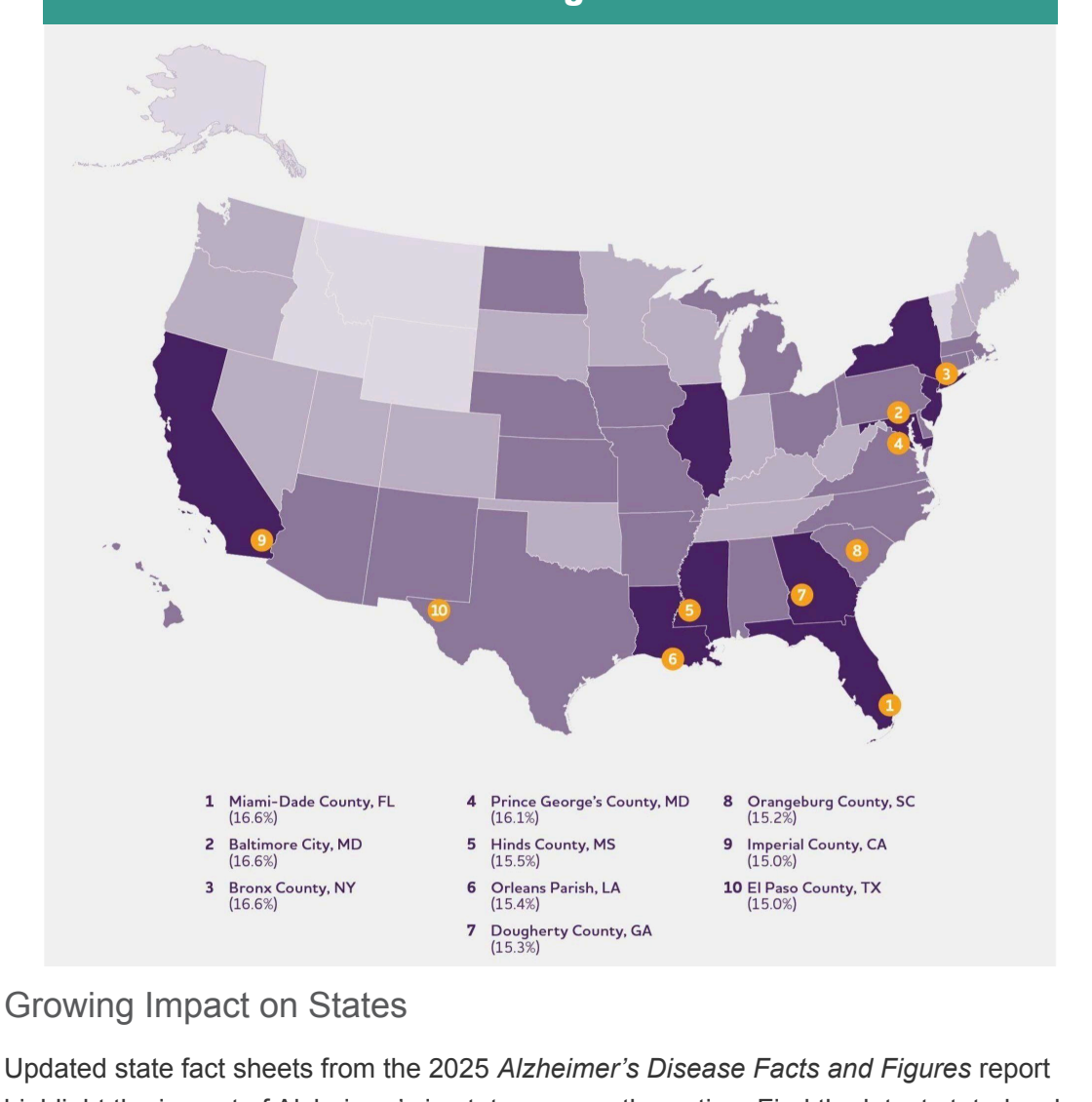
These findings were echoed in focus groups conducted by the Healthy Brain Initiative (HBI) at the Alzheimer's Association. Focus group participants overwhelmingly supported early-stage detection of dementia, before noticeable symptoms or when symptoms are only minor. Participants valued early detection for a variety of reasons including time for better planning and preparation, access to potential treatments and the ability to build a strong support network.

Participants also raised questions about potential disadvantages of an early diagnosis including medication access, affordability, efficacy and side effects. Insights like these emphasize the importance of a robust public health approach that prioritizes public awareness and health system readiness.

Nationwide, public health professionals can enhance early detection by improving access to diagnostic services, educating health care providers about cognitive assessment and engaging the public on the benefits of an early diagnosis. Learn how early detection fits within a public health approach at alz.org/earlydetection.

[Read the special report](#)

Key Findings: 2025 Alzheimer's Disease Facts and Figures


[Read the full 2025 report](#)


Growing Impact on States

Updated state fact sheets from the 2025 *Alzheimer's Disease Facts and Figures* report highlight the impact of Alzheimer's in states across the nation. Find the latest state-level statistics on Alzheimer's prevalence, dementia caregiving and costs to state Medicaid programs. These data help states better understand the impact of dementia on communities and can guide planning, resource allocation and setting of public health priorities.

[Find your state's data](#)

Turning Data Into Action: Tools to Guide a Public Health Response to Dementia

For over a decade, the HBI has partnered with state BRFSS coordinators to collect data on subjective cognitive decline (SCD) and dementia caregiving — critical indicators used in the *Facts and Figures* report. These data help public health leaders track trends, identify needs, and develop targeted interventions.

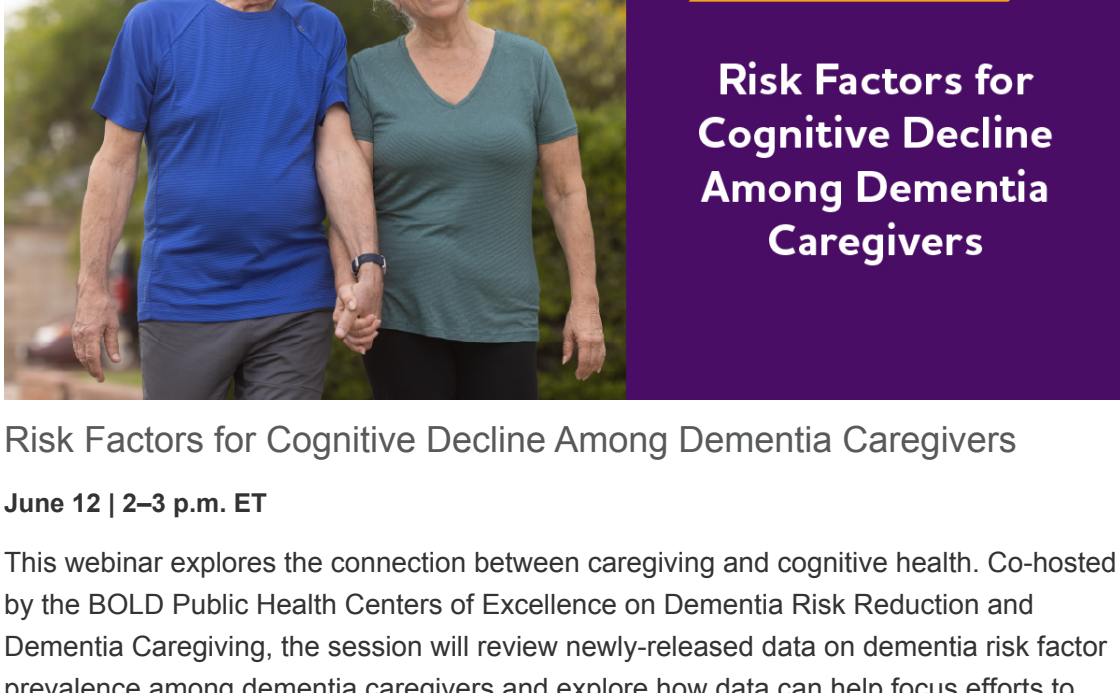
[Learn more](#)

As the burden of Alzheimer's grows, so does the opportunity for public health to lead. The *Healthy Brain Initiative Road Map for State and Local Public Health* provides actionable strategies across five key areas:

- **Risk Reduction** — Address modifiable factors to promote lifelong brain health
- **Early Detection and Diagnosis** — Support timely cognitive assessment, diagnosis and connection to care services
- **Caregiver Support** — Enhance systems that support unpaid caregivers
- **Community-Clinical Linkages** — Strengthen collaboration across systems
- **Health Equity** — Center attention to equity across dementia initiatives

[Explore the Road Map and Issue Maps](#)


Upcoming Webinars



Risk Factors for Cognitive Decline Among Dementia Caregivers

June 12 | 2–3 p.m. ET

This webinar explores the connection between caregiving and cognitive health. Co-hosted by the BOLD Public Health Centers of Excellence on Dementia Risk Reduction and Dementia Caregiving, the session will review newly-released data on dementia risk factor prevalence among dementia caregivers and explore how data can help focus efforts to address health and well-being among caregivers for people living with dementia.

[Register](#)

Get Started at alz.org/PublicHealth

HBI Road Map

State Resources and Data

10 Healthy Habits for Your Brain

HBI Road Map for AI/AN Peoples

Public Health and Dementia Curriculum

10 Early Signs of Alzheimer's

The Healthy Brain Initiative is supported by the Centers for Disease Control and Prevention of the U.S. Department of Health and Human Services (HHS) as part of a financial assistance award totaling \$14,229,665 with 100% funded by CDC/HHS. The contents are those of the author(s) and do not necessarily represent the official views of, nor an endorsement by, CDC/HHS, or the U.S. Government.

The Alzheimer's Association is the leading voluntary health organization in Alzheimer's care, support and research. Our mission is to lead the way to end Alzheimer's and all other dementia — by accelerating global research, driving risk reduction and early detection, and maximizing quality care and support. Our vision is a world without Alzheimer's and all other dementias®.

Alzheimer's Association National Office, 225 N. Michigan Ave., Fl. 17, Chicago, IL 60601 ©2021 Alzheimer's Association. All rights reserved. 800.272.3900 | alz.org Please add publichealth@alz.org to your address book to ensure you receive all future emails.

[View your email preferences or unsubscribe.](#)