

J-ADNI updates

July 2012 @AAIC

University of Tokyo
J-ADNI

Takeshi Iwatsubo

Japanese ADNI (1st phase)

•6-year study (2007-2012)

•38 clinical sites

•600 subjects

543 cases enrolled

3072 visits completed

•1.5T MRI

(3D MPRAGE, ADNI phantom)

•PET

---FDG ~67%

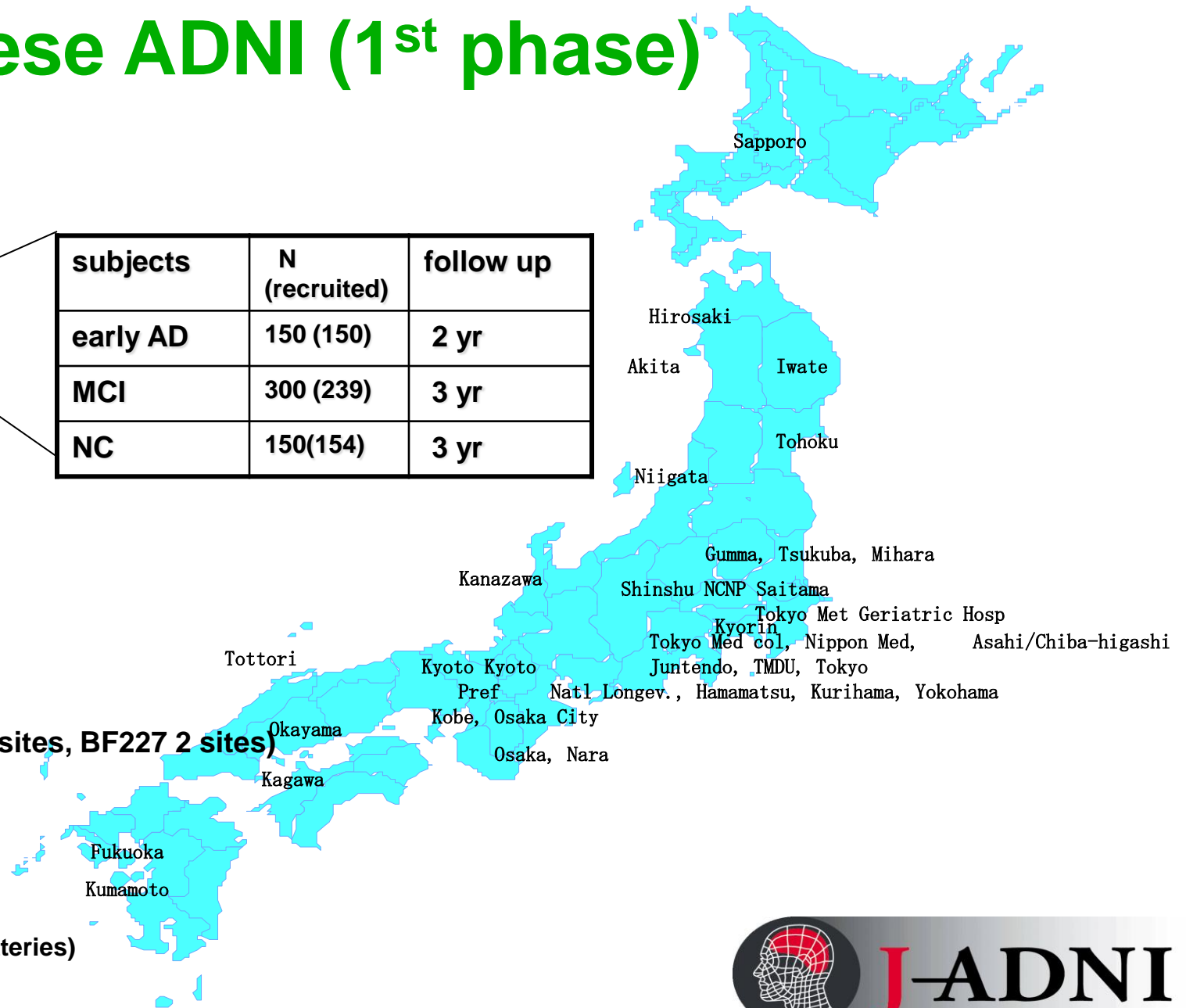
---amyloid ~42% (PIB 16 sites, BF227 2 sites)

•Blood + apoE (100%)

•CSF ~40%

•Clinical (14 compatible test batteries)

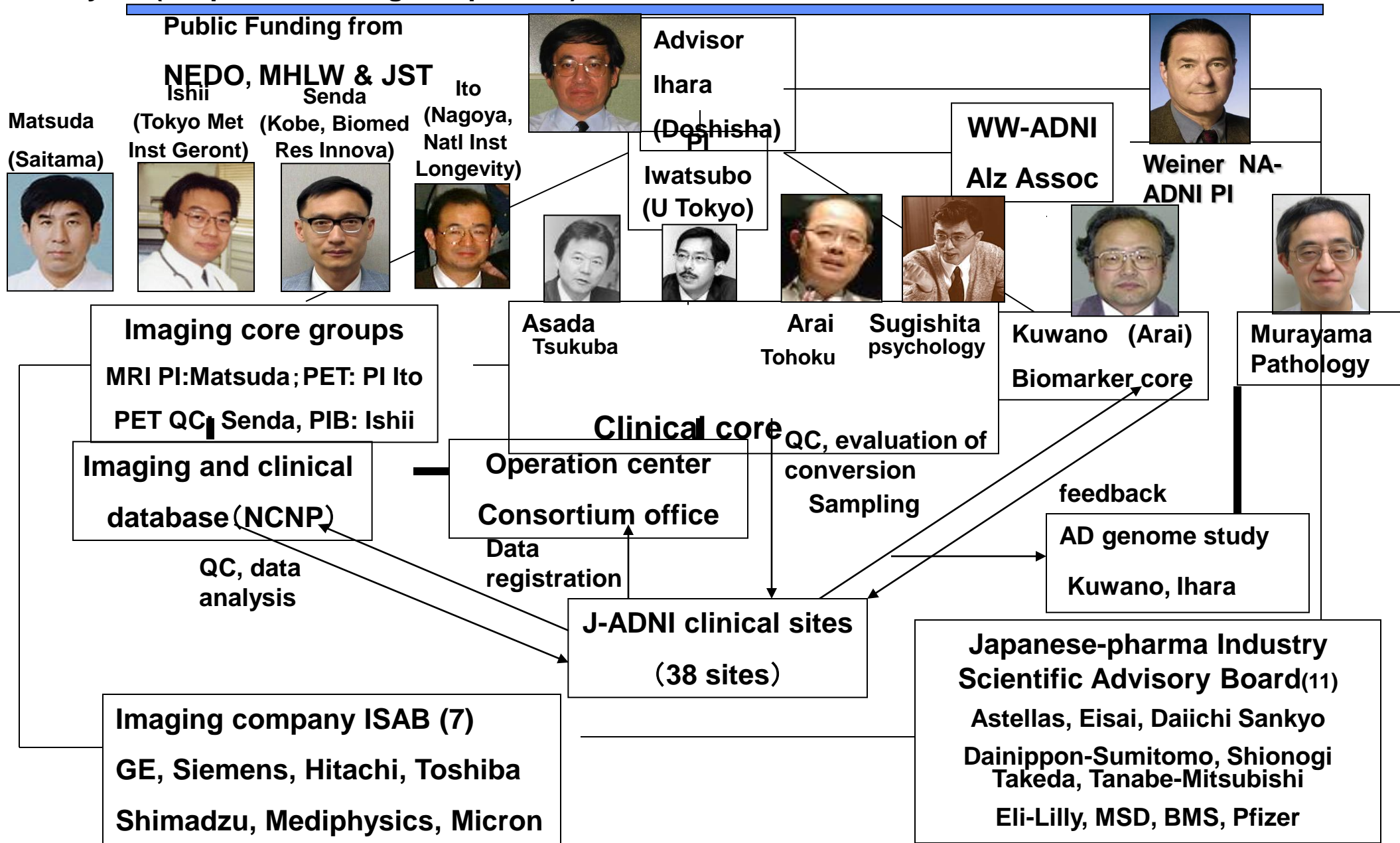
subjects	N (recruited)	follow up
early AD	150 (150)	2 yr
MCI	300 (239)	3 yr
NC	150(154)	3 yr



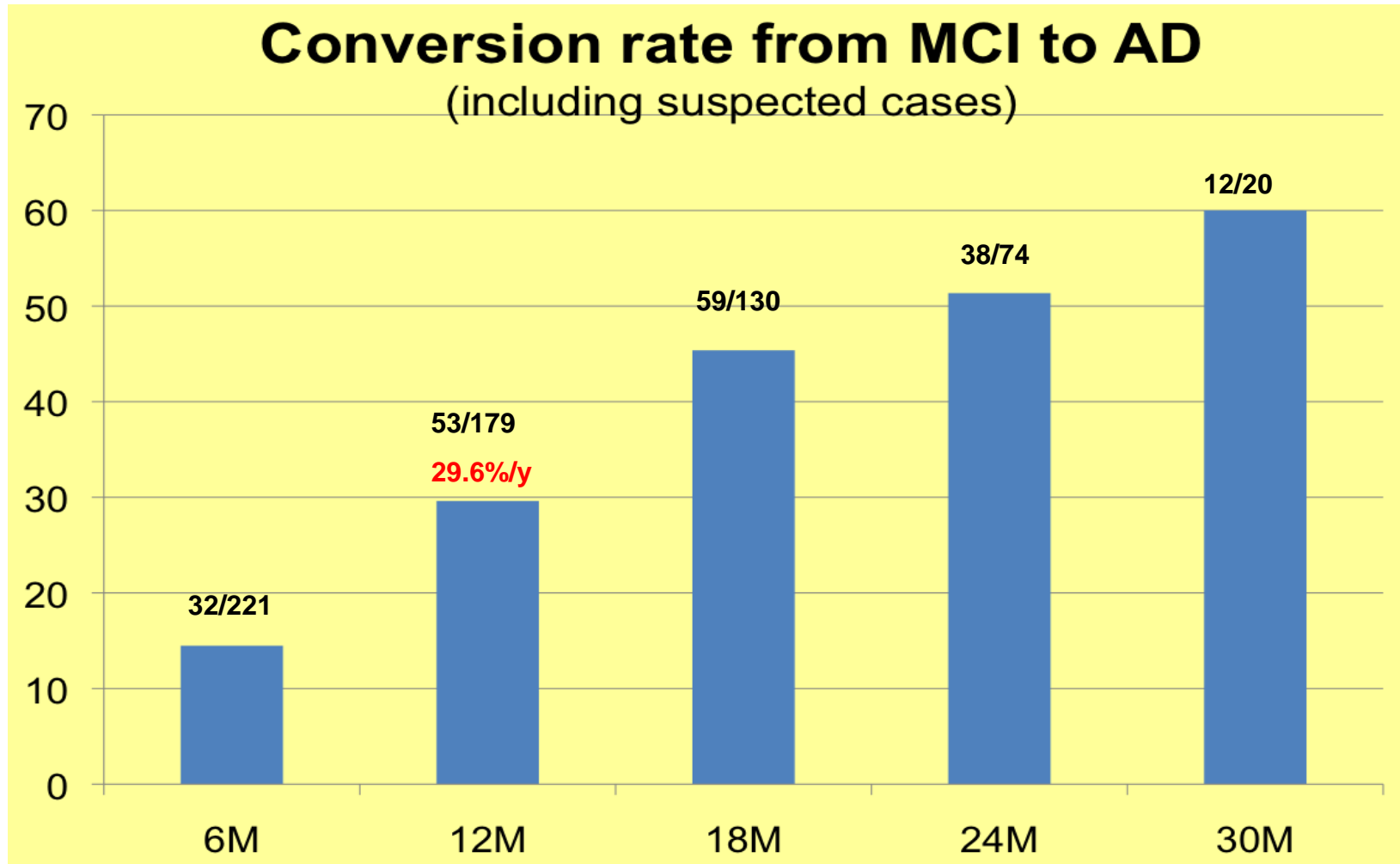
Alzheimer's Disease Neuroimaging Initiative

Organization of J-ADNI

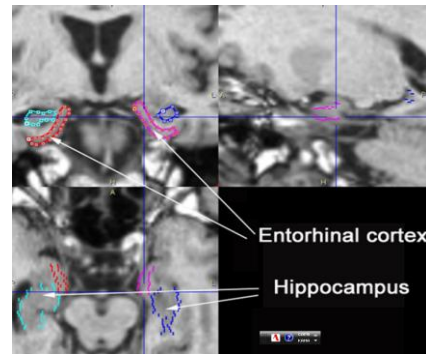
6M USD/year (2/3 public funding, 1/3 pharma)



Clinical assessments in J-ADNI (Asada, Arai et al. Clinical Core)



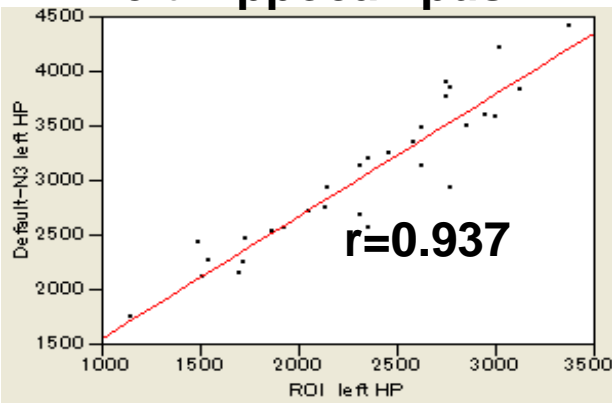
Volumetric analysis by MRI (Matsuda et al. MRI core)



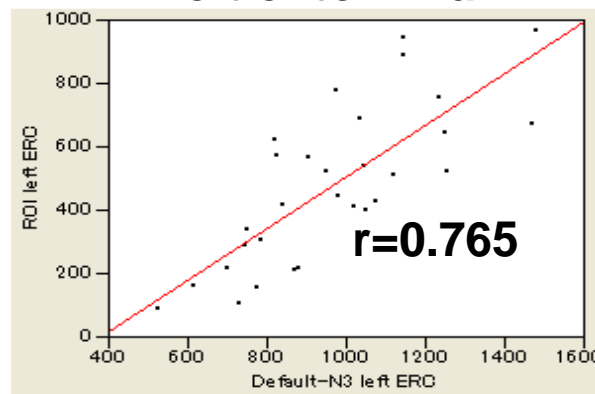
Manual segmentation

Group	Left Hippocampus		
	screening	12mo later	Atrophy rate % /y
HC	3.74±0.46 (2.50±0.31)	3.71±0.46 (2.48±0.32)	0.7± 4.2
MCI-NC	3.12±0.55 (2.11±0.37)	3.04±0.61 (2.05±0.39)	2.7± 4.8
MCI-C	2.83±0.48 (1.94±0.30)	2.69±0.47 (1.85±0.30)	4.8± 4.9
AD	2.60±0.45 (1.88±0.38)	2.45±0.45 (1.76±0.36)	5.7± 7.1

Left hippocampus



Left entorhinal

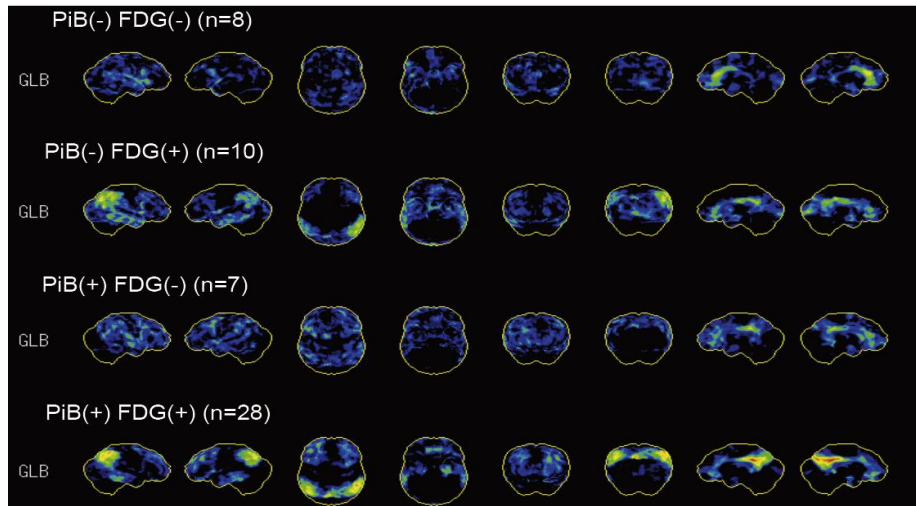


Progression of hippocampal atrophy in MCI converters and AD

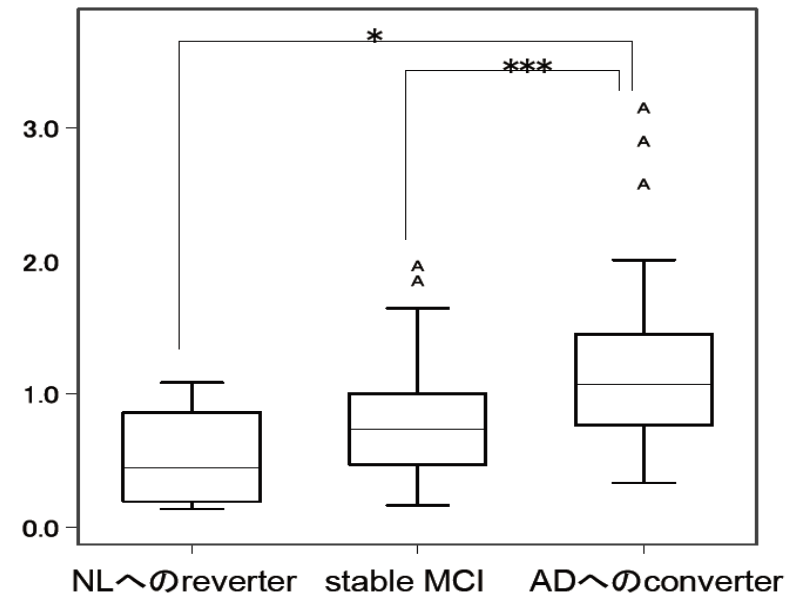
High correlation between hippocampal or entorhinal volumes measured manually or by freesurfer

12M longitudinal changes in FDG-PET analysis (Ito et al. PET core)

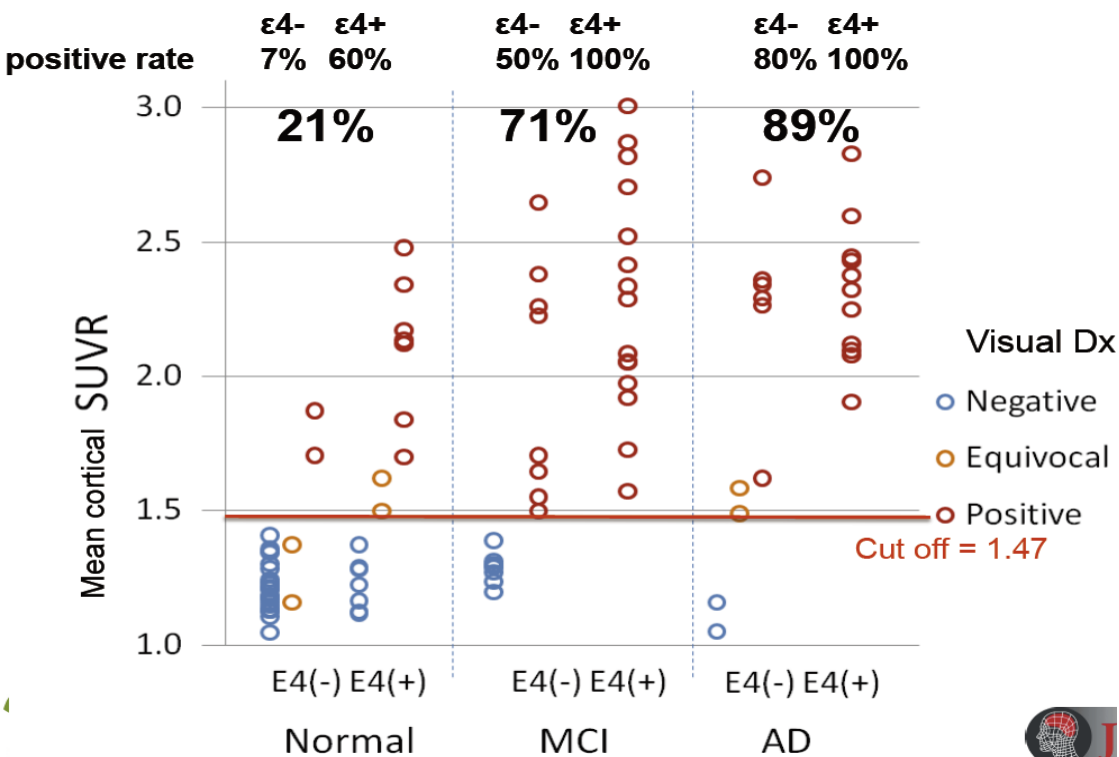
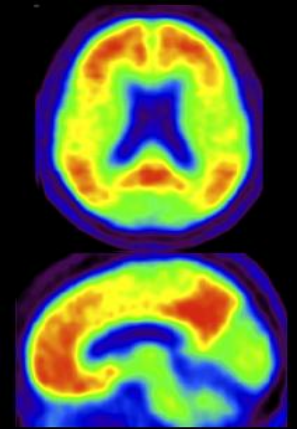
MCI群のFDG-PET所見



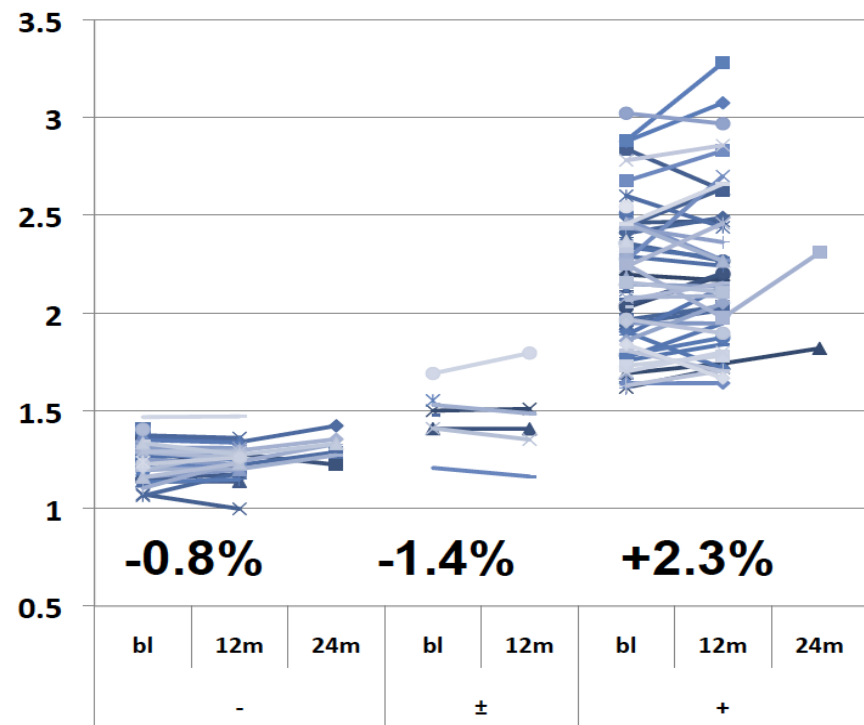
PET score



^{11}C -PiB Amyloid PET imaging (Ishii et al. amyloid PET core)



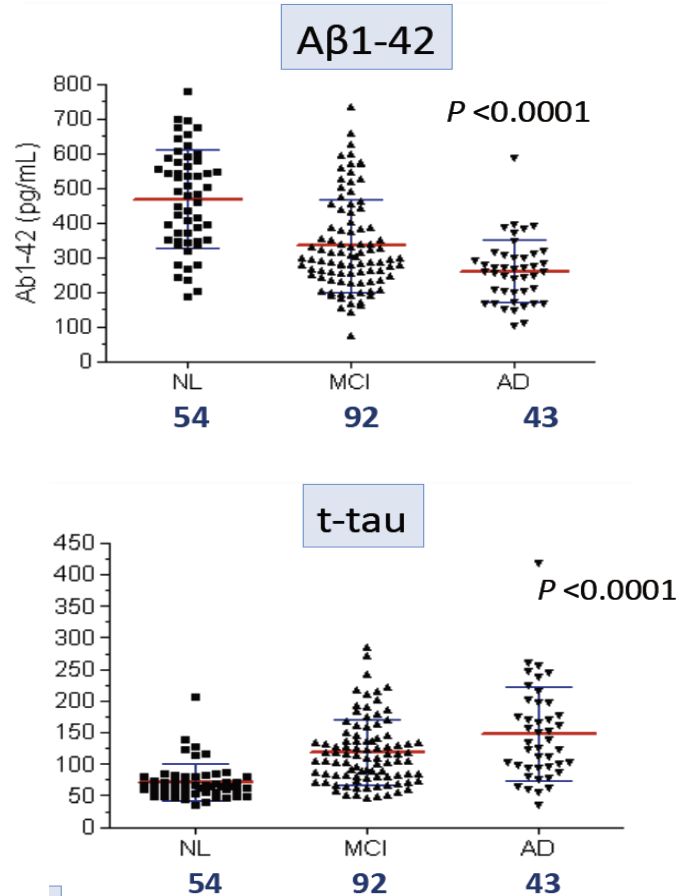
High PiB positivity rate in ε4 carriers



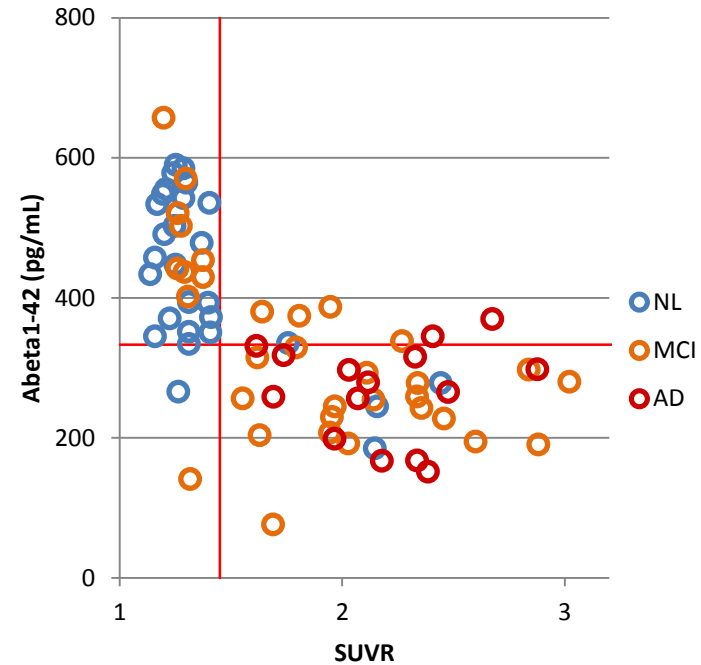
Longitudinal changes in amyloid burden by PET

CSF biomarker (Kuwano et al. Biochemistry core)

CSF A β , tau



Low A β (1-42) correlates well with high PIB



Future perspective of J-ADNI

J-ADNI1 to be completed by 2013-14

Co-analysis with NA/US-ADNI data to be facilitated, pending completion of QC/basic analysis of J-ADNI data

J-ADNI2 currently being negotiated with government, which will focus on MCI and preclinical AD

Setting the basis for clinical trials of DMTs in Japan!