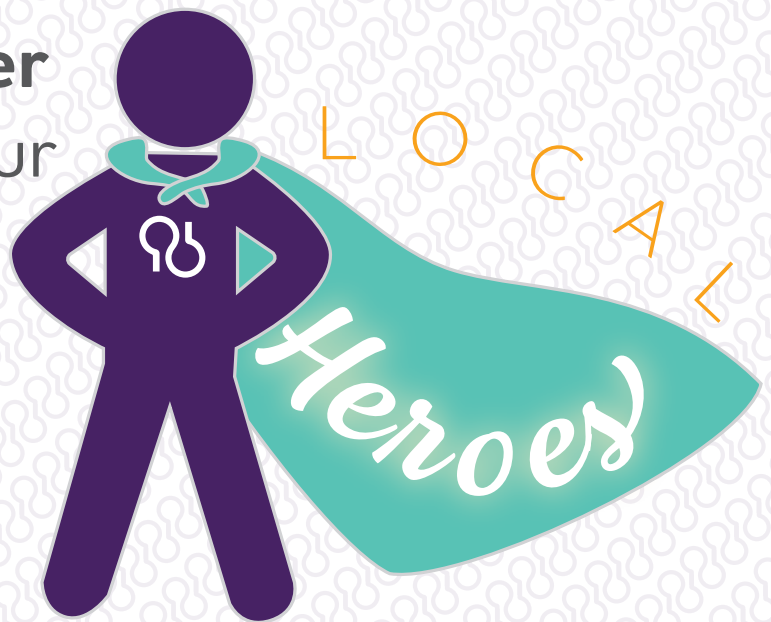


Alzheimer's Association Miami Valley Chapter wants to recognize our



Who is a Local Hero?

A Local Hero is a group of people in YOUR community who have provided support and assistance to the community, particularly during the Covid-19 crisis.

This could be your local first responder, the night shift grocery baggers at Kroger, or maybe the people keeping the local food bank open.

A webpage is being developed where people will be able to nominate.

How do I nominate a Local Hero?

How can I be more involved?

Be a Community Influencer! Use YOUR social media presence to spread the word about this campaign. Posts will be made frequently on all our social media platforms, including the chapter Facebook page (Alzheimer's Association: Miami Valley Chapter) - please like, share, and comment on these posts and encourage people to visit the webpage.

**Interested in
learning more?**
Contact Meg Rose at
msrose@alz.org for
more information!