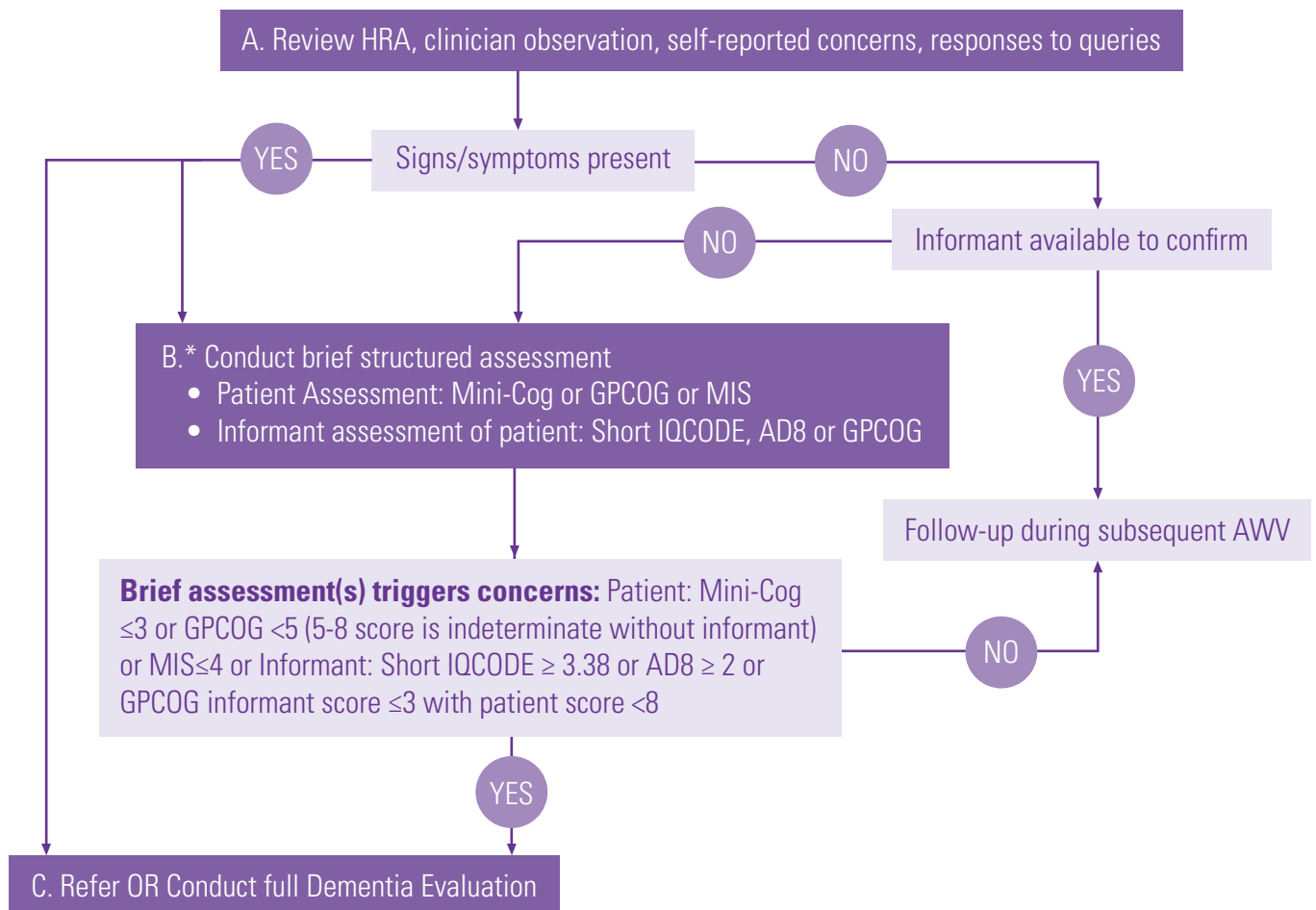


ALZHEIMER'S ASSOCIATION®

Medicare Annual Wellness Visit Algorithm for Assessment of Cognition



* No one tool is recognized as the best brief assessment to determine if a full dementia evaluation is needed. Some providers repeat patient assessment with an alternate tool (e.g., SLUMS, or MoCA) to confirm initial findings before referral or initiation of full dementia evaluation.

AD8 = Eight-item Informant Interview to Differentiate Aging and Dementia; **AWV** = Annual Wellness Visit; **GPCOG** = General Practitioner Assessment of Cognition; **HRA** = Health Risk Assessment; **MIS** = Memory Impairment Screen; **MMSE** = Mini Mental Status Exam; **MoCA** = Montreal Cognitive Assessment; **SLUMS** = St. Louis University Mental Status Exam; **Short IQCODE** = Short Informant Questionnaire on Cognitive Decline in the Elderly

Cordell CB, Borson S, Boustani M, Chodosh J, Reuben D, Verghese J, et al. Alzheimer's Association recommendations for operationalizing the detection of cognitive impairment during the Medicare Annual Wellness Visit in a primary care setting. *Alzheimers Dement*. 2013;9(2):141-150. Available at <http://download.journals.elsevierhealth.com/pdfs/journals/1552-5260/PIIS1552526012025010.pdf>.

The Alzheimer's Association works on a global, national and local level to enhance care and support for all those affected by Alzheimer's disease and other dementias. Our services include:

- Professionally staffed 24/7 Helpline offering information, advice and referrals in more than 170 languages and dialects – **800.272.3900**
- Disease information and education programs – **alz.org**
- Health Care Professionals and Alzheimer's Center featuring patient, caregiver and health care provider resources – **alz.org/hcps**
- Alzheimer's and Dementia Caregiver Center featuring reliable information and helpful tools – **alz.org/care**
- Online connections and support through ALZConnected® – **alzconnected.org**
- Comprehensive database of local programs and services, housing and care services, and legal experts through our Community Resource Finder – **alz.org/crf**
- Customized action plans of resources and support based on patient needs through Alzheimer's Navigator® – **alz.org/alzheimersnavigator**
- Safety Center featuring information and tips for safety inside and outside of the home – **alz.org/safety**
- Dementia and Driving Resource Center – **alz.org/driving**
- Clinical study matching with TrialMatch® – **alz.org/trialmatch**
- Staff, programs and support groups in communities nationwide – **alz.org/findus**