



GBSC Meeting Copenhagen – July 12th 2014

Diagnostic Assays for Alzheimer's Disease Biomarkers

Tobias Bittner, Roche Diagnostics



The following presentation will discuss products that are not FDA cleared/approved yet.



Agenda

- **Roche Diagnostics**
- **Roche AD Biomarker Development Program**
- **Analytical Performance Aβ42**
- **Preliminary Analytical Performance tTau**
- **Preliminary Analytical Performance pTau181**

Roche Group

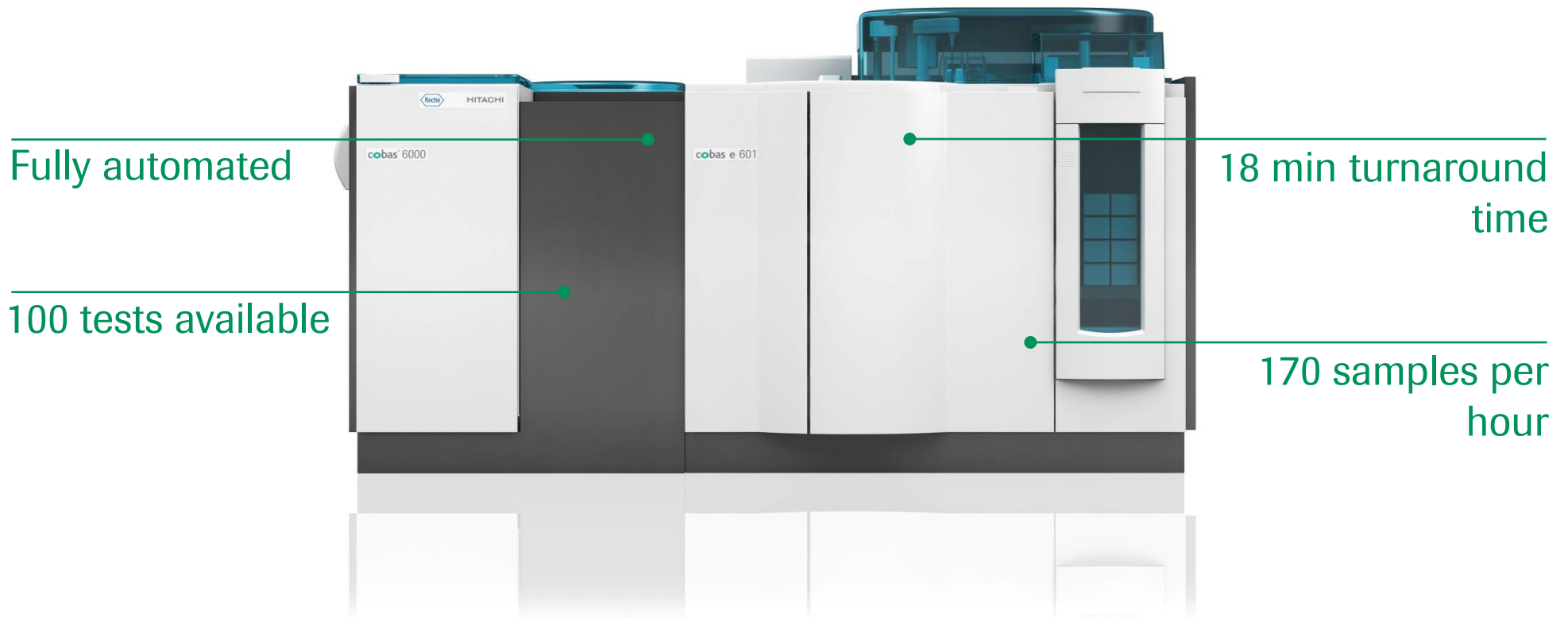


Roche Pharma	Genentech	Chugai

Roche Molecular Diagnostics	Roche Professional Diagnostics	Roche Tissue Diagnostics	Roche Diabetes Care



Diagnostic platform cobas e 601



Fully automated

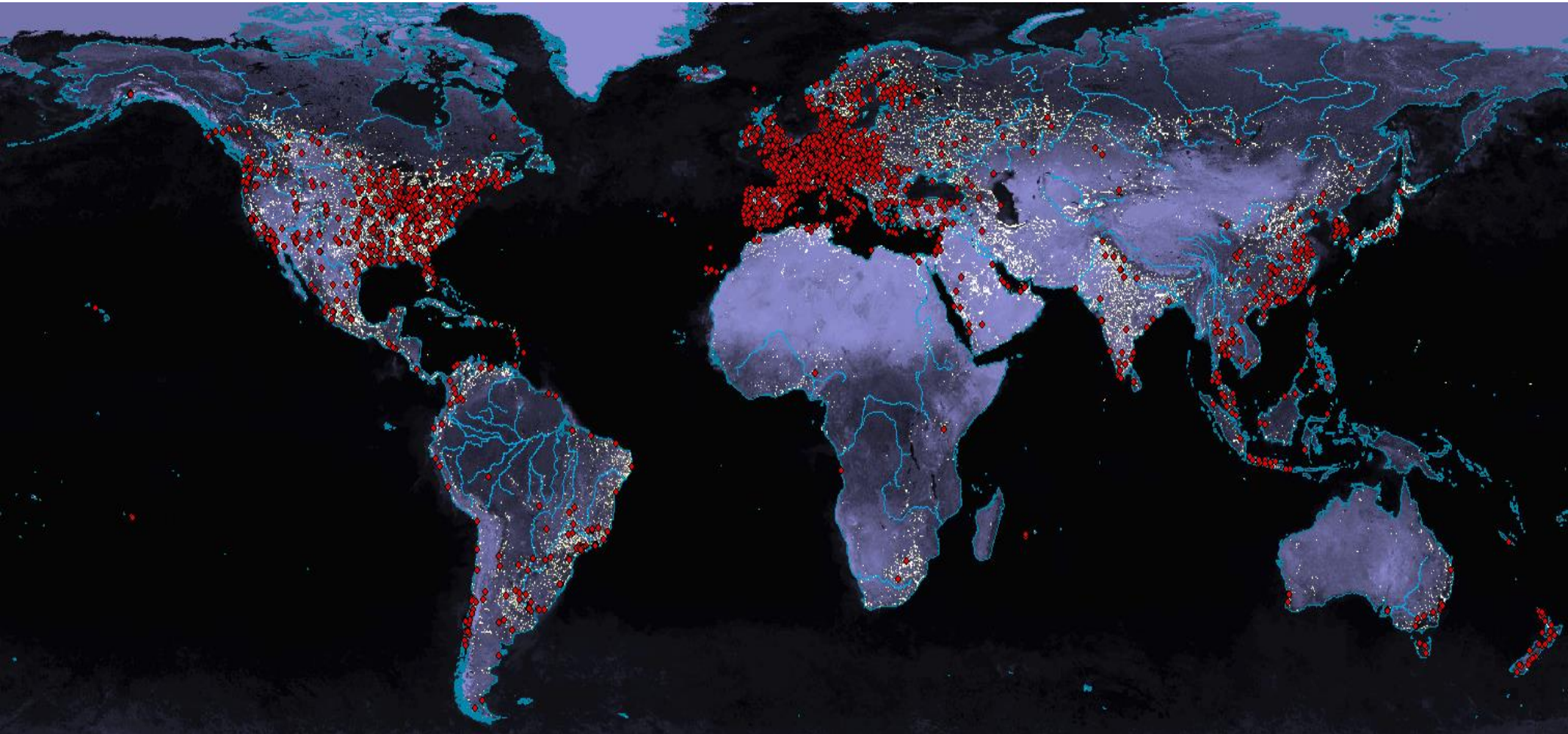
100 tests available

18 min turnaround
time

170 samples per
hour

cobas platform

>30,000 placements worldwide



Roche AD Biomarker Development Program

Goals

CSF Abeta42, tTau, and pTau assays (no multiplexing)

- Enable patient selection for treatment with gantenerumab
- Exploring ways to develop stand-alone diagnostic assays

General Features

Abeta42, tTau, pTau assays

General features	
Assays	Individual Abeta42, tTau, pTau181 (no multiplexing)
Assay format	Sandwich
Sample volume	50 µl per determination
Turn around time	18 min
Degree of automation	fully automated
Platform	cobas e 601
Launchplan	worldwide

Thank you for your attention.

Roche Diagnostics Ltd.
6343 Rotkreuz
Switzerland

COBAS, COBAS E and LIFE NEEDS
ANSWERS are trademarks of Roche

This presentation is our intellectual property. Without our written consent, it shall neither be copied in any manner, nor used for manufacturing, nor communicated to third parties.

