



GBSC Meeting Boston – July 13th 2013

Diagnostic Assays for Alzheimer's Disease Biomarkers

Tobias Bittner, Roche Diagnostics



The following presentation will discuss products that are not FDA cleared/approved yet.



Agenda

- **Roche Diagnostics**
- **AD Biomarker Development Program**
- **Preliminary Analytical Performance Abeta42**

Roche Group



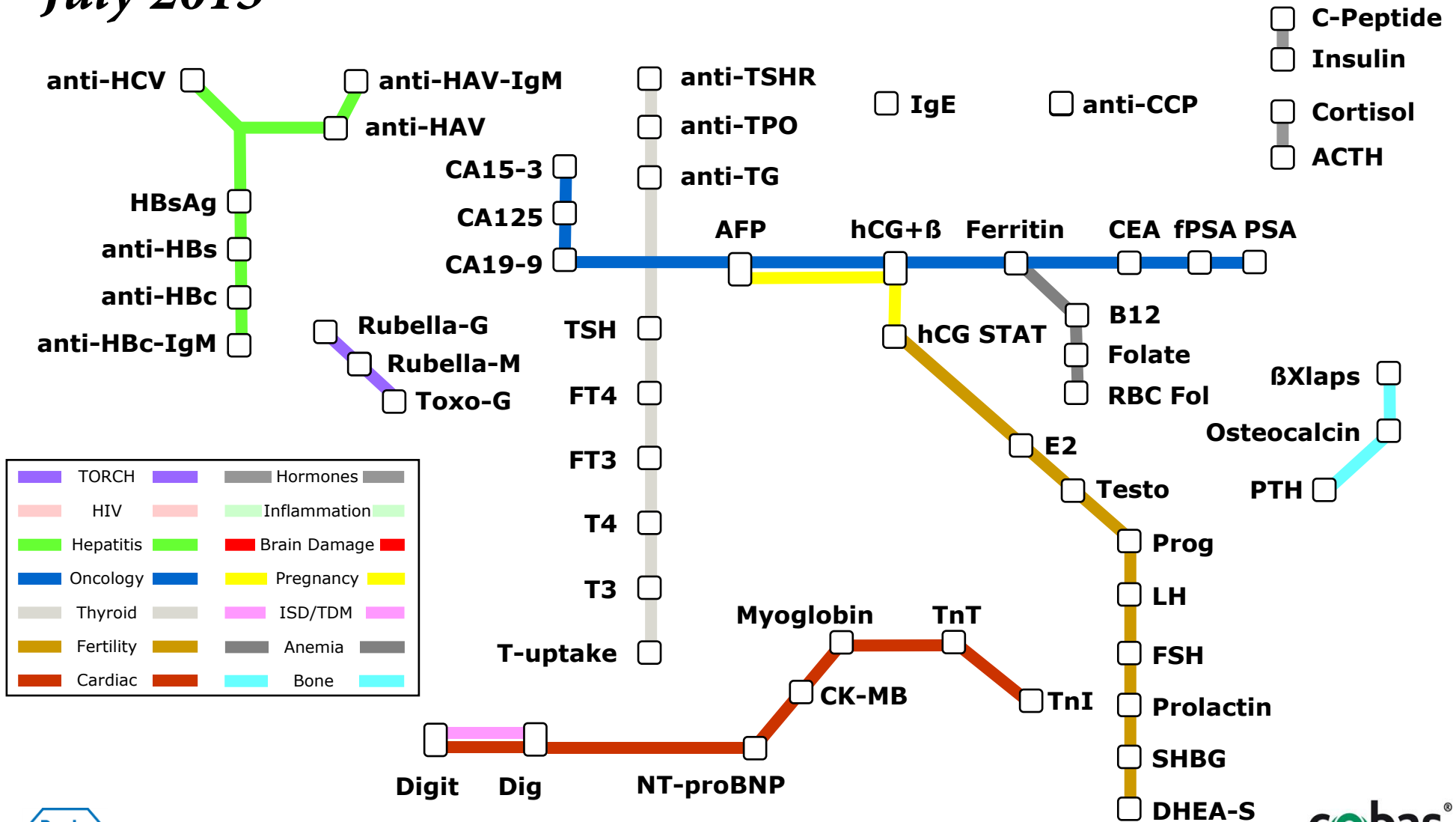
Roche Pharma 	Genentech <i>A Member of the Roche Group</i> 	Chugai  
		

Roche Applied Science 	Roche Molecular Diagnostics 	Roche Professional Diagnostics 	Roche Tissue Diagnostics   <i>A Member of the Roche Group</i>	Roche Diabetes Care 
---	--	---	--	--



Immunoassay Menu in US

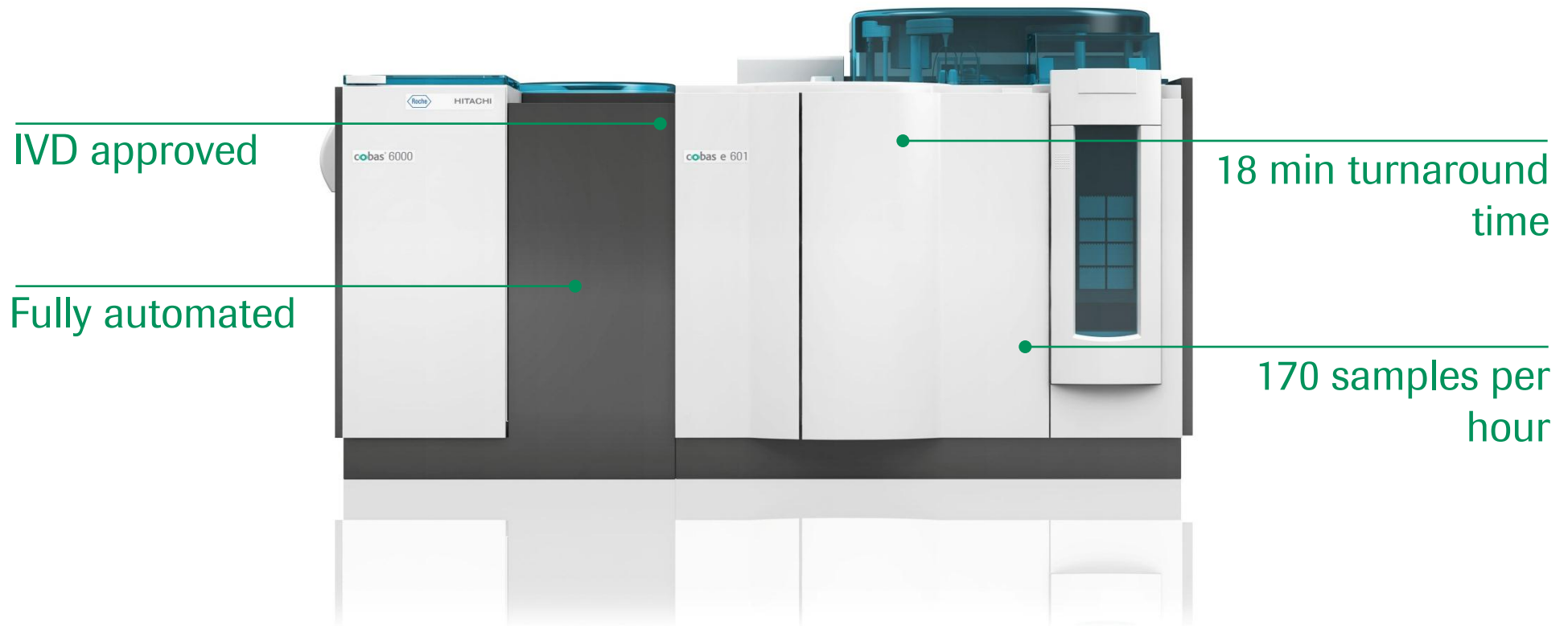
July 2013



worldwide 35 immunoassays run per second

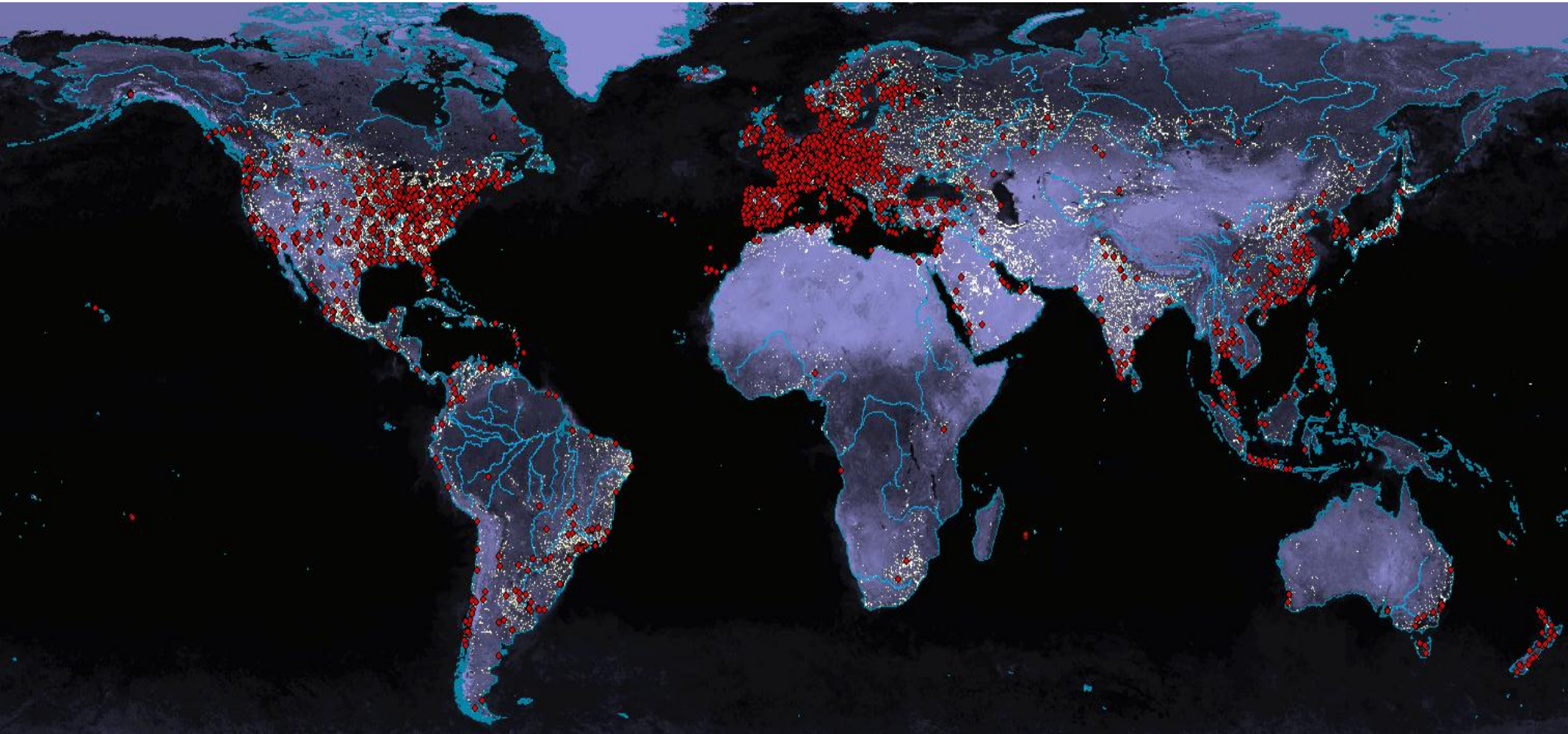


Diagnostic platform cobas® e 601



cobas[®] platform

>25,000 placements worldwide



AD Biomarker Development Program

Goals

CSF Abeta42, tTau, and pTau assays

- Enable patient selection for treatment with gantenerumab
- Exploring ways to develop stand-alone diagnostic assays for early AD

AD Biomarker Development Program

Assay characteristics

- individual assays for Abeta42, tTau, and pTau (no multiplexing)
- sandwich assay format
- sample volume 50µl per analyte per determination
- fully automated
- 18 minutes turnaround time
- worldwide launch planned on cobas[®] e 601 platform
- reference standardization by LC-MS (for Abeta42)

Thank you for your attention.

Roche Diagnostics Ltd.
6343 Rotkreuz
Switzerland

COBAS and LIFE NEEDS ANSWERS are
trademarks of Roche

This presentation is our intellectual property. Without our written consent, it shall neither be copied in any manner, nor used for manufacturing, nor communicated to third parties.

