



GBSC Meeting Vancouver – July 14<sup>th</sup> 2012

## **Diagnostic Assays for Alzheimer's Disease Biomarkers**

*Tobias Bittner, Roche Diagnostics*



The following presentation will discuss products that are not FDA cleared/approved yet.



# Agenda

- **Roche Diagnostics**
- **AD Biomarker Development Program**
- **Preliminary Analytical Performance**

# Roche Group



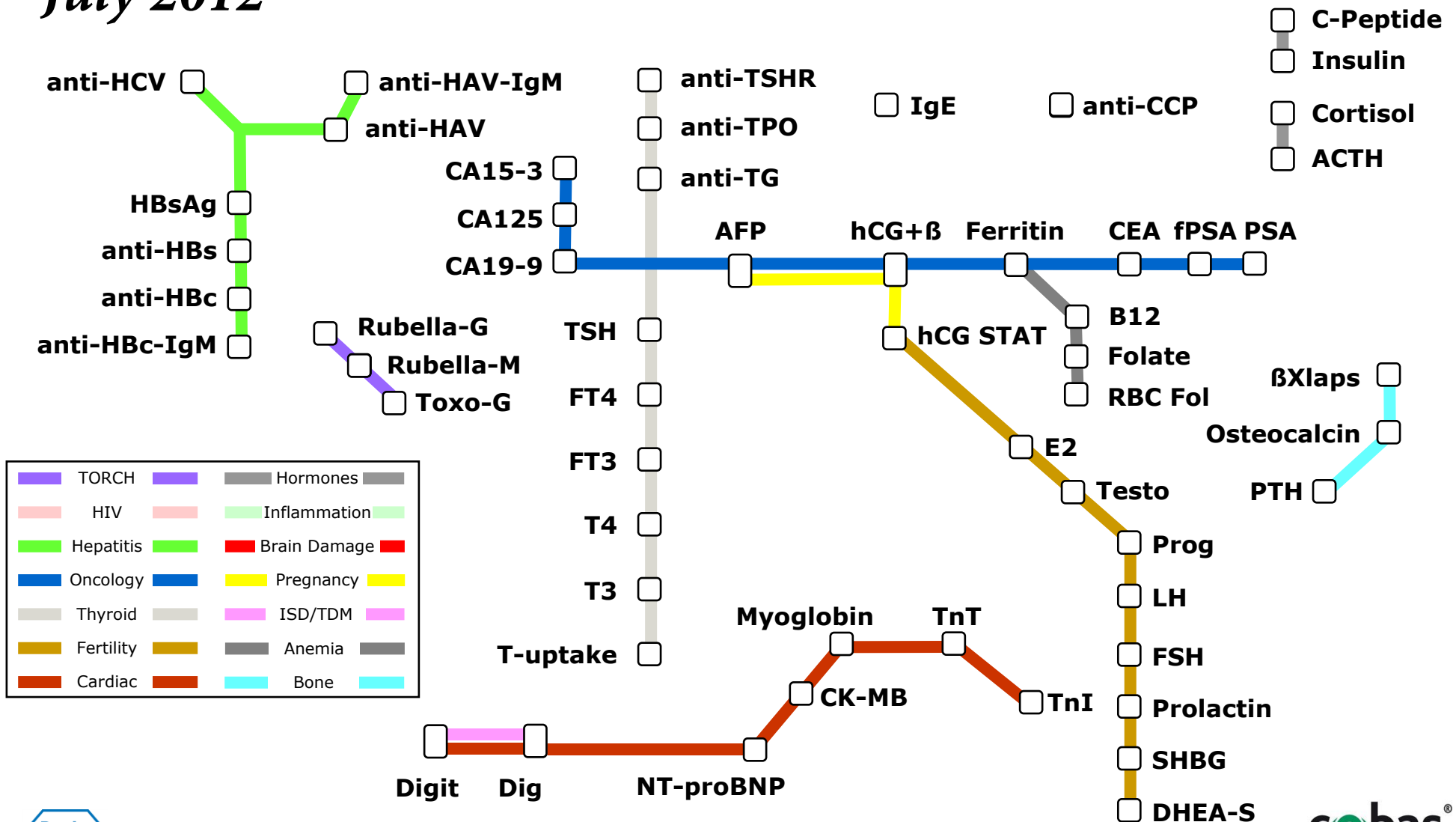
<b>Roche Pharma</b>	<b>Genentech</b>	<b>Chugai</b>
	 <i>A Member of the Roche Group</i>	 
		

<b>Roche Applied Science</b>	<b>Roche Molecular Diagnostics</b>	<b>Roche Professional Diagnostics</b>	<b>Roche Tissue Diagnostics</b>	<b>Roche Diabetes Care</b>
			 <i>A Member of the Roche Group</i>	
				



# Immunoassay Menu in US

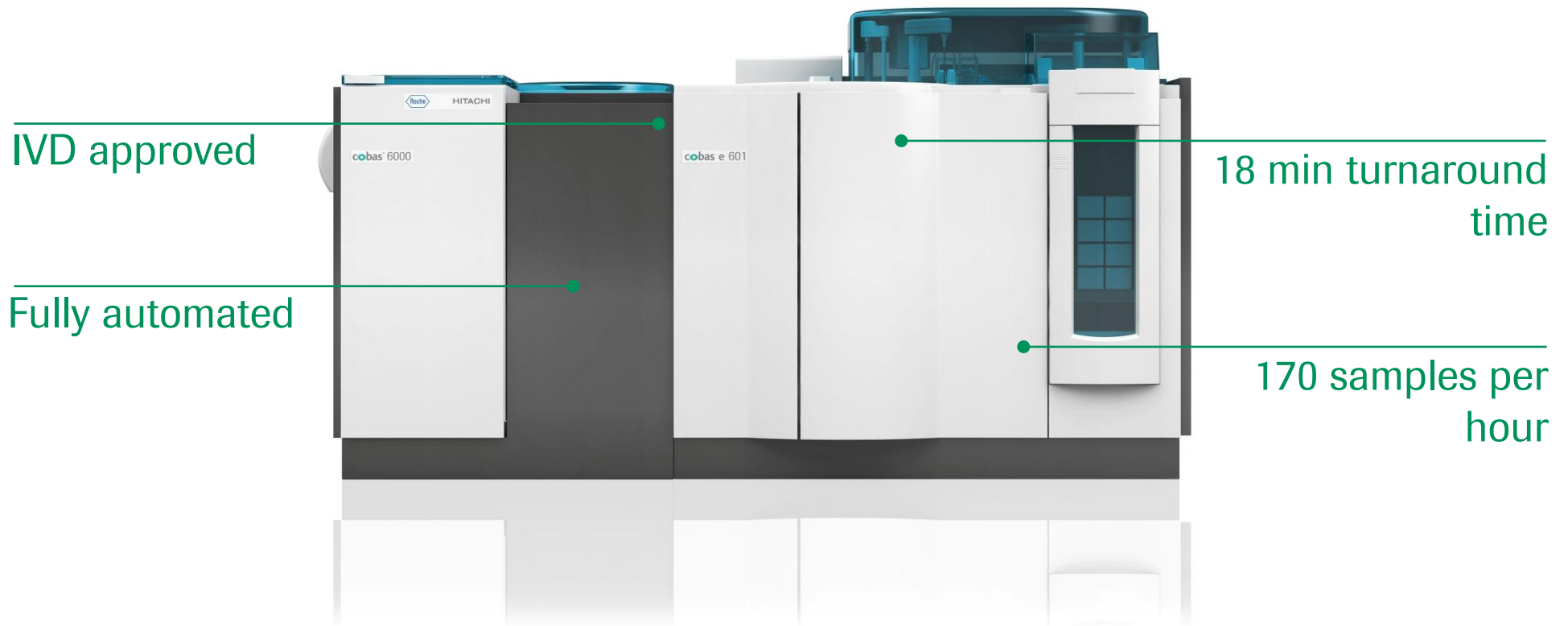
## July 2012



**worldwide 35 immunoassays run per second**

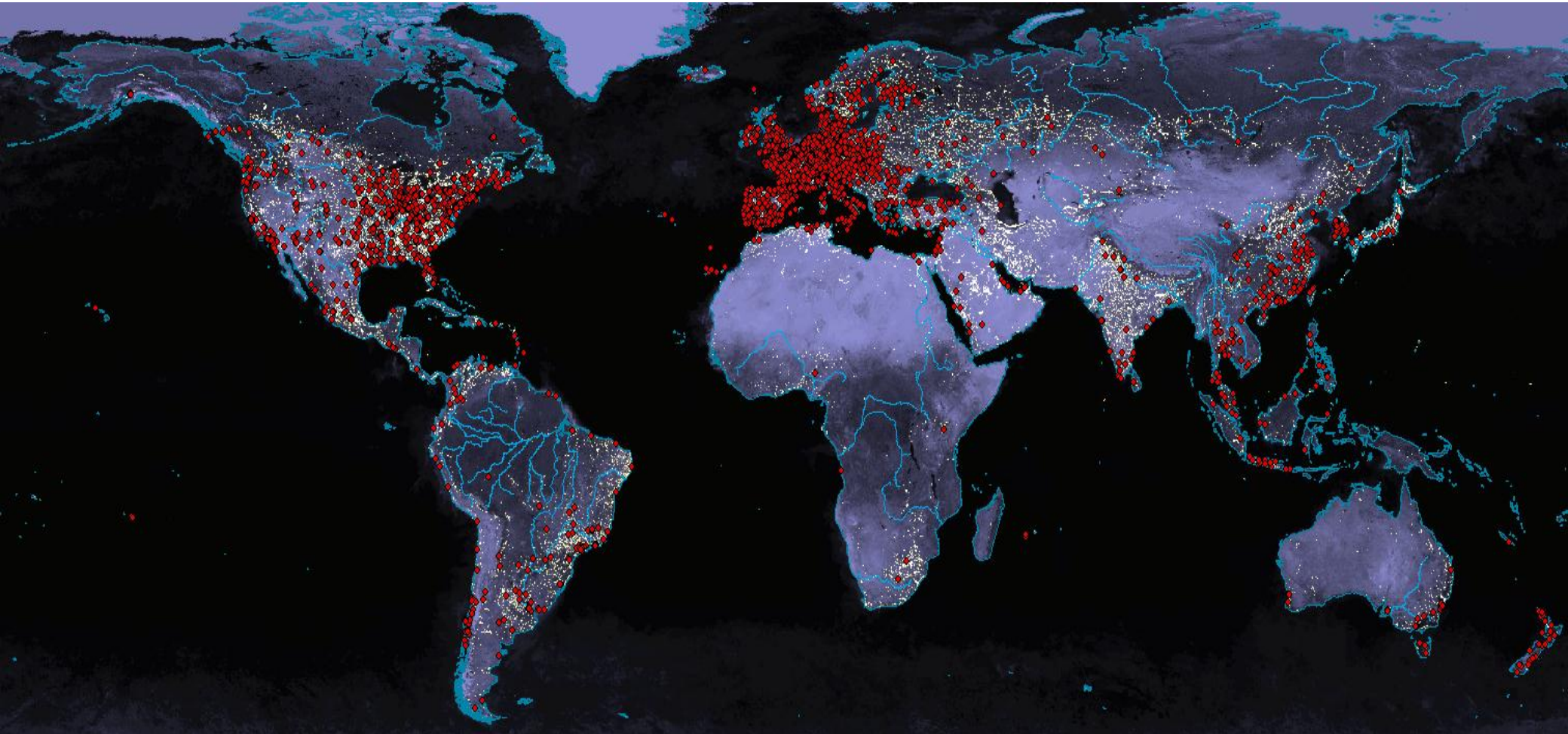


# Diagnostic platform cobas e 601



**cobas<sup>®</sup> platform**

*>25,000 placements worldwide*



# AD Biomarker Development Program

## *Goals*

### CSF Abeta42 and Tau assays

- Enable prodromal AD patient selection for treatment with gantenerumab
- Exploring ways to develop a stand-alone diagnostic assay for early AD

# AD Biomarker Development Program

## *Assay characteristics*

- individual assays for Abeta42 and Tau (no multiplexing)
- sandwich assay format
- sample volume <50µl
- fully automated
- 18 minutes turnaround time
- worldwide launch planned
- reference standardization by LC-MS (for Abeta42)



# Thank you for your attention.

Roche Diagnostics Ltd.  
6343 Rotkreuz  
Switzerland

COBAS and LIFE NEEDS ANSWERS are  
trademarks of Roche

*This presentation is our intellectual property. Without our written consent, it shall neither be copied in any manner, nor used for manufacturing, nor communicated to third parties.*

