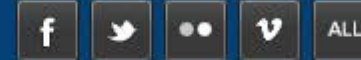


CAREGIVING in context





The Maryland Commission on Caregiving

[Caring for the Caregiver](#)[Meeting Dates](#)[Members of the Commission](#)[Report](#)[Resources](#)[Training Resources For Caregivers](#)[Contact Us](#)

Maryland Commission on Caregiving

About Us

The Commission is comprised of 19 commissioners including a legislator from the House of Delegates and one from the state Senate. In addition, three commissioners are appointed as family caregivers to ensure that the "Voice of the Caregiver" is fully represented.

The Commission's Legislative Mandates are to:

1. Solicit and gather concerns of caregivers
2. Develop and distribute to interested parties a handbook of current respite care and other family

DHS General Information

Find It Fast

- ▶ [Child Support Administration](#)
- ▶ [Food Supplement Program](#)
- ▶ [Reporting Suspected Child Abuse or Neglect](#)
- ▶ [Energy Assistance](#)
- ▶ [Medical Assistance](#)
- ▶ [Careers](#)



The Maryland Commission on Caregiving

[Caring for the Caregiver](#)

[Meeting Dates](#)

[Members of the Commission](#)

[Report](#)

[Resources](#)

[Training Resources For Caregivers](#)

[Contact Us](#)

Training Resources For Caregivers

[Adults With Disabilities](#)

[Alcohol, Substance And Rx Abuse](#)

[Behavioral And Mental Health](#)

[Benefits, Legal, Caregiving](#)

[Children, Adolescent And Young Adult](#)

[Family Caregiving](#)

[Disease Specific Caregiving](#)

[Medication Management](#)

[Military And Veteran](#)

[Nutrition](#)

[Older Adult](#)

[Respite](#)

DHS General Information

Find It Fast

- ▶ [Child Support Administration](#)
- ▶ [Food Supplement Program](#)
- ▶ [Reporting Suspected Child Abuse or Neglect](#)
- ▶ [Energy Assistance](#)
- ▶ [Medical Assistance](#)

Montgomery County Government Resources for Older Adults & Caregivers

Montgomery County's Aging and Disability Services
Phone number: 240-777-3000

Resources that could be discussed with callers include (but are not limited to):

- long term care planning
- adult day care
- home health care
- transportation options
- File of Life
- senior centers and recreation
- respite
- nutrition
- mental health options
- Adult Protective Services

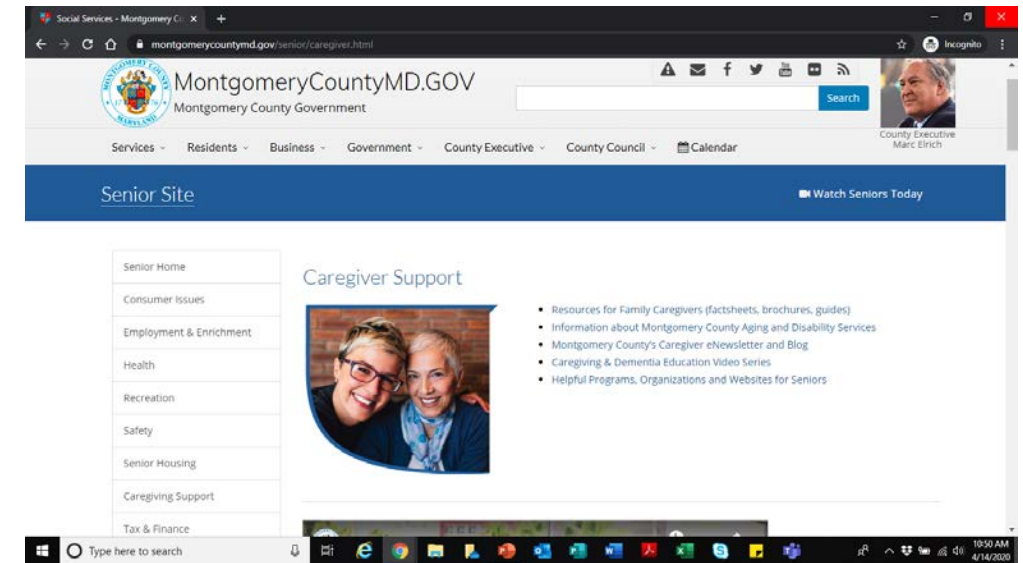
Access to bilingual ADRU staff and County's Interpretation and Language Service available

MONTGOMERY COUNTY'S ONLINE CAREGIVER SUPPORTS

Montgomery County's Caregiver Webpage

The County's Caregiver webpage is an excellent starting place to access all online supports

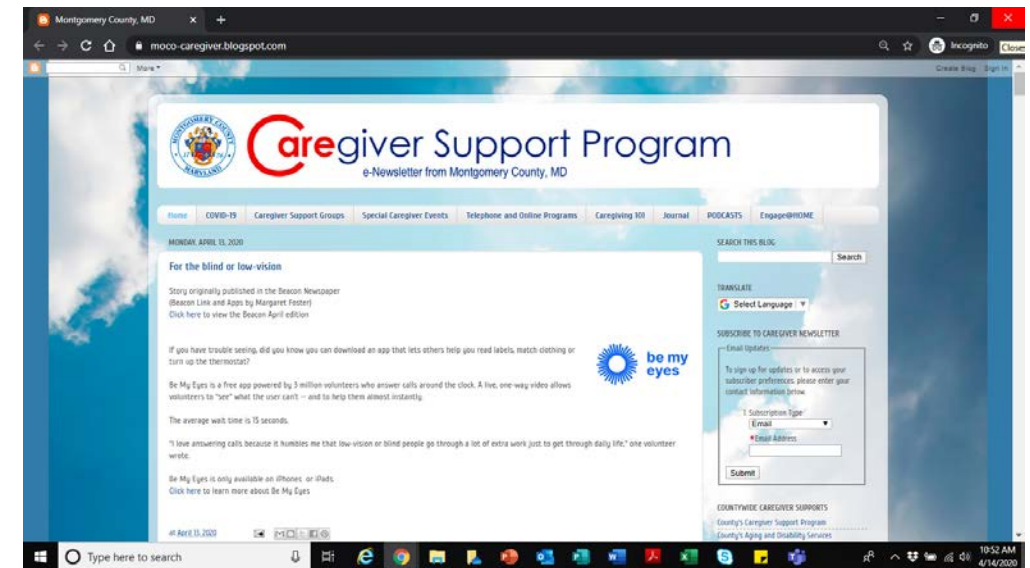
<https://www.montgomerycountymd.gov/senior/caregiver.html>



Montgomery County's Caregiver eNewsletter / Blog / Engage@HOME

The County's Caregiver virtual communications can also stay up to date with countywide programs hosted by the County and our trusted partners.

<https://moco-caregiver.blogspot.com/>





Montgomery County MD Caregiver Support Program

CUSTOMIZE CHANNEL

YOUTUBE STUDIO

HOME

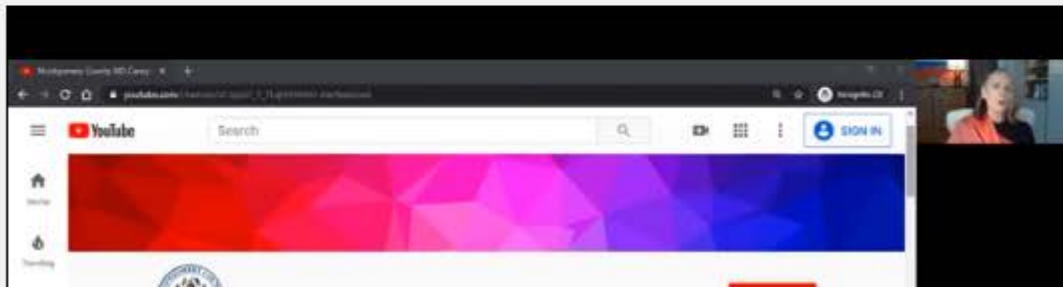
VIDEOS

PLAYLISTS

CHANNELS

DISCUSSION

ABOUT



Engage@HOME - Welcome and join me for a brief orientation

76 views • 1 week ago

Engage@HOME is a new opportunity to stay engaged and connect online plus by telephone. Rather than disconnect at